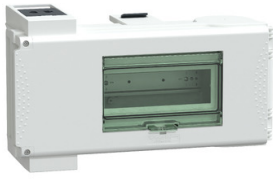


Product datasheet

Specifications



Tap off unit, Canalis KS 100A to 1000A, 5 modules of 18mm, 63A, DIN rail, 3L+PEN, IP55, RAL9001

KSB63SM58

Main

Range of product	Canalis
Range compatibility	Canalis KS busbar trunking Canalis KT busbar trunking
Product or component type	Tap-off unit
busbar trunking compatibility	Canalis KS busbar trunking plug-in Canalis KT busbar trunking with KS type plug-in
[Ie] rated operational current	63 A
Protection type	Circuit breaker: miniature circuit breaker (MCB)
Mounting mode	Plug-in with fixed polarity
Tap-off unit polarity	3L+PEN
Colour	White (RAL 9001)

Complementary

Device application	Medium power distribution
Provided equipment	circuit-breaker to be ordered separately
[Ue] rated operational voltage	230...690 V depending on protective device
[Uimp] rated impulse withstand voltage	6.8 kV
[Ui] rated insulation voltage	400 V depending on protective device 500 V depending on protective device 690 V depending on protective device
Network frequency	50/60 Hz
Electrical connection	Lugs - ISO63 16 mm ² flexible Lugs - ISO63 16 mm ² rigid
door/cover opening side	Right
Tap-off unit disconnection mode	By opening the door
Standards	IEC 61439-6 IEC 61439-1
Body material	Plastic
18 mm pitches	8
Width	444 mm
Depth	133 mm
depth (door open)	432.5 mm
Height	220 mm
Product weight	2.4 kg

Disclaimer: This documentation is not intended as a substitute for and is not to be used for determining suitability or reliability of these products for specific user applications

Environment

Earthing system	TN-C
IP degree of protection	IP55 conforming to IEC 60529
IK degree of protection	IK08 conforming to IEC 62262

Packing Units

Unit Type of Package 1	PCE
Number of Units in Package 1	1
Package 1 Height	16.000 cm
Package 1 Width	20.300 cm
Package 1 Length	35.700 cm
Package 1 Weight	1.980 kg
Unit Type of Package 2	P12
Number of Units in Package 2	38
Package 2 Height	195.000 cm
Package 2 Width	80.000 cm
Package 2 Length	120.000 cm
Package 2 Weight	100.340 kg

Contractual warranty

Warranty (in months)	18
----------------------	----



Environmental Data

Schneider Electric aims to achieve Net Zero status by 2050 through supply chain partnerships, lower impact materials, and circularity via our ongoing “Use Better, Use Longer, Use Again” campaign to extend product lifetimes and recyclability.

[Environmental Data explained >](#)

[How we assess product sustainability >](#)



Environmental footprint

[Environmental Disclosure](#)

[Product Environmental Profile](#)

Use Better



Materials and Substances

Packaging made with recycled cardboard	Yes
Packaging without single use plastic	Yes
SCIP Number	Cb1a2eb4-9b7e-4708-8b1b-be81799688d2
EU RoHS Directive	Compliant By Exemption
REACH Regulation	Reference contains Substances of Very High Concern above the threshold
Halogen-free status	Halogen free product
PVC free	Yes
Silicone-free	Yes

Use Longer



Lifetime extension

Repair	No
--------	----

Use Again



Repack and remanufacture

End of life manual availability	No need of specific recycling operations
Take-back	No
WEEE Label	 The product must be disposed on European Union markets following specific waste collection and never end up in rubbish bins