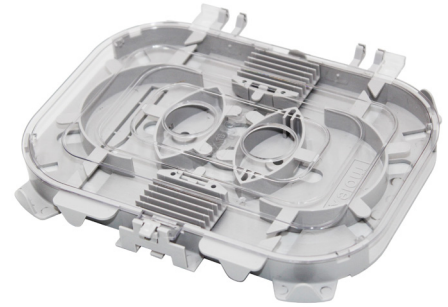


24 Fiber Universal Splice Tray with Integrated Fiber Management >

The 24 Fiber Splice Tray with Integrated Fiber Management and External Fiber Management and Pivotal Splice Holding Arrangements allows the installation of 24 optical fibers without the need to fit additional fiber management. This makes it ideal for fitting into small wall boxes and enclosures or for any installation requiring fiber. The tray is capable of holding up to 24 x 900µm fibers with heat shrink splice protectors.

The product comprises of 2 units with the capacity to hold 24 splices in each tray.



FEATURES AND ADVANTAGES

External fiber cable management allows for easy storage of excess fiber

Allows for multi-directional routing of entry and exit fibers, allowing the tray to be mounted vertically or horizontally

Maintains 30mm bend radius, ideal for 250µm or 900µm fiber

Internal cable management allows for multiple fiber routing options including cross over

Pivoting splice holders allow uninterrupted control of fiber during splicing

Built-in fiber pick can be used to withdraw individual fibers

Will hold up to 24 heat shrink style splice protectors

Tray is stackable with build-in hinge, which also allows for easy access

Tray comes with a transparent lid, fixed by hinge&latch,

Cable ties point to secure fiber on entry and exit

Mountable via center hole, DIN style holes or double sided foam adhesive pad

Compatible with Molex CES 1U/2U/4U 19" standard fiber enclosure

www.molexces.com/products/fiber/splicing/

24 Fiber Universal Splice Tray with Integrated Fiber Management

SPECIFICATIONS

Technical Information

Mechanical Characteristics:

Material: PC

Color:

Cover: Transparent

Base&protector holder: Gray

Fiber Termination Options: Direct, Fusion

Splice, Mechanical Splice,

Dimensions:

153mm W x 129mm D x 18mm H

Shipping Weight: 75g (1 Piece)

Warranty:

Please refer to our website at

<https://www.molexces.com/about-us/our-warranty/> for terms and conditions of any resulting warranty.

ORDERING INFORMATION

Order No.	SAP No.	Description
AFR-00822	180600705	Splice Tray Universal 2x24 Fiber with Integrated Fiber Management
AFR-00823	180600706	Splice Tray Universal 1x24 Fiber with Integrated Fiber Management

www.molexces.com/products/fiber/splicing/

Molex is a registered trademark of Molex, LLC in the United States of America and may be registered in other countries; all other trademarks listed herein belong to their respective owners. This information is correct at the time of publication, specifications are subject to change.

Order No. AFR-00822-823

SK/2025.04

©2025 Molex