

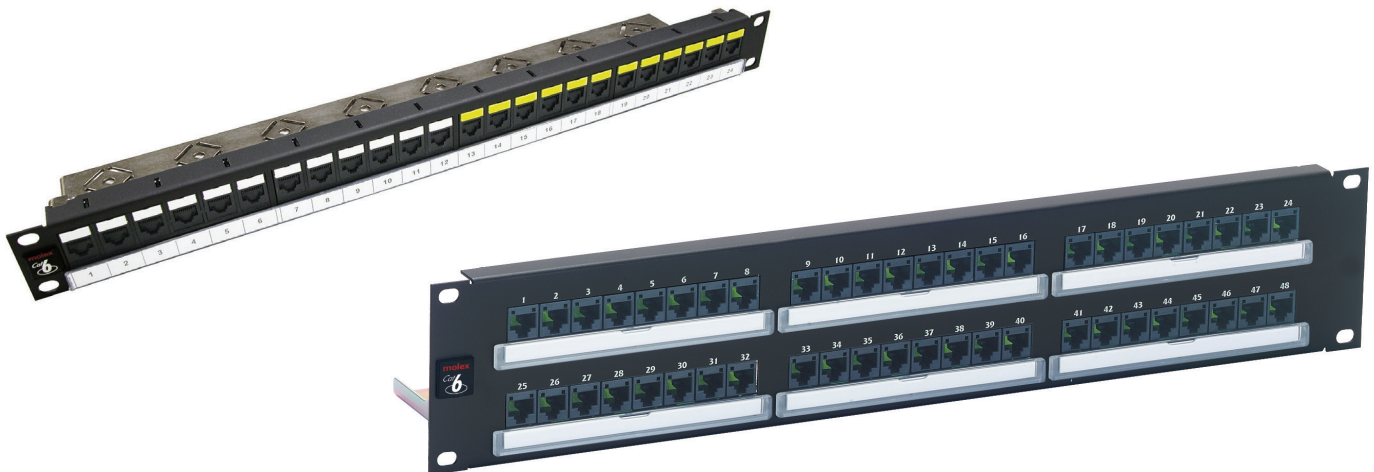
PowerCat 6 Patch Panels >

The PowerCat 6 Patch Panels are a key component of the PowerCat 6 end-to-end Solution.

Manufactured from sheet metal these panels are supplied with a robust rear cable management tray for cable strain relief and neat cable dressing. Port numbering is provided on the front and rear of the panel and individual ports may be color coded for site specific network administration.

The panel features the unique DataGate Category 6 connector which includes an integral ingenious spring-loaded shutter that not only protects it from dust and contaminants but it also ejects improperly seated patch cords. The DataGate connector is dual color coded for either 568A or 568B wiring and supports high-speed data transmission. The product is backwards compatible with C5e systems.

Molex recommends that the full range of PowerCat 6 products are used in a system to maximize cabling performance.



FEATURES AND ADVANTAGES

Available in 1U 24 Port (4X6 Ganged Jack) and 2U 48 Port (8X6 Ganged Jack) density

Robust rear cable management tray

Category 6 DataGate shuttered connector

Category 6 performance when installed as an end-to-end Category 6 system

Front and rear port labeling as well as panel identification label

RoHS compliant

www.molexc.es.com/products/copper/cat6/

Molex is a registered trademark of Molex, LLC in the United States of America and may be registered in other countries; all other trademarks listed herein belong to their respective owners. This information is correct at the time of publication, specifications are subject to change.

PowerCat 6 Patch Panels >

SPECIFICATIONS

Commercial Standards

ANSI/TIA-568.2-D-2018

ISO/IEC 11801-1:2017

FCC Subpart F68.5

UL Listed

Mechanical

Jack Connector

Plastic Housing: Polycarbonate, UL94V-0 rated or equivalent

Operating Life: Minimum 750 insertion cycles

Contact Material: Copper Alloy

Contact Plating: 1.27 micrometers Au/Ni

Contact Force: 100g minimum

Plug Retention Force: 15 lbs

IDC Connector

Plastic Housing: Polycarbonate, UL94V-0 rated or equivalent

Operating Life: Minimum 200 reterminations

Contact Material: Copper Alloy

IDC Contact Plating: Tin matte finish

Contact Force: 100g minimum

Wire Accommodation: 22-24 AWG solid

Patch Panel Characteristics

Material: CRS (cold rolled steel)

Thickness: 0.060" (1.52mm)

Coating: Black Powdercoat

Electrical

Interface Resistance: 20 mΩ

Initial Contact Resistance: 2.5 mΩ

Insulation Resistance: >100 mΩ

Physical

Dimensions:

24 Port with trays

44mm H x 483mm W x 98mm D

48 Port with trays

88mm H x 483mm W x 98mm D

Shipping Weight

24 Port: 1.2kg

48 Port: 2.2kg

PoE

Our PowerCat 6 system is suitable for PoE applications as defined below:

- IEEE 802.3bt from Type 1 to Type 4, and
CISCO UPoE+

Notes:

- For new installations of PoE Type 3 / Class 5 and above that wish to be eligible for the Molex 25 year Application Assurance Warranty, we require Category 6A cable to be used throughout.

- To confirm your PoE / RP3 cabling design is eligible for the Molex 25 year Application Assurance Warranty, your design must be verified and validated with the Molex PoE Calculator. Read more <https://www.molexces.com/poe-calculator>

- Molex recommends that the PoE feature on an individual switch port are power disabled prior to unplugging the associated powered Device.

- Molex recommends that the full range of PowerCat 6 products be used in a system to maximize cabling and PoE performance

- Details on Molex requirements for Warranty can be found at <https://www.molexces.com/about-us/our-warranty/>

ORDERING INFORMATION

Order No.	SAP No.	Description
PID-00141-04	182090025	PowerCat 6 Unshielded 24 Port Patch Panel - 1U - Metric fixing kit, Black
PID-00141-04-I	182090027	PowerCat 6 Unshielded 24 Port Patch Panel - 1U - Metric fixing kit, Black, India
PID-00142-04	182090026	PowerCat 6 Unshielded 48 Port Patch Panel - 2U - Metric fixing kit, Black
	182090041	PowerCat 6 Unshielded 48 Port Patch Panel - 2U - US Imperial fixing kit, Black

www.molexces.com/products/copper/cat6/