



IMPORTANT

WARRANTY INFORMATION ON REVERSE SIDE
DO NOT DISCARD. KEEP FOR YOUR REFERENCE.

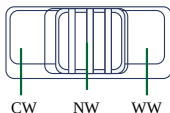
MODEL NUMBER:

DATE OF PURCHASE:

PURCHASED FROM:

AIRBUS LED FASCIA INSTRUCTION MANUAL

- 1) Set desired colour temperature on LED driver prior to installation by sliding the selector switch.

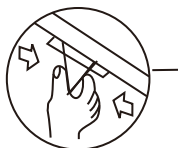


- 2) Attach the LED driver to the fan body by peeling the backing from the double sided tape.

- 3) Plug the LED driver into an available socket outlet in your ceiling cavity. **NOTE:** A second, separately switched outlet may be used for individual fan and light control.

- 4) Knock out the stamped tab in the motor body and feed the LED output connector through. Connect LED driver and panel plugs, screw locking ring to secure.

- 5) Secure the fascia by squeezing the spring fasteners together and insert into the slots in the fan body.



Please consult the Airbus Motor instruction manual for additional information.



OUR GOODS COME WITH GUARANTEES THAT CANNOT BE EXCLUDED UNDER THE AUSTRALIAN CONSUMER LAW. YOU ARE ENTITLED TO A REPLACEMENT OR REFUND FOR A MAJOR FAULT AND COMPENSATION FOR ANY OTHER REASONABLY FORESEEABLE LOSS OR DAMAGE. YOU ARE ALSO ENTITLED TO HAVE THE GOODS REPAIRED OR REPLACED IF THE GOODS FAIL TO BE OF ACCEPTABLE QUALITY AND THE FAILURE DOES NOT AMOUNT TO A MAJOR FAILURE.

**IMPORTANT LED FASCIA WARRANTY INFORMATION FOR OWNER AND INSTALLER.
PLEASE READ AND OWNER TO RETAIN.**

THE FULL WARRANTY POLICY MUST BE READ PRIOR TO SUBMITTING A WARRANTY CLAIM.

THE VENTAIR PRODUCT WARRANTY IS SUBJECT TO THE BELOW.

THE CUSTOMER WILL NOT GAIN THE BENEFIT OF THIS WARRANTY WITHOUT FIRST LODGING A CLAIM.

BEFORE INSTALLATION: Check all components to ensure there is no visible damage. Should there be any damage, contact Ventair support via email: support@ventair.com.au or ph: (03) 9775 0556 to discuss.

WARRANTY PERIOD: This product is covered against manufacturing defects by a two (2) year limited warranty. During this period Ventair will, at our discretion supply parts or provide a replacement unit of the same or comparable model.

IN HOME WARRANTY SERVICE: Not applicable.

COMMERCIAL USAGE: All products have a maximum one (1) year warranty when used in a commercial setting and 'in home' service is not applicable.

PLEASE NOTE:

- The Ventair warranty Terms & Conditions available at www.ventair.com.au/warranty must be met.
- The unit or relevant part must not have been physically damaged, involved in an accident, modified, subject to misuse, neglect or abuse. Fault must not be the result of normal wear and tear.
- A dimmer switch must not have been used with this appliance.
- The product must be installed using the supplied Ventair hardware.
- Discolouration or corrosion damage such as rust or surface damage is not covered under warranty. Regular cleaning will generally prevent such issues.
- Installation faults are not covered under warranty, contact the installer to rectify.

If you suspect a manufacturing defect, lodge a warranty by visiting www.ventair.com.au/warranty

You will need to provide the following information:

- Proof of purchase
- The nature of the fault
- The brand, model number and colour of the unit
- The owners name, address and contact number
- Supporting evidence
- Certificate of electrical safety (if requested)

NO CHARGES WILL BE ACCEPTED WITHOUT PRIOR WRITTEN APPROVAL FROM VENTAIR.

CONTACT US:

Email: support@ventair.com.au
4 Capital Place, Carrum Downs, VIC, 3201
Australia
PH: (03) 9775 0556
<https://ventair.com.au/>