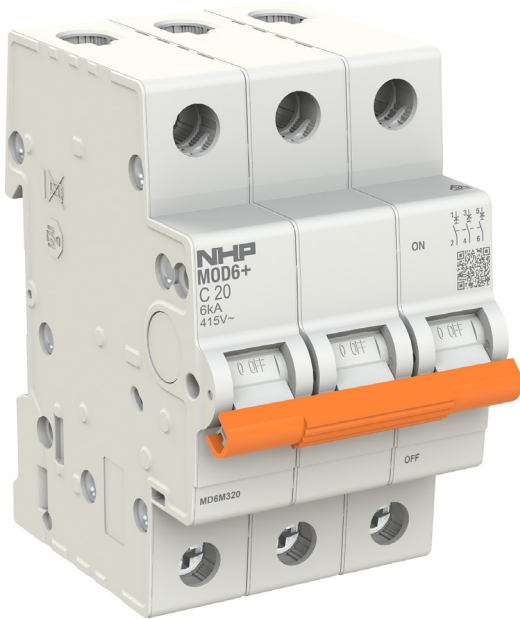


# MD6M350

NHP MOD6+ Miniature Circuit Breaker MCB 6kA 3 Pole 50A C Curve



|                       |                                  |
|-----------------------|----------------------------------|
| <b>Component type</b> | Miniature circuit breaker (MCB)  |
| <b>Range</b>          | MOD6+ Miniature Circuit Breakers |
| <b>Model</b>          | N/A                              |
| <b>Product status</b> | New Item                         |

NHP's MOD6+ range of miniature circuit breakers (MCB) offers cost effective solutions while providing core electrical protection, designed to detect and trip on overload and short circuit currents. These MCBs are available with a 6kA short circuit rating, with current ratings from 6-63A in 1P, 2P or 3P in C trip curve and 80-125A in 1P & 3P in C trip curve.

## ELECTRICAL

|                                                                                     |          |
|-------------------------------------------------------------------------------------|----------|
| Rated current                                                                       | 50 A     |
| Number of poles (total)                                                             | 3        |
| Trip curve                                                                          | C        |
| Rated voltage                                                                       | 415 V    |
| Frequency                                                                           | 50-60 Hz |
| Voltage type                                                                        | AC       |
| Service voltage $U_b$ , AC                                                          | 12 V     |
| Rated short-circuit breaking capacity $I_{cn}$ according to AS/NZS 60898 at 230 VAC | 6 kA     |
| Rated short-circuit breaking capacity $I_{cn}$ according to AS/NZS 60898 at 400 VAC | 6 kA     |
| Max. rated operation voltage $U_e$                                                  | 440 V    |
| Rated insulation voltage $U_i$                                                      | 440 V    |
| Rated impulse withstand voltage $U_{imp}$                                           | 4 kV     |

## CONSTRUCTION

|                               |      |
|-------------------------------|------|
| Additional equipment possible | No   |
| Number of protected poles     | 3    |
| Degree of protection (IP)     | IP40 |

## MECHANICAL

|                                                 |                         |
|-------------------------------------------------|-------------------------|
| Connectable conductor cross section solid-core  | 0.75-25 mm <sup>2</sup> |
| Connectable conductor cross section multi-wired | 0.75-16 mm <sup>2</sup> |

## DIMENSIONS

|                                     |         |
|-------------------------------------|---------|
| Height                              | 85 mm   |
| Width                               | 52.5 mm |
| Depth                               | 75.8 mm |
| Width in number of modular spacings | 3       |
| Weight                              | 0.35 kg |

## ENVIRONMENT

|                  |   |
|------------------|---|
| Pollution degree | 3 |
|------------------|---|

# MD6M350

NHP MOD6+ Miniature Circuit Breaker MCB 6kA 3 Pole 50A C Curve



## ENVIRONMENT

|                                                |             |
|------------------------------------------------|-------------|
| Rated surrounding temperature without derating | 30 °C       |
| Ambient temperature during operating           | -25...70 °C |