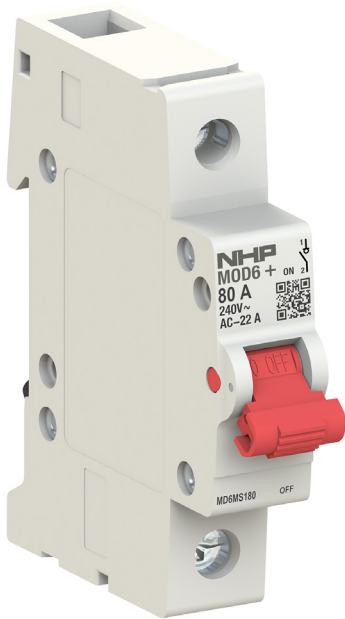


MD6MS180

NHP MOD6+ Main Switch 1 Pole 80A



Component type	Miniature circuit breaker (MCB)
Range	MOD6+ Miniature Circuit Breakers
Model	N/A
Product status	New Item

NHP’s MOD6+ range of miniature circuit breakers (MCB) offers cost effective solutions while providing core electrical protection, designed to detect and trip on overload and short circuit currents. These MCBs are available with a 6kA short circuit rating, with current ratings from 6-63A in 1P, 2P or 3P in C trip curve and 80-125A in 1P & 3P in C trip curve.

ELECTRICAL

Rated current	80 A
Number of poles (total)	1
Rated voltage	240 V
Frequency	50-60 Hz
Voltage type	AC
Service voltage Ub, AC	12 V
Max. rated operation voltage Ue	252 V
Rated insulation voltage Ui	440 V
Rated impulse withstand voltage Uimp	4 kV

CONSTRUCTION

Additional equipment possible	No
Degree of protection (IP)	IP40

MECHANICAL

Connectable conductor cross section solid-core	1-50 mm²
--	----------

DIMENSIONS

Height	85 mm
Width	17.5 mm
Depth	75.8 mm
Width in number of modular spacings	1
Weight	0.09 kg

ENVIRONMENT

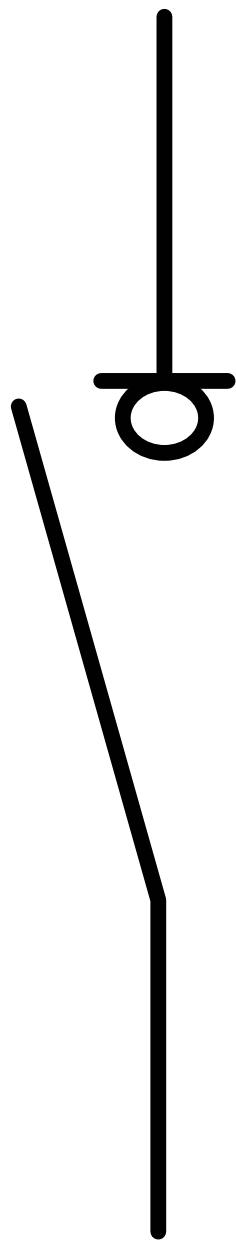
Pollution degree	3
Rated surrounding temperature without derating	35 °C
Ambient temperature during operating	-25...55 °C

MD6MS180

NHP MOD6+ Main Switch 1 Pole 80A



CIRCUIT DIAGRAM



1P

MD6MS180

NHP MOD6+ Main Switch 1 Pole 80A



DIMENSIONAL DIAGRAM

