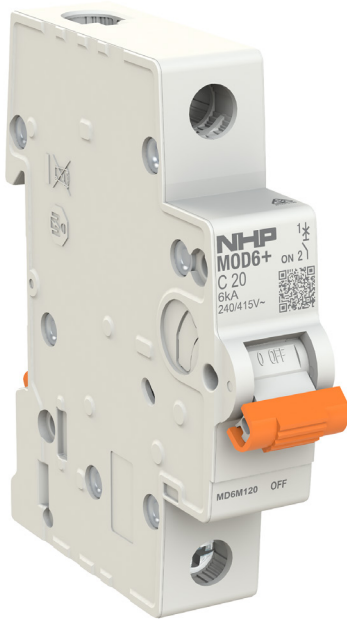


# MD6M125

NHP MOD6+ Miniature Circuit Breaker MCB 6kA 1 Pole 25A C Curve



<b>Component type</b>	Miniature circuit breaker (MCB)
<b>Range</b>	MOD6+ Miniature Circuit Breakers
<b>Model</b>	N/A
<b>Product status</b>	New Item

NHP's MOD6+ range of miniature circuit breakers (MCB) offers cost effective solutions while providing core electrical protection, designed to detect and trip on overload and short circuit currents. These MCBs are available with a 6kA short circuit rating, with current ratings from 6-63A in 1P, 2P or 3P in C trip curve and 80-125A in 1P & 3P in C trip curve.

## ELECTRICAL

Rated current	25 A
Number of poles (total)	1
Trip curve	C
Rated voltage	240 V
Frequency	50-60 Hz
Voltage type	AC
Service voltage $U_b$ , AC	12 V
Rated short-circuit breaking capacity $I_{cn}$ according to AS/NZS 60898 at 230 VAC	6 kA
Rated short-circuit breaking capacity $I_{cn}$ according to AS/NZS 60898 at 400 VAC	6 kA
Max. rated operation voltage $U_e$	440 V
Rated insulation voltage $U_i$	440 V
Rated impulse withstand voltage $U_{imp}$	4 kV

## CONSTRUCTION

Additional equipment possible	No
Number of protected poles	1
Degree of protection (IP)	IP40

## MECHANICAL

Connectable conductor cross section solid-core	0.75-25 mm <sup>2</sup>
Connectable conductor cross section multi-wired	0.75-16 mm <sup>2</sup>

## DIMENSIONS

Height	85 mm
Width	17.5 mm
Depth	75.8 mm
Width in number of modular spacings	1
Weight	0.12 kg

## ENVIRONMENT

Pollution degree	3
------------------	---

# MD6M125

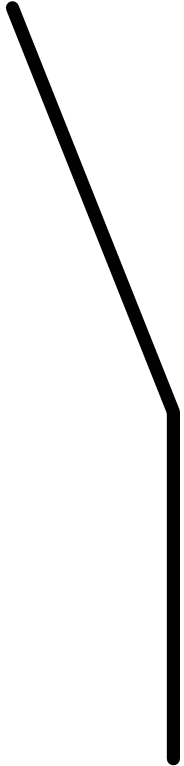
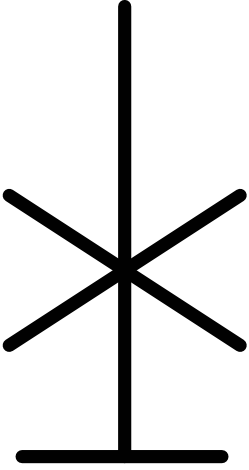
NHP MOD6+ Miniature Circuit Breaker MCB 6kA 1 Pole 25A C Curve



## ENVIRONMENT

Rated surrounding temperature without derating	30 °C
Ambient temperature during operating	-25...70 °C

## CIRCUIT DIAGRAM



# 1P

# MD6M125

NHP MOD6+ Miniature Circuit Breaker MCB 6kA 1 Pole 25A C Curve



## DIMENSIONAL DIAGRAM

