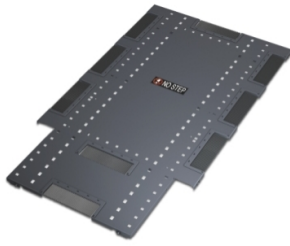


Product datasheet

Specifications



NetShelter SX 600mm Wide x 1200mm Deep Roof Black

AR7211

Overview

Presentation	NetShelter SX roofs feature superior cable access and flexibility with toolless installation and reversibility.
Lead time	Usually in Stock

Main

Provided equipment	Grommets Installation guide
---------------------------	--------------------------------

Physical

Colour	Black
Height	1.6 cm
Width	57.5 cm
Depth	90.8 cm
Net weight	3.64 kg
Mounting preference	No preference
Mounting mode	Not rack-mountable
Marking	18 gauge roof

Packing Units

Unit Type of Package 1	PCE
Number of Units in Package 1	1
Package 1 Height	10.2 cm
Package 1 Width	101.6 cm
Package 1 Length	66 cm
Package 1 Weight	6.36 kg

Contractual warranty

Warranty	2 years repair or replace
-----------------	---------------------------

Disclaimer: This documentation is not intended as a substitute for and is not to be used for determining suitability or reliability of these products for specific user applications


Environmental Data

Schneider Electric aims to achieve Net Zero status by 2050 through supply chain partnerships, lower impact materials, and circularity via our ongoing “Use Better, Use Longer, Use Again” campaign to extend product lifetimes and recyclability.


[Environmental Data explained >](#)

[How we assess product sustainability >](#)

Use Better

 Materials and Substances	
EU RoHS Directive	Pro-active compliance (Product out of EU RoHS legal scope)
REACH Regulation	REACH Declaration

Use Again

 Repack and remanufacture	
Circularity Profile	End of Life Information
Take-back	Yes