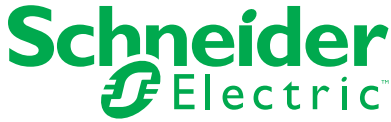


iC60H3/N3 RCBO A9D●●9●●

en



DANGER

HAZARD OF ELECTRIC SHOCK, EXPLOSION, OR ARC FLASH

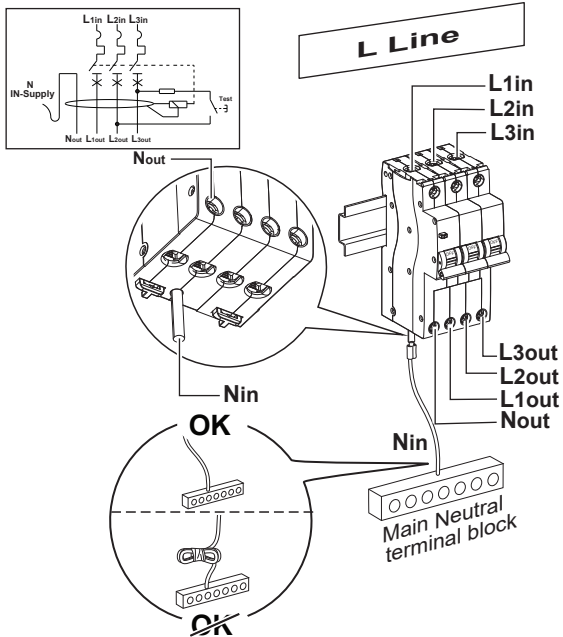
- Turn off all power supplying this device before working on it.
 - Use a voltage tester with a suitable rated voltage in order to check that all active conductors aren't energized.
- Failure to follow these instructions will result in death or serious injury.

2 Connection

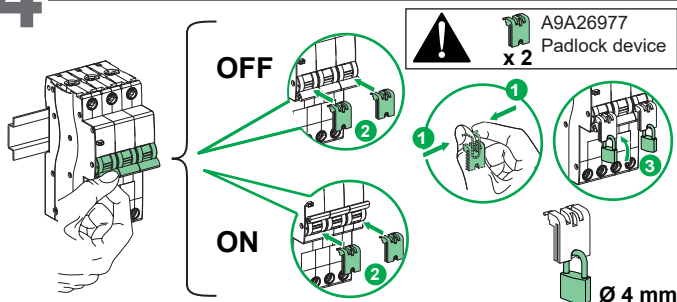
NOTICE

INOPERABLE EQUIPMENT

- Do not bind the neutral cable for installation.
 - Install the neutral cable straight between the iC60H3/N3 RCBO and the main neutral terminal block.
- Failure to follow these instructions can result in equipment damage.



4 Accessories



Schneider Electric Industries SAS

35 rue Joseph Monier
92500 Rueil-Malmaison
France

www.se.com

GEX8391801-05

This product must be installed, connected and used in compliance with prevailing standards and/or installation regulations.

As standards, specifications and designs change from time to time, always ask for confirmation of the information given in this publication.

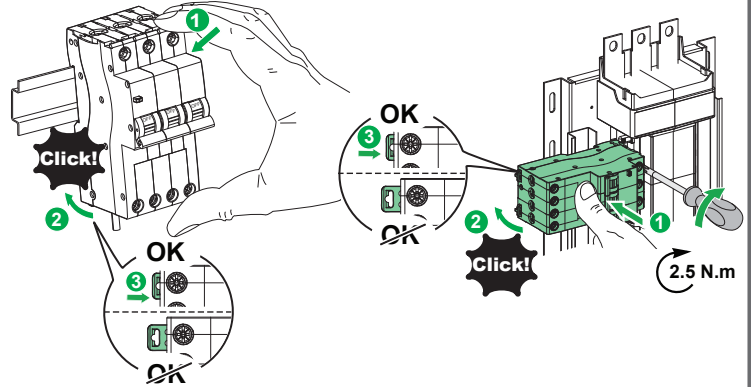
© 06-2024 Schneider Electric - All rights reserved.

1 Installation

DANGER

HAZARD OF ELECTRIC SHOCK, EXPLOSION, OR ARC FLASH

- Install this product in accordance with National Wiring Regulation.
 - Check compatibility with earthing system. Do not use this product on installations which require double pole switching eg. IT or TT systems.
- Failure to follow these instructions will result in death or serious injury.



Stripping length	Rigid cable	Flexible cable	Torque	Screw size
Lin ≤ 14 mm/ Lout ≤ 11 mm/ Nout ≤ 11 mm	Lin ≤ 25 mm ² / Lout ≤ 25 mm ² / Nout ≤ 25 mm ²	Lin ≤ 16 mm ² / Lout ≤ 16 mm ² / Nout ≤ 16 mm ²	2.5 N.m	PZ2

3 Testing

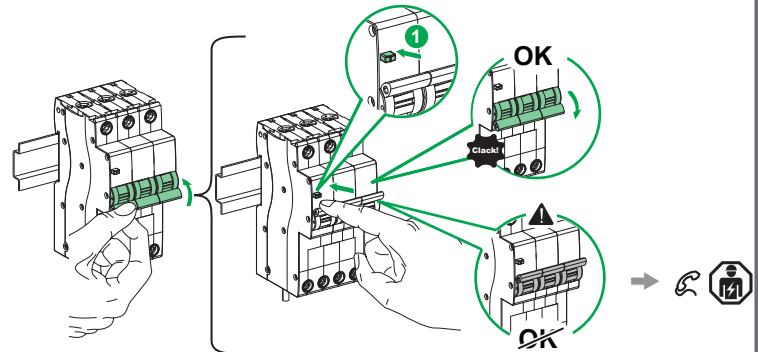
NOTICE

HAZARD OF IMPROPER OPERATION

Do not use Test Button to switch OFF RCBO.

Failure to follow the instruction can result in death, serious injury, or equipment damage.

Note: Test the device at regular intervals by pressing the Test button (marked T), following the intervals defined in your local regulations or monthly.



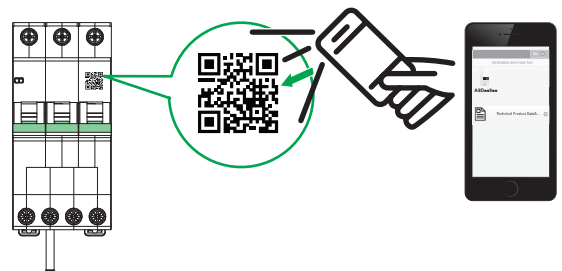
Periodic test:

In the absence of any regulation, Schneider Electric recommends the test should be carried out once a month.

Megger test:

iC60H3/N3 RCBO must be disconnected before any dielectric tests are carried out.

5 More information...



Note: Scan the QR code on product for more information.