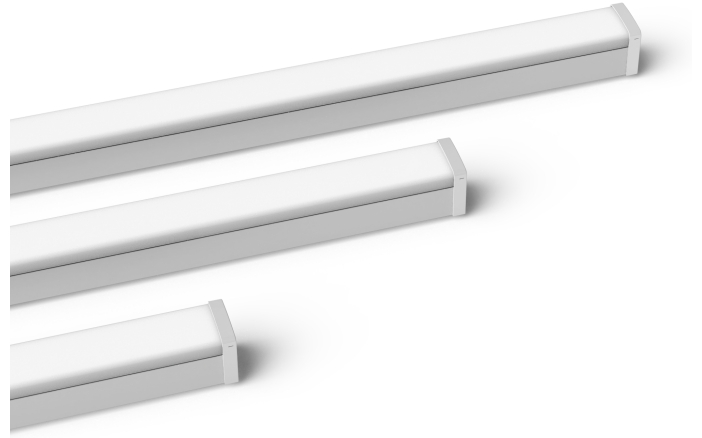


## Spear II

LED Diffused Batten - TRI-CCT

- Narrow profile body
- Opalised reeded diffuser
- Quick close clips
- Ideal for all indoor commercial and residential applications
- Selectable colour temperature



### ORDERING INFORMATION

<b>Order code</b>	11462
<b>Description</b>	Spear II - 1200mm 36W LED Diffused Batten - TRI-CCT
<b>Driver Type</b>	Fixed output
<b>Item Code</b>	AT9860/1200/TRI

### MECHANICAL

<b>Body Material</b>	Steel
<b>Diffuser Material</b>	Polycarbonate
<b>Product Finish</b>	Powdercoated
<b>Fitting Colour</b>	White
<b>IK Rating</b>	IK08
<b>Installation Type</b>	Surface mount
<b>IP Rating</b>	IP20

### ELECTRICAL

<b>Electrical Rating</b>	Class I
<b>Input Frequency</b>	50 Hz
<b>Input voltage</b>	230Vac
In Australia the Input voltage is defined as 230Vac -6%/+10%. This effectively means that the voltage range of these products are 216Vac - 253Vac or 240V +6%	
<b>Maximum Wattage</b>	36 W
<b>Switch Type</b>	Inline
<b>Working Temp Range</b>	0 to 40 °C

### LAMP

<b>Macadam Steps (SDCM)</b>	5-step MacAdam Ellipse
<b>CCT Configuration</b>	TRI-CCT
<b>Colour Rendering Index (CRI)</b>	>80

### LED LIFETIME

<b>LED Lifetime</b>	60000 hrs
This is the Reported LED Lifetime in Hours based on TM-21. Atom does not list the projected or calculated LED lifetime, which is normally longer as TM-21 Addendum B explicitly states "The Calculated and Projected Lp(Dk) are not to be reported". This Lifetime refers to the life of a single LED however the system life is longer since the probability and binomial distribution of all LEDs in the system means that the average led is performing above the specification and compensates for the LEDs falling below.	
<b>LED Lifetime Rating</b>	L70B10
<b>TM-21 Test Hours</b>	10000 hrs

### COLOUR TEMPERATURE

#### 36 Watts

4000 K	3600 lm
5000 K	4100 lm
6500 K	3740 lm

## DRIVER

<b>Dimmable</b>	No
<b>Driver Included</b>	Yes
<b>Integrated Driver</b>	No
<b>Driver Type</b>	Fixed output
<b>Wiring Type</b>	Re-wireable terminal block (3 pin)

## COMPLIANCE

**Product Design Life** 6 years

The product design life relates to the total product life which includes LEDs, drivers and the enclosure. This is different to the LED lifetime which only refers to the economical lifetime of the LEDs at which time the lumen output has dropped below the L Value. The product design life is calculated at the maximum ambient or working temperature of the product and takes into account the Daily Use.

**Daily Use** 12 hrs

The Daily Use is the recommended time required to meet the product's design life. Installations can exceed this time, however the product design life will be reduced proportionally.

## WARRANTY

**Domestic Use Warranty** 3 RTB (Total 3 Years)

**Warranty Operating Hours** 15000 hrs

This product is provided with a warranty up until the stated warranty period or until the stated warranty operating hours has been reached (whichever occurs first).

## DIMENSIONS

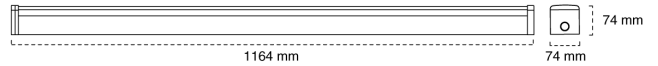
**Product Height** 74 mm

**Product Length** 1164 mm

**Product Width** 74 mm

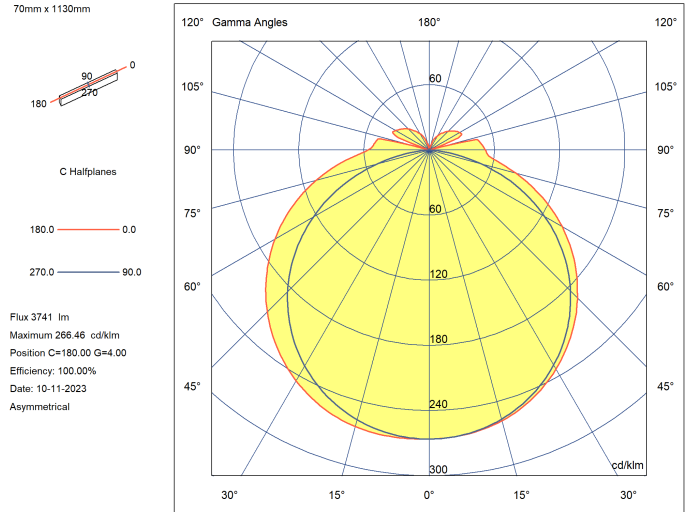
## LINE DRAWINGS

### AT9860/1200/TRI

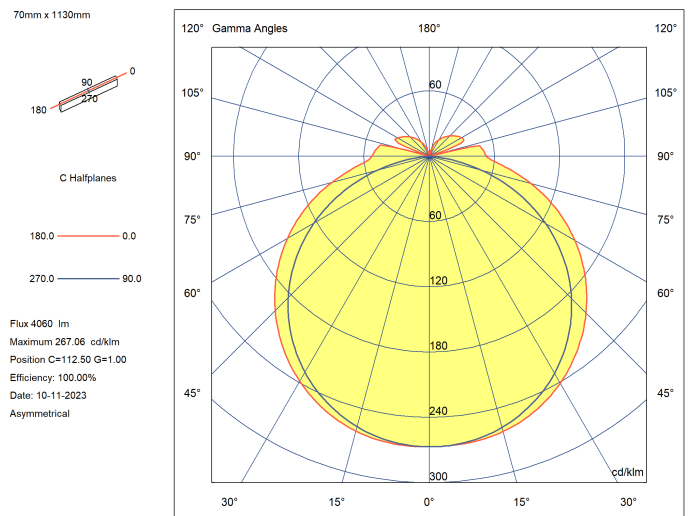


## PHOTOMETRICS

### AT9860/1200/TRI 6500K



### AT9860/1200/TRI 5000K



## AT9860/1200/TRI 4000K

