

CE200N
CE250N



About this product

The Ceiling Exhaust Fan (hereinafter referred to as fan) is a high-performing and reliable fan ideal for a range of residential and commercial applications. The fan is equipped with a plug and lead for easy installation.

Features

- Double insulated.
- High-performance ball bearing motor.
- Easily removable grille for cleaning.

Applications

Residential: Bathrooms, toilets, laundries, sheds.
Commercial: Bathrooms, toilets, workshops, dining rooms, warehouses.

Warranty information (Australia)

We warrant this product for 3 years—visit <https://www.se.com/au/en/about-us/legal/terms-and-conditions.jsp> for details.

Our goods also come with guarantees that cannot be excluded under the Australian Consumer Law. You are entitled to a replacement or refund for a major failure and compensation for any other reasonably foreseeable loss or damage. You are also entitled to have the goods repaired or replaced if the goods fail to be of acceptable quality and the failure does not amount to a major failure.

Warranty information (New Zealand)

We warrant this product for 3 years—visit <https://www.se.com/nz/en/about-us/legal/terms-and-conditions.jsp> for details.

Schneider Electric (Australia) Pty Ltd

Customer Care: 13 73 28
33-37 Port Wakefield Road, Gepps Cross SA 5094
Email: customercare.au@se.com
www.se.com

Schneider Electric (NZ) Ltd

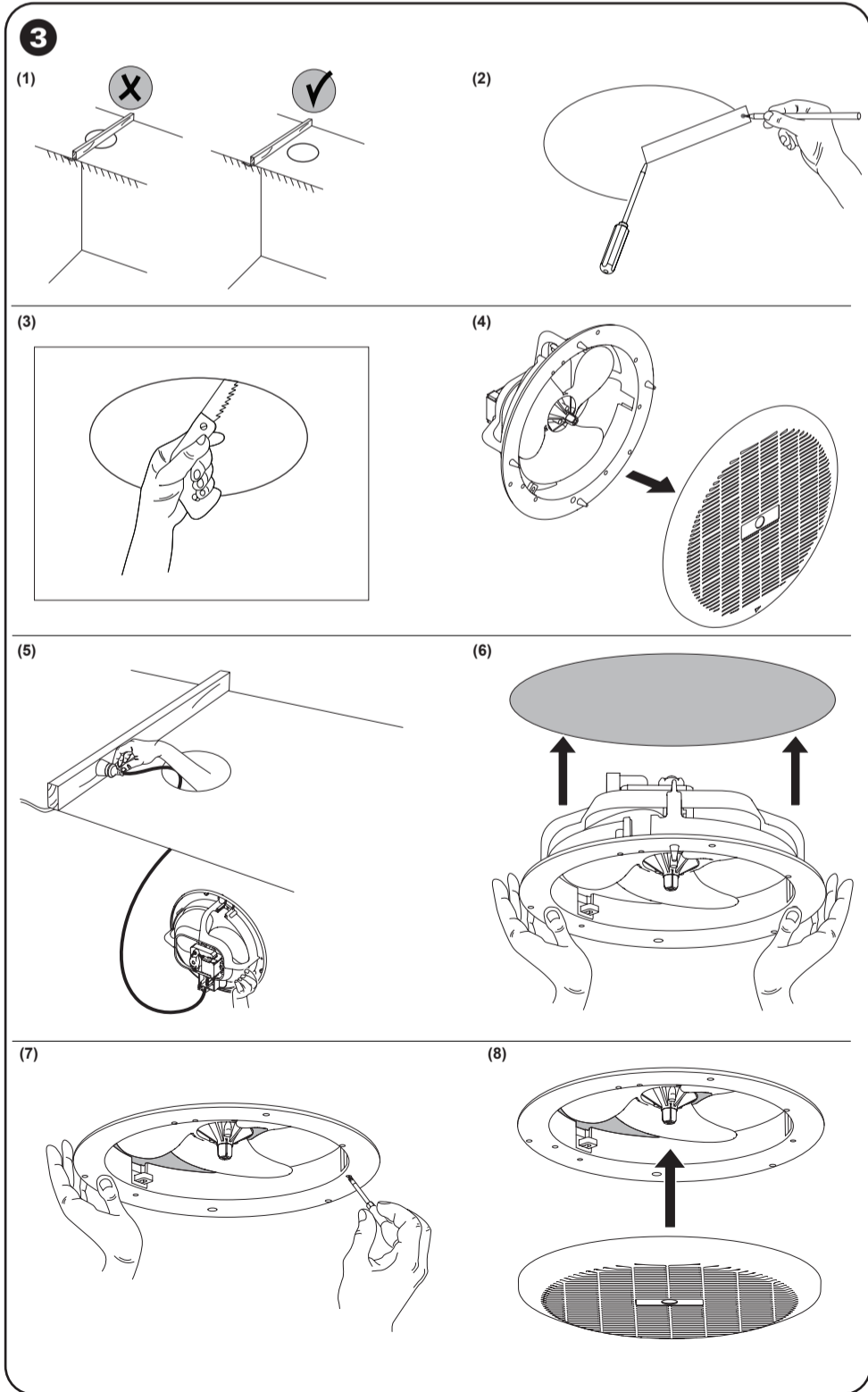
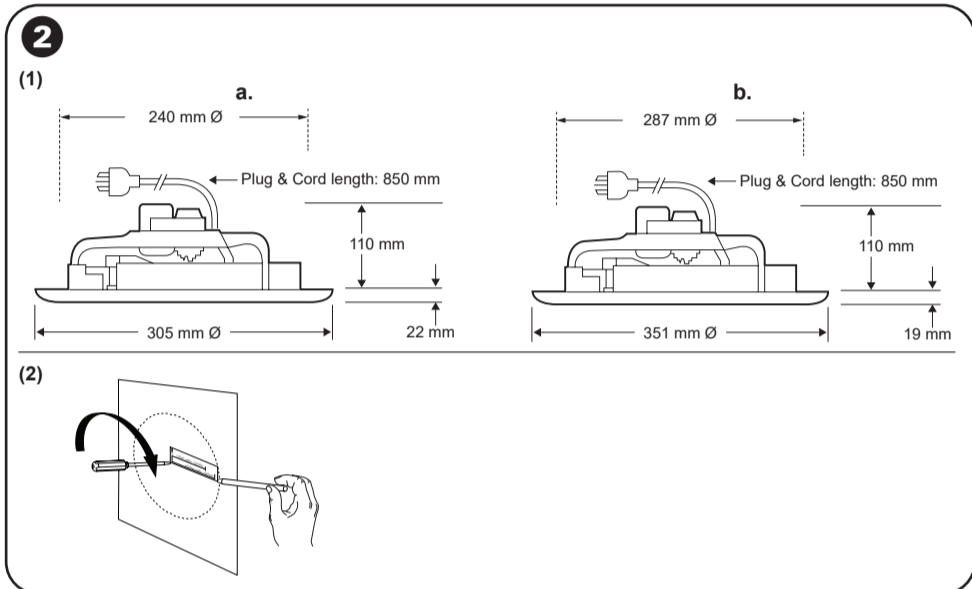
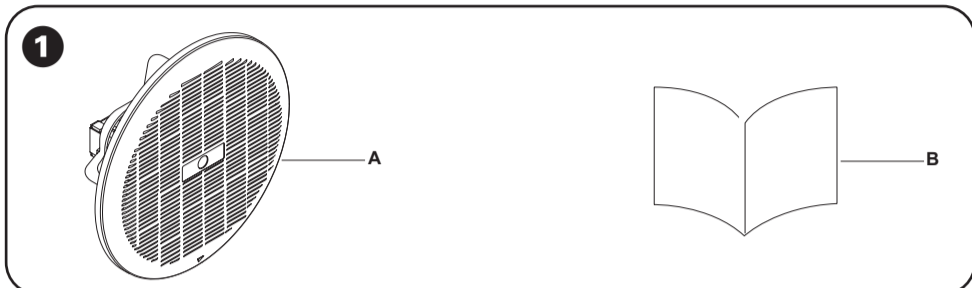
Customer Care: 0800 652 999
Building 6, 60 Highbrook Drive, East Tamaki, 2013, New Zealand
Email: customercare.nz@se.com
www.se.com

Schneider Electric reserves the right to change specifications, modify designs and discontinue items without incurring obligation and whilst every effort is made to ensure that descriptions, specifications and other information in this instruction is correct, no warranty is given in respect thereof and the company shall not be liable for any error therein.

© Schneider Electric 2023

This material is copyright under Australian,

New Zealand and international laws. Except as permitted under the relevant law, no part of this work may be reproduced by any process without prior written permission of and acknowledgement to Schneider Electric.



1 Package contents

- A Ceiling exhaust fan (CE200N/CE250N)
- B Installation instructions

2 Dimensional drawings

- Follow the dimensions for a good fit of the fan into the ceiling.
 - CE200N model
 - CE250N model
- Use the ceiling cutout template to mark the mounting hole for the fan. Anchor the template with a nail or similar object in the centre point, and insert a pencil through the template at the point indicated adjacent to the correct fan model to complete the circle.

Note: A hole cut-out template can be found on the box flap to mark the mounting hole for the fan.

3 Mounting and electrical connections

⚠ DANGER

HAZARD OF ELECTRIC SHOCK, EXPLOSION, OR ARC FLASH

- The fan must be installed and serviced by qualified electrical personnel only and in accordance with local regulations.
- Turn off from supply mains before you perform any maintenance activity.
- Do not use it to exhaust hazardous or explosive vapors.
- Do not operate the fan without the grille or damaged wiring.
- If the supply cord is damaged, it must be returned to customer service agent for the replacement.
- The fan may adversely affect the safe operation of appliances burning gas or other fuels (including those in other rooms) due to the backflow of combustion gases. These gases can potentially result in carbon monoxide poisoning. After the installation of a fan such as a partition fan or a duct fan, the operation of flued gas appliances should be tested by a competent person to ensure that the backflow of combustion gases does not occur.

Failure to follow these instructions will result in death or serious injury.

⚠ CAUTION

EQUIPMENT DAMAGE

- The fan must be mounted at least 120 cm above any hotplate and have at least 50 cm clear space above the fan blades.
- The fan is intended to be mounted at least 2.3 m above the floor.
- Do not install in canopies.
- If ducting is required, use an appropriate clipsal ducted exhaust fan such as CEF40N. Restrictions of any kind behind the fan will affect the performance of the fan.
- To function correctly, the fan must have free air. In some instances, a return air grille may be required.
- Ensure that children do not play with the appliance.
- The appliance is not intended for use by children or infirm persons without supervision.

Failure to follow these instructions can result in injury or equipment damage.

- Choose the desired position in the ceiling to mount the fan and ensure there are no hidden obstructions.
 - Use the template to mark the mounting hole.
 - Use a jig saw, keyhole saw, or other methods to cut along the marked line.
 - Remove the grille from the fan.
 - Connect the 2-pin plug to the power outlet.
 - Insert the fan assembly into the mounting hole.
- NOTE:** Ensure that flex is not fouling fan blades and the ceiling insulation is not obstructing airflow.
- Push out bar clamps and use a screwdriver to tighten the screws.
 - Fit the grille onto the fan assembly.

Note
In addition to Australian standards approval, the fan is fitted with an impedance protector motor. Restricting airflow and obstructing fan blades can cause premature failure.

Maintenance
Grille: Remove and wash in warm water, then rinse. Dry the grille before reinstalling it. Failure to follow this could cause damage to the roof materials.
Fan blade: Wipe the blades with a damp rag. Never immerse the motor in cleaning solution or any other liquid.

Technical data

Fan model	CE200N	CE250N
Airflow	260 m³/hr	358 m³/hr
Sound level (at 3 m)	45 dBA	44 dBA
Plug and cord length	2-pin plug with 850 mm cord length	
Number of speeds	1	
Mounting	Ceiling	
Fan type	Axial	
Ducted	No	
Rated voltage	230–240 Vac / 50 Hz	
Power rating	30 W	36 W
Full load current	0.21 A	0.32 A
Power factor	0.5	