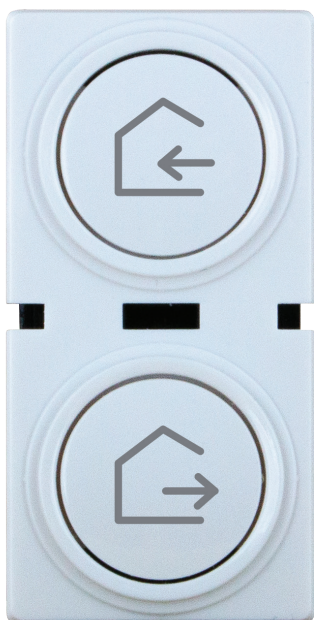


Datasheet

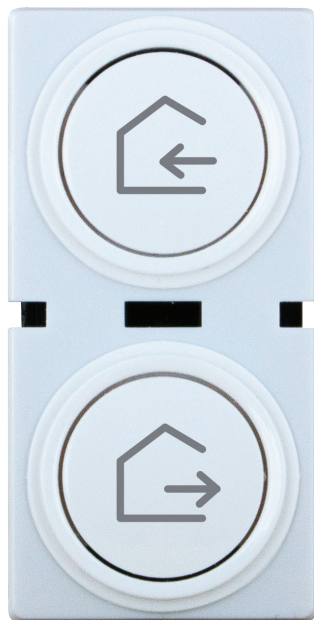
Excel Life™ Smart

Clip-in Wireless Master Switch

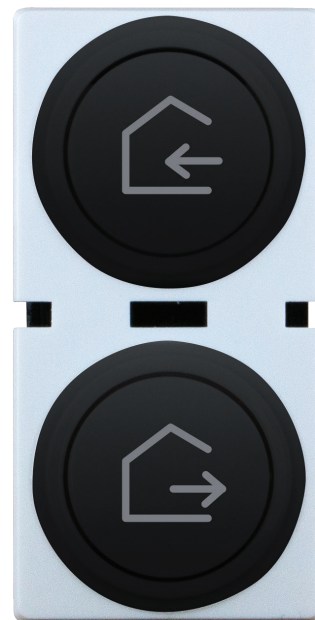
CAT. NO. EWNWCMSWE, EWNWCMSMW, EWNWCMSMB



EWNWCMSWE



EWNWCMSMW

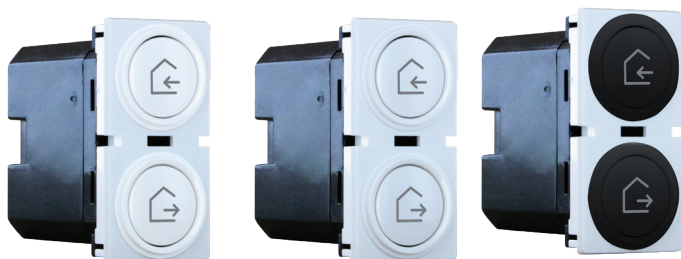


EWNWCMSMB

Cat. No.	EWNWCMSWE	EWNWCMSMW	EWNWCMSMB
Colour	White (WE)	Matt White (MW)	Matt Black (MB)
Description	Clip-in Wireless Scenario switch Home/Away		
Battery	CR2032 3 V d.c.		
Wired/Wireless	Wireless		
Wireless Connectivity	Zigbee 2.4 Ghz to 2.4835 Ghz		
Mounting	Clip in Excel Life™ Smart grids:EWN1GPL, EWN2GPL, EWN3GPL series		
Product Dimension (W X H X D)	48 x 24 x 43 mm		
Compliance	AS/NZS 60669.2.1, AS/NZS 4268, ETSI EN 300 328		

Excel Life™ Smart Clip-in Wireless Master Switch

CAT. NO. **EWNWCMSWE, EWNWCMSMW, EWNWCMSMB**



FEATURES

- Wireless Master Switch to expand an Excel life™ Smart installation (requires prior installation of Starter kit EWNSKIT series or Gateway Cat. No. 412181).
- Enable activation of 2 scenarios “Home” or “Away”, controlling smart switches, dimmers, micromodules, shutter/blind switches or powerpoints.
- Easily customisable in the Home+Control app.
- Clip into Excel Life™ Smart grids for a perfect integration alongside other Excel Life™ Smart and Excel Life™ mechanisms.

Single product	
Cat. No.	Barcode
EWNWCMSWE	9321001523611
EWNWCMSMW	9321001523628
EWNWCMSMB	9321001523635

Inner box (QTY 10)	
Cat. No.	Barcode
EWNWCMSWE	9321001523796
EWNWCMSMW	9321001523802
EWNWCMSMB	9321001523819

Outer box (QTY 120)	
Cat. No.	Barcode
EWNWCMSWE	9321001523970
EWNWCMSMW	9321001523987
EWNWCMSMB	9321001523994

Legrand Australia
1300 369 777
www.legrand.com.au
ABN 31 000 102 661

Legrand New Zealand
0800 476 009
www.legrand.co.nz

Refer to your group buying office, Legrand Sales Representative or Legrand Sales Office for pricing.

Please note: specifications are subject to change without prior notice.



LE14250AB

05 / 2024