

Product Datasheet

Auxiliary Socket Outlet Panel (ASOP.43)



- IP23
- Powder coated Orange X15
- Insulated cable support bar
- Wall mounted

Specifications

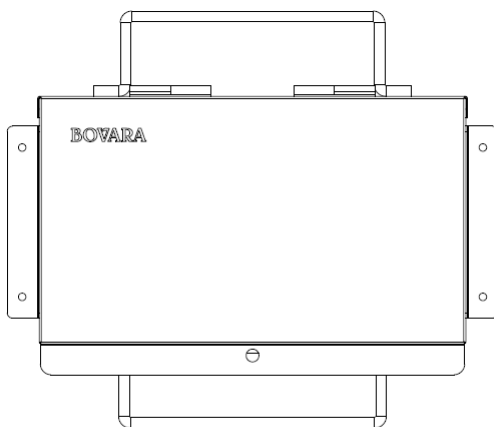
Category	Onsite Power
Subcategory	Auxiliary Socket Outlet Panels
IP Rating	IP23
Compliance	AS/NZS 3000:2018
Wiring	Pre-wired
Locking Mechanism	Padlockable lid, padlock for RCBO
Phases	1
GPO 10 Amp Single	6
Lid	Yes
Ics, Rated Breaking Capacity	4.5kA
UN, Nominal Operational Voltage, AC	240V AC
Rated Frequency	50Hz
In, Rated Current	16A
Earth Stud	Included
No. of 10A Socket Outlets	6
Poles (18mm), Total	14
RCD Poles	1Ø 1P + N (switched)
Cable Entry	Front + Bottom laser etched knockouts
Wire/Conductor Size, Top, Max	16mm ² Tunnel Terminal
Weight	11kg

Part No.

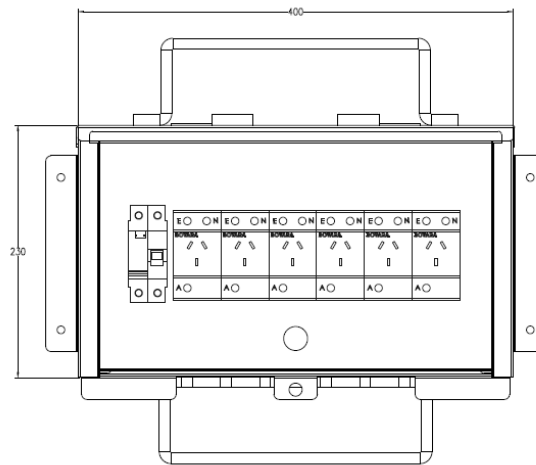
Description

ASOP.43

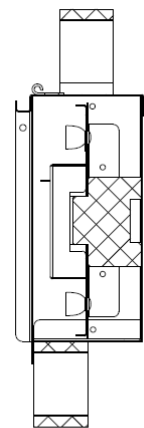
Dimensions (H x W x D): 235 x 400 x 250mm



FRONT VIEW
DOOR CLOSED

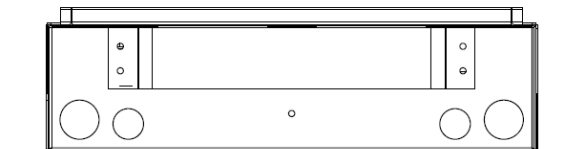
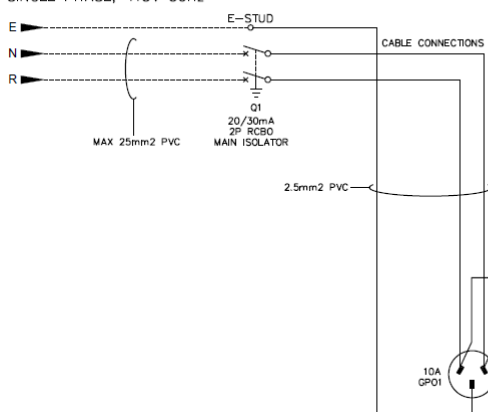


FRONT VIEW
DOOR AND
MULLION REMOVED



'A'-A' VIEW

INCOMING SUPPLY
SINGLE PHASE, 415V 50Hz



CONSTRUCTED TO:
AS/NZS 3000:2018 Electrical Installations -Wiring Rules
AS/NZS 3012:2010 Electrical installations -Construction

BOTTOM VIEW

BOVARA
ELECTRICAL EQUIPMENT

sales@bovara.com.au
1300-268-272
www.bovara.com.au