

# Horizon Roof & Plinth



B&R Horizon metering enclosure accessories, allowing use in a wider range of environments.

Made in AUSTRALIA

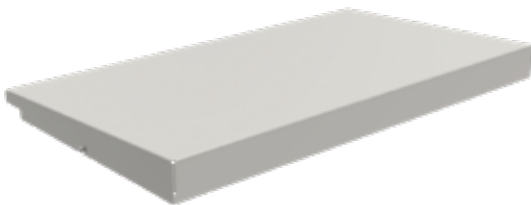
## Horizon Roof

- Designed for use in exposed weather applications.
- Complies with supply authority rules and regulations.
- Suitable for use with all Horizon meterboxes (485mm wide, galvanised steel).
- Provides increased protection for electrical equipment inside the metering enclosure.
- Product design allows ventilation providing solar sun shading for the enclosure.
- Easy to retro-fit - only two holes to be drilled.
- Manufactured from 1.0mm galvanised steel.
- Powdercoated RAL7035 Light Grey.



## Horizon Plinth

- Designed to mate under standard meter box, when unable to be wall mounted.
- Complies with supply authority rules and regulations.
- Suitable for use with all Horizon meterboxes (485mm wide, galvanised steel).
- Plinth dimensions are 690mm H x 485mm W x 240mm D.
- Easy access for bolting to concrete foundations.
- Plinth cover leaves no visible fixing points.
- Compliant to region C wind load according to AS/NZS1170.2
- Manufactured from 1.2mm galvanised steel.
- Powdercoated RAL7035 Light Grey.



HZN/ROOF



HZN/PLINTH



S20 with Roof & Plinth attached.  
All items are sold separately.



Please note **Horizon V5** cannot be plinth mounted