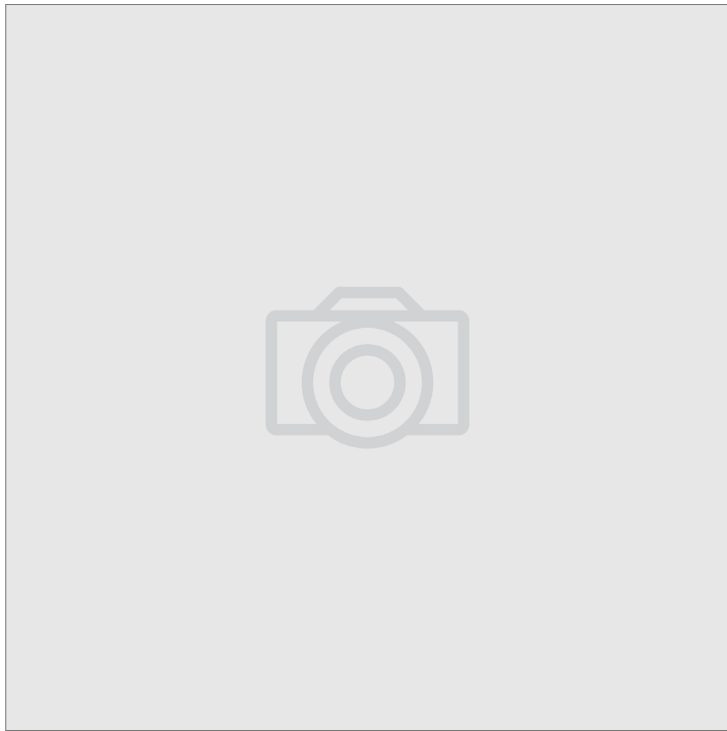


KTA940H10A

S&S KT9 Motor Protection Circuit Breaker KTA9 40H Frame D
6.3 to 10A



Component type	Motor protection circuit-breaker
Range	KT9
Model	N/A
Product status	Existing

The Sprecher + Schuh KT9 Motor Protection Circuit Breakers (MPCBs) provide magnetic short-circuit and thermal overload protection up to 40A. Offering ratings enabling assembled starters to be applied without additional branch circuit protection. Motor circuit protectors are applied with a separate overload relay for three-component starters and are available in two frame sizes.

ELECTRICAL

Rated permanent current I _u	10.0 A
Switch off technique	Thermomagnetic
Overload release current setting	6.3 - 10 A
Max. rated operation voltage U _e	690.0 V
Rated short-circuit breaking capacity I _{cu} at 400 V, AC	100.0 kA
Rated operation power at AC-3, 400 V	4.0 kW
Type of control element	Turn handle
Type of electrical connection of main circuit	Screw connection
Number of poles	3.0

CONSTRUCTION

Degree of protection (IP)	IP2X
---------------------------	------

MECHANICAL

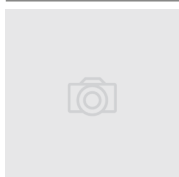
Max. tightening torque	2.5 Nm
------------------------	--------

DIMENSIONS

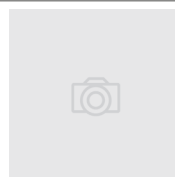
Height	96.3 mm
Width	45.0 mm
Depth	93.7 mm
Weight	0.39 kg

RELATED PRODUCTS

ACCESSORY



Item No: CA7FMS
Required: No
Description: S&S CA7 Tag Marking Sheet 105 Stickers



Item No: KT940A3E
Required: No
Description: S&S KT9 Feeder Terminal for Compact Busbar for KTA9 32S and 40H

KTA940H10A

S&S KT9 Motor Protection Circuit Breaker KTA9 40H Frame D
6.3 to 10A



RELATED PRODUCTS

ACCESSORY

	Item No: KT940DB452 Required: No Description: S&S KT9 Busbar 3Pole 64A 2 Starters with Front Mount Auxiliary		Item No: KT940HPEC37 Required: No Description: S&S KT9 Connection Link KT940H to CA7 30 to 37
	Item No: KT940DB453 Required: No Description: S&S KT9 Busbar 3Pole 64A 3 Starters with Front Mount Auxiliary		Item No: KT940HPNC23 Required: No Description: S&S KT9 Connection Link KT940H to CA7 09 to 23 Separate Mount
	Item No: KT940DB454 Required: No Description: S&S KT9 Busbar 3Pole 64A 4 Starters with Front Mount Auxiliary		Item No: KT940HPNC37 Required: No Description: S&S KT9 Connection Link KT940H to CA7 30 to 37 Separate Mount
	Item No: KT940DB455 Required: No Description: S&S KT9 Busbar 3Pole 64A 5 Starters with Front Mount Auxiliary		Item No: KT9AA120V Required: No Description: S&S KT9 Shunt Trip 110VAC
	Item No: KT940DB542 Required: No Description: S&S KT9 Busbar 3Pole 64A 2 Starters with Side Mount Auxiliary		Item No: KT9AA24D Required: No Description: S&S KT9 Shunt Trip 24VDC
	Item No: KT940DB543 Required: No Description: S&S KT9 Busbar 3Pole 64A 3 Starters with Side Mount Auxiliary		Item No: KT9AA24V Required: No Description: S&S KT9 Shunt Trip 24VAC
	Item No: KT940DB544 Required: No Description: S&S KT9 Busbar 3Pole 64A 4 Starters with Side Mount Auxiliary		Item No: KT9AA277V Required: No Description: S&S KT9 Shunt Trip 240VAC
	Item No: KT940DB545 Required: No Description: S&S KT9 Busbar 3Pole 64A 5 Starters with Side Mount Auxiliary		Item No: KT9AA480V Required: No Description: S&S KT9 Shunt Trip 415VAC
	Item No: KT940HPEC23 Required: No Description: S&S KT9 Connection Link KT940H to CA7 09 to 23		Item No: KT9CA Required: No Description: S&S KT9 Anti Tamper Shield

KTA940H10A

S&S KT9 Motor Protection Circuit Breaker KTA9 40H Frame D
6.3 to 10A



sprecher+schuh
MOTOR PROTECTION

RELATED PRODUCTS

ACCESSORY

	Item No: KT9HT Required: No Description: S&S KT9 Extension Shaft 250mm		Item No: KT9PA120 Required: No Description: S&S KT9 Auxiliary Contact with 2NO Contact Side Mount
	Item No: KT9HTL Required: No Description: S&S KT9 Extension Shaft 400mm		Item No: KT9PE110 Required: No Description: S&S KT9 Auxiliary Contact with 1NO Contact Front Mount
	Item No: KT9HTN Required: No Description: S&S KT9 Classic Door Mounted Operator Black		Item No: KT9PE111 Required: No Description: S&S KT9 Auxiliary Contact with 1NO Contact and 1NC Contact Front Mount
	Item No: KT9HTRY Required: No Description: S&S KT9 Classic Door Mounted Operator Red and Yellow		Item No: KT9PE120 Required: No Description: S&S KT9 Auxiliary Contact with 2NO Contact Front Mount
	Item No: KT9KN Required: No Description: S&S KT9 Lockable Twist Knob Black		Item No: KT9PEF1S01N10 Required: No Description: S&S KT9 Auxiliary Contact with 1NO Contact Trip Contact 1NC Contact Front Mount
	Item No: KT9KRY Required: No Description: S&S KT9 Lockable Twist Knob Red and Yellow		Item No: KT9PEF1S10M10 Required: No Description: S&S KT9 Trip Contact with 1NO Trip Contact and 1NO Contact Front Mount
	Item No: KT9N45 Required: No Description: S&S KT9 Screw Adapter		Item No: KT9PEF1S10N01 Required: No Description: S&S KT9 auxiliary Contact with 1NC Trip Contact and 1NO Contact Front Mount
	Item No: KT9PA102 Required: No Description: S&S KT9 Auxiliary Contact with 2NC Contact Side Mount		Item No: KT9PEF1S10N10 Required: No Description: S&S KT9 Auxiliary Contact with 1NO Contact Trip Contact 1NO Contact Front Mount
	Item No: KT9PA111 Required: No Description: S&S KT9 Auxiliary Contact with 1NO Contact and 1NC Contact Side Mount		Item No: KT9SHS Required: No Description: S&S KT9 Extension Shaft Support

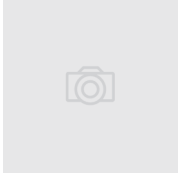
KTA940H10A

S&S KT9 Motor Protection Circuit Breaker KTA9 40H Frame D
6.3 to 10A



RELATED PRODUCTS

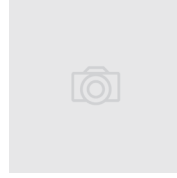
ACCESSORY



Item No: KT9UA120V

Required: No

Description: S&S KT9 Undervoltage Trip
110VAC



Item No: KT9UA480V

Required: No

Description: S&S KT9 Undervoltage Trip
415VAC