

# Your Guide to...

Photocell, Controllers  
& Photocell Receptacles Types

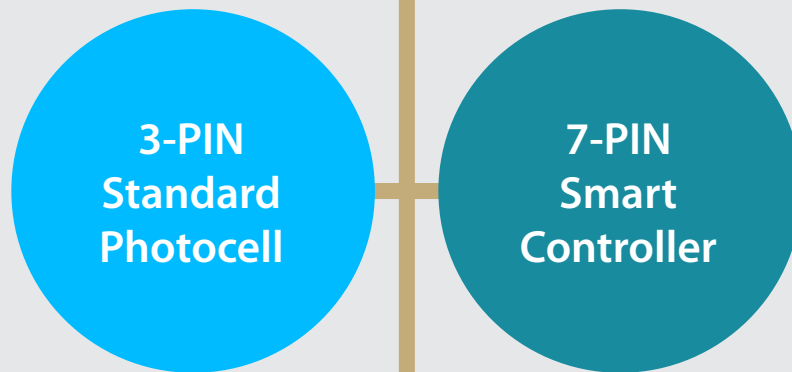
**ON-OFF**



# Photocell, Controllers & Photocell Receptacle Types



# Photocell/Controller Types

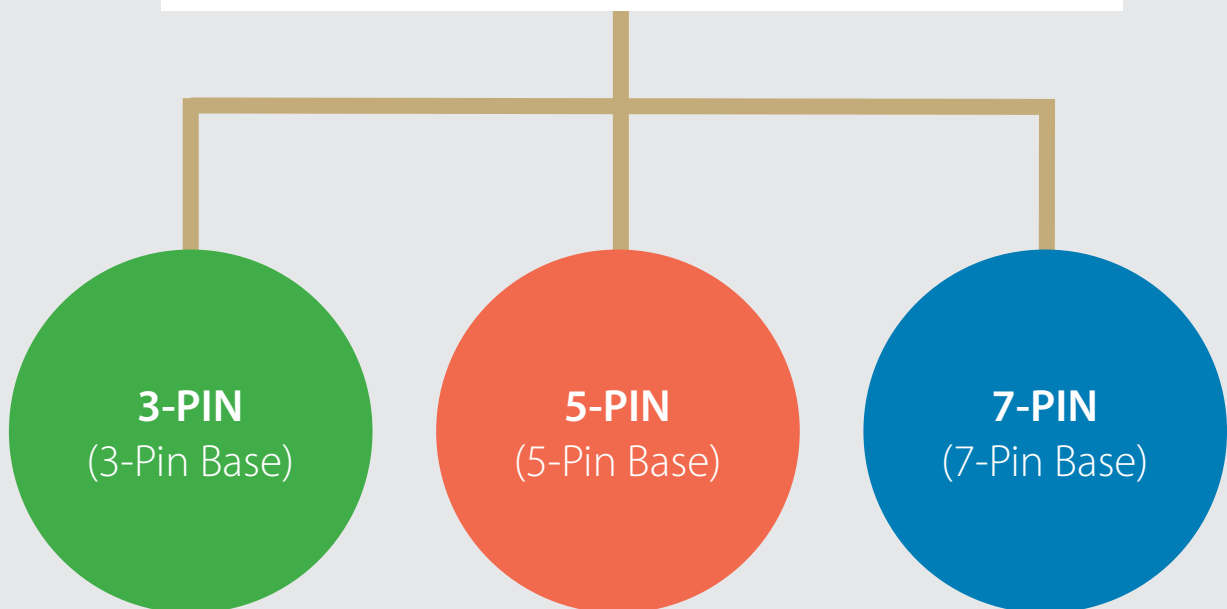


Basically it's a Switch

**ON-OFF**  
Sun up to sun down

**ON-OFF**  
Sun up to sun down  
Astro-clock  
Dimming  
Scheduling  
Sensor  
Remote

# Photocell Receptacles Types



3-PIN Receptacle Interface Common to all  
5-PIN and 7-PIN will accept both types of Photocells - All have the same 3-PIN center power/switch plug - The 'Pads' are for controls.

# Your Guide **PE Cells**

## Select the correct PE Cell for your application

The power interface on all photocells and controllers include the same three large twist lock pins which are - **line, switch and neutral**.

3-PIN



**M-240  
(101035)  
Alternative  
Replacement**

### JL-205C

<b>Code</b>	101070
<b>Type</b>	Electronic
<b>Rated Voltage</b>	120V~277V
<b>Rated Frequency</b>	50/60Hz
<b>Rated Loading</b>	1800VA
<b>Surge Arrestor</b>	Fitted
<b>Operating Level</b>	'ON' 10~20 lux (+/-10%), 'OFF' 30~60 lux (+/-10%)
<b>Temperature Range</b>	-40°C to +70°C
<b>Related Humidity</b>	100%
<b>Base</b>	3 Pin NEMA
<b>Weatherproof</b>	Yes

3-PIN



### JL-202B (LC208-277)

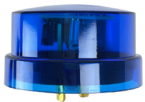
<b>Code</b>	101090
<b>Type</b>	CdS
<b>Rated Voltage</b>	240V
<b>Rated Frequency</b>	50/60Hz
<b>Rated Loading</b>	1000VA
<b>Operating Level</b>	'ON' 15 lux / 'OFF' 50 lux (+/-10%)
<b>Temperature Range</b>	-40°C to +70°C
<b>Related Humidity</b>	96%
<b>Base</b>	3 Pin NEMA



### BCM - 15 NEMA BASE

<b>Code</b>	100190
<b>Description</b>	Locking base for 3 Pin NEMA CELL
<b>Rated Mounting</b>	Weatherproof Onto M20 threaded nipple
<b>Dimensions</b>	Ht 96mm Dia 65mm

3-PIN



**207NPIT  
(101060)  
Alternative  
Replacement**

### OPT-07

<b>Code</b>	101065
<b>Type</b>	Electronic
<b>Rated Voltage</b>	220V~240V
<b>Rated Frequency</b>	50/60Hz
<b>Rated Loading</b>	1800VA
<b>Operating Level</b>	'ON' 10~16 lux (+/-10%), 'OFF' 30 lux (+/-10%)
<b>Temperature Range</b>	-40°C to +70°C
<b>Related Humidity</b>	100%
<b>Base</b>	3 Pin NEMA
<b>Weatherproof</b>	Yes

Pictorial is representative only. Specifications may change without notice.



# Your Guide **Photocell Receptacles**

**3-PIN**
**ON-OFF**  
**Sun up to sun down**

**PBM 2403 (L)**

<b>Code</b>	101020
<b>Type</b>	CdS
<b>Rating</b>	3 Amps
<b>Normal Input</b>	240V/50HZ (+/- 10%)
<b>Operating Levels</b>	'ON' 31.5-125 Lux 'OFF' <400 Lux
<b>Construction</b>	Melamin Phenol Resin
<b>Dimensions</b>	26mm (Ø) 63mm (H) 51mm Cell Cover Length
<b>Base</b>	D2 Type


**JL-103B (AA-1068)**

<b>Code</b>	101080
<b>Type</b>	CdS
<b>Rated Voltage</b>	220V~240V
<b>Rated Frequency</b>	50/60Hz
<b>Rated Loading</b>	500W
<b>Operating Level</b>	'ON' 16 lux / 'OFF' 65 lux (+/-10%)
<b>Temperature Range</b>	-40°C to +70°C
<b>Related Humidity</b>	96%
<b>Leads Length</b>	100mm
<b>Construction</b>	Button with lock-nut

**5-PIN &  
7-PIN  
Coming  
Soon!**


**PBL2403 3 Amp**

<b>Code</b>	101000
<b>Type</b>	CdS
<b>Rating</b>	3 Amps
<b>Normal Input</b>	240V ±10%
<b>Operating Levels</b>	'ON' 10-80 Lux 'OFF' <400 Lux
<b>Construction</b>	Acrylic resin cover with polystyrene body, Steel Mounting bracket
<b>Weatherproof</b>	Yes
<b>Dimensions</b>	76mm (H) 64mm offset from wall


**PBL2406 6 Amp**

<b>Code</b>	101005
<b>Type</b>	CdS
<b>Rating</b>	6 Amps
<b>Normal Input</b>	240V ±10%
<b>Operating Levels</b>	'ON' 10-80 Lux 'OFF' <400 Lux
<b>Construction</b>	Acrylic resin cover with polystyrene body, Steel Mounting bracket
<b>Weatherproof</b>	Yes
<b>Dimensions</b>	76mm (H) 64mm offset from wall


**PBL2410 10 Amp**

<b>Code</b>	101010
<b>Type</b>	CdS
<b>Rating</b>	10 Amps
<b>Normal Input</b>	240V ±10%
<b>Operating Levels</b>	'ON' 10-80 Lux 'OFF' <400 Lux
<b>Construction</b>	Acrylic resin cover with polystyrene body, Steel Mounting Bracket
<b>Weatherproof</b>	Yes
<b>Dimensions</b>	76mm (H) 64mm offset from wall

Pictorial is representative only. Specifications may change without notice.





## TECHNOLOGY PARTNERS



**Sammode**  
Technical lighting since 1927



### HEAD OFFICE

Eye Lighting Australia Pty Ltd  
15 Industrial Avenue  
Wacol QLD 4076

Tel 1800 635 383  
Fax +61 (0) 7 3335 3533  
Email [info@eli.com.au](mailto:info@eli.com.au)

### Follow Eye Lighting Australia on Social Media



**EMPLOYING LIGHT TECHNOLOGY**   
*TO CREATE A COMFORTABLE SOCIETY AND SUSTAINABLE ENVIRONMENT*

[www.eyelighting.com.au](http://www.eyelighting.com.au)

Although every effort has been made to ensure accuracy in the compilation of the technical detail within this publication. Specifications and performance data are constantly changing, latest details can be obtained from [www.eyelighting.com.au](http://www.eyelighting.com.au).