



**NOX BOX**

Junctioning made simple

# NOXBOX

## ML-NOXBOX-200



### Product information

Designed to fit in almost any exterior or interior location, the NOXBOX Series from M-Elec is designed by electricians, for electricians. The second model of various sizes of junction boxes, the NOXBOX200 is rated IP65 for vertical installation <sup>1</sup> it features a folding lid, screw-less clamps, quick-snap LOX connectors <sup>2</sup> and both rear/bottom knock-out entry points. With no other comparable products on the market that offer the speed, ease of installation and slim design, the NOXBOX200 will improve every job it is used for.

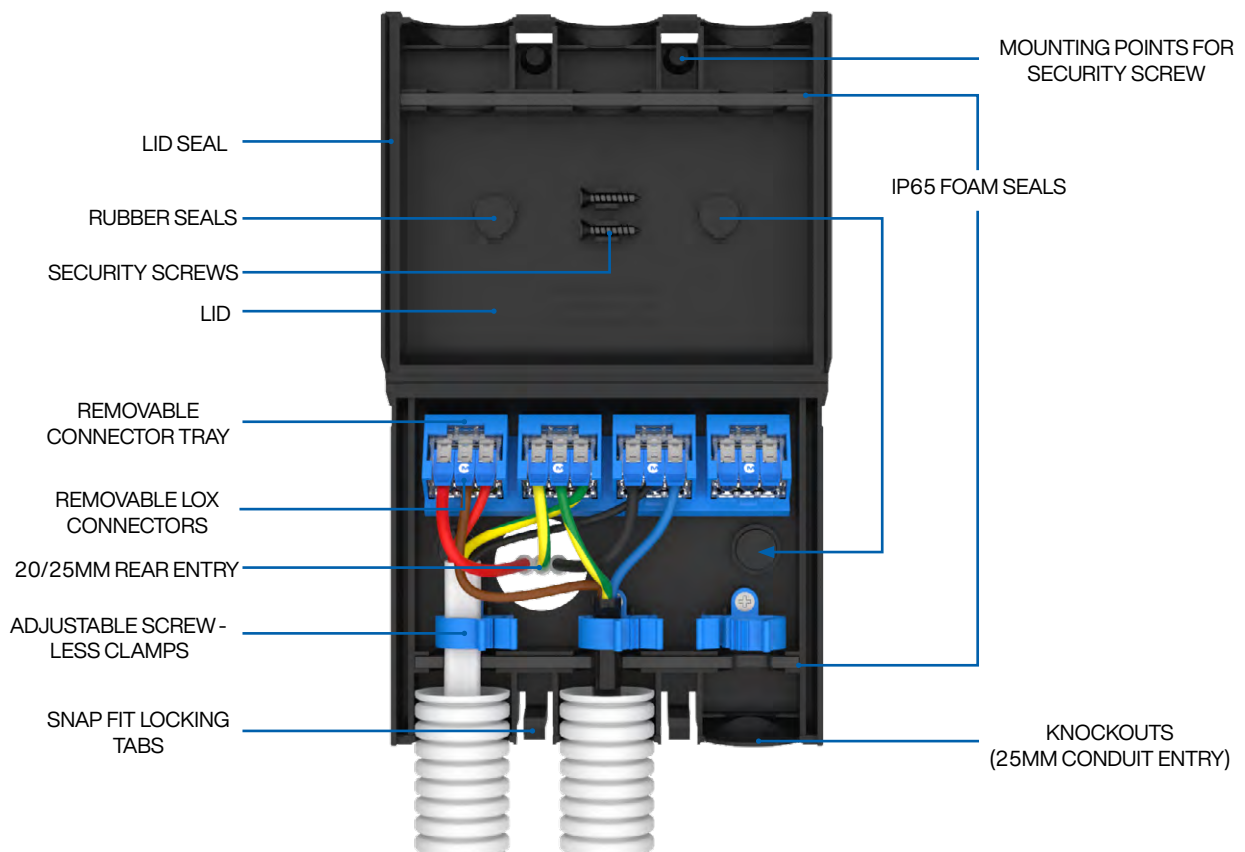


### TECHNICAL DETAILS

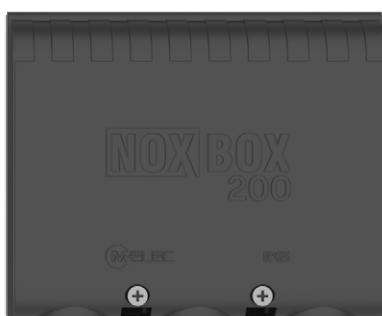
<b>Product dimensions</b>	H: 96mm x W:116mm x D: 36mm (Closed)
<b>Product weight</b>	0.106kg
<b>Construction/materials</b>	<ul style="list-style-type: none"><li>• One - piece UV - stabilised PP body</li><li>• 3 x pre - installed ABS clamps and 1 x pre - installed connector base</li><li>• 2 x rubber seals to cover fixing points</li><li>• Pre - installed foam and silicon seals for IP65 Protection <sup>1</sup></li><li>• 2 x Security Screws</li><li>• 4 x LOX Connectors <sup>2</sup> (Connected trio) (ML-LOX-4-3J)</li></ul>
<b>Compliance</b>	AS/NZS IEC 60670.22:2012 used in conjunction with AS/NZS IEC 60670.1:2012
<b>IP rating</b>	<ul style="list-style-type: none"><li>• IP65 rating - ONLY FOR VERTICAL INSTALLATION <sup>1</sup></li></ul>
<b>Temperature range</b>	-20°C to +45°C
<b>Suits cable</b>	0.2mm <sup>2</sup> - 4mm <sup>2</sup> flexible & rigid
<b>Contents</b>	1 x NOXBOX200 Kit
<b>Warranty</b>	5 Years

## INSTALLATION INSTRUCTIONS

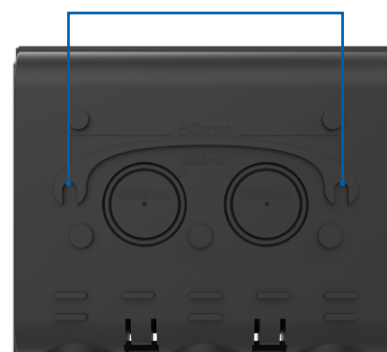
1. If the NOXBOX200 is locked closed, use a flat screwdriver to press in the tabs on the bottom to open it.
2. Secure the NOXBOX200 to a wall, a stud or any other vertical surface using suitable fixings. Use the 2 included rubber seals to cover the fixing points (to ensure IP rating is maintained).
3. If using the back entry point, drill the rear 20/25mm access holes before installing and position the NOXBOX200 over the cable (use suitable sealant to ensure IP rating is maintained).
4. Use the 4 connectors to join the desired cables. Each trio is interconnected. (E.G. Use 1st trio for "Live" wires, 2nd trio for "Earth" wires, 3rd trio for "Neutral" wires, 4th trio for line out wires).
5. When using the bottom entry points, break away the appropriate "knock-outs" by pushing them in and out.
6. Use the adjustable screw-less clamps<sup>3</sup> to secure the cables. Place the cables in the clamps and press them closed.
7. Close the NOXBOX200 lid, install the security screws for extra security.
8. Test to relevant standards.



**FRONT VIEW**  
INSTALLED NOXBOX200



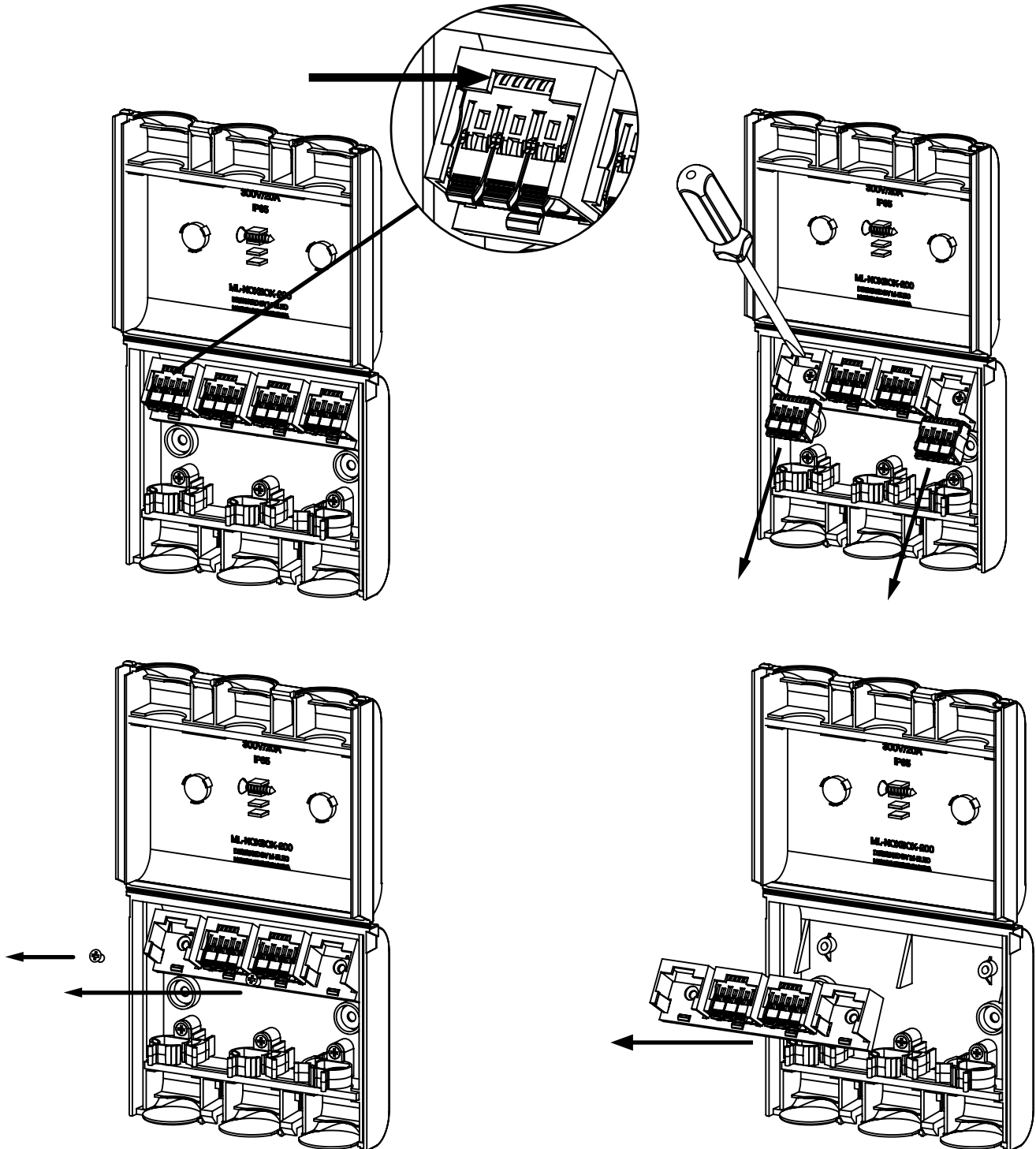
**BACK VIEW**  
80MM FIXING POINTS



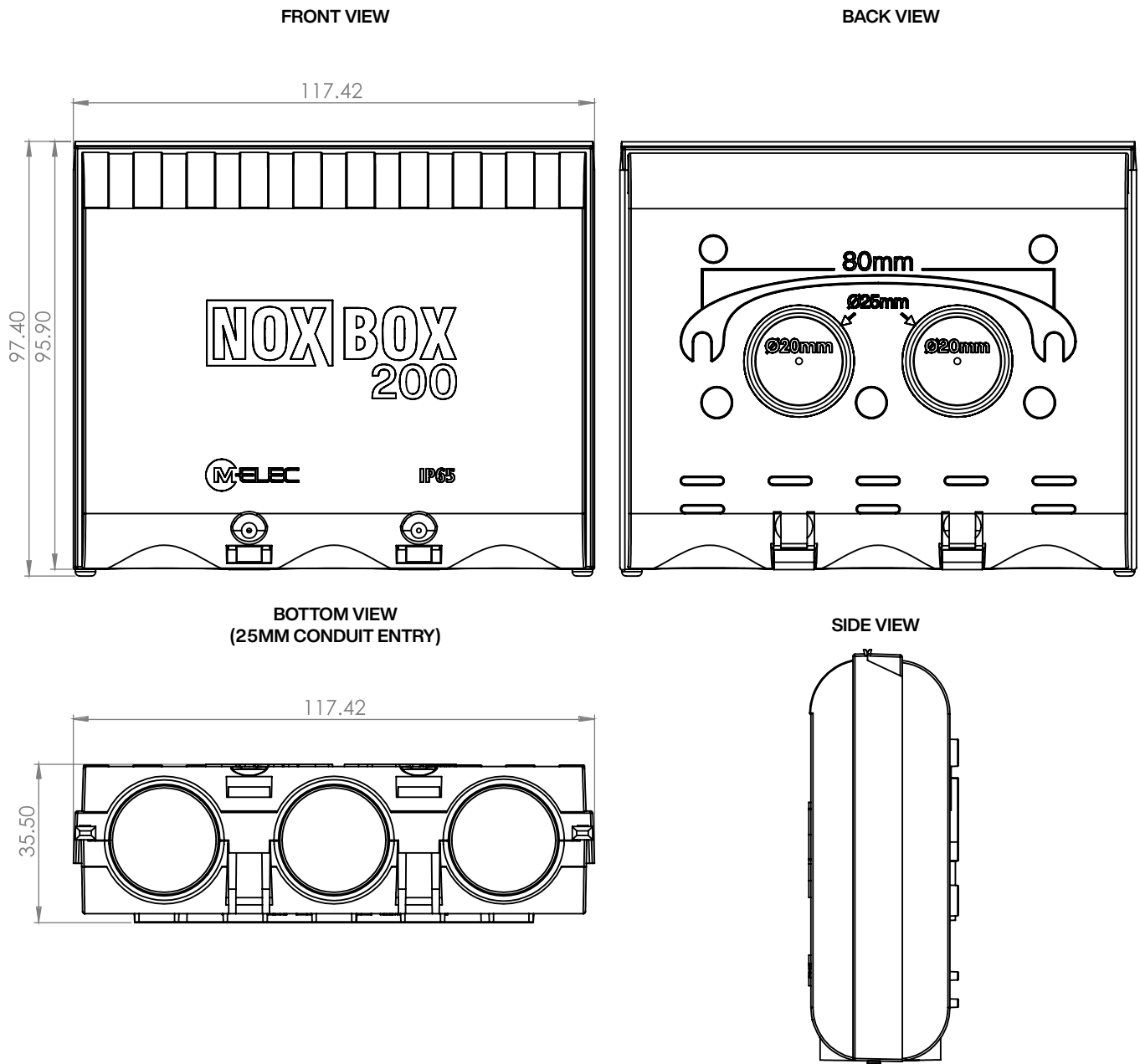
## INSTALLATION INSTRUCTIONS - CONNECTOR AND CABLE TRAY REMOVAL

In the event where the LOX connectors or the connector tray must be removed follow the instructions below:

1. Using a flat bade screw driver remove the LOX connectors on the left/right most sides on the connector tray by inserting the blade of the screw driver between the connector and the opening on the connector tray.
2. Pry the LOX connector off to access the screws securing the connector tray.
3. Using a phillips head scrw driver remove the screws securing the connector tray to the main body.
4. Remove the connector tray and the remaining LOX connectors.



## PRODUCT DIMENSIONS



### PLEASE NOTE!

#### MUST BE INSTALLED BY LICENSED ELECTRICIAN

- <sup>1</sup> To ensure that the IP rating is maintained do not remove the IP65 seals and ensure sealant is used as needed for rear entry
- <sup>2</sup> Please refer to the manufacturer's data sheet for more information on the product and compliance.
- <sup>3</sup> Clamps cannot be used as load-bearing.

**FREE**  
**ONSITE WARRANTY**

EXCLUSIVE TO  
MEMBERS ONLY



**FREE ONSITE WARRANTY FOR 3 YEARS**  
**INCLUDES PARTS & LABOUR**

---

*In conjunction with your standard product warranty*