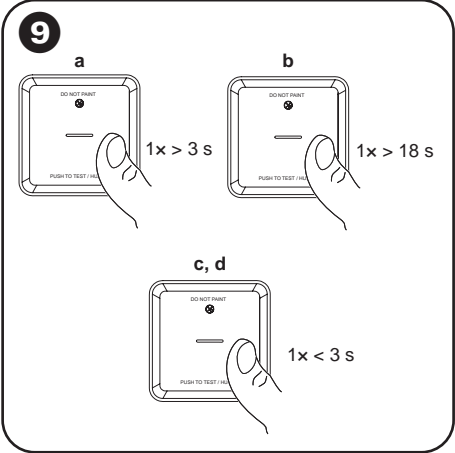
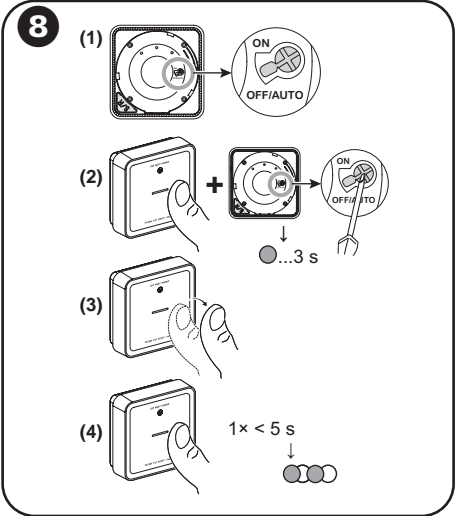
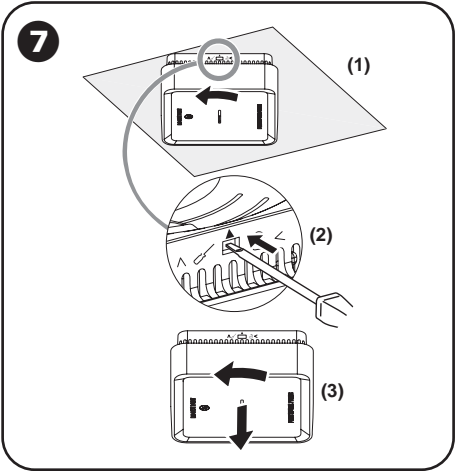
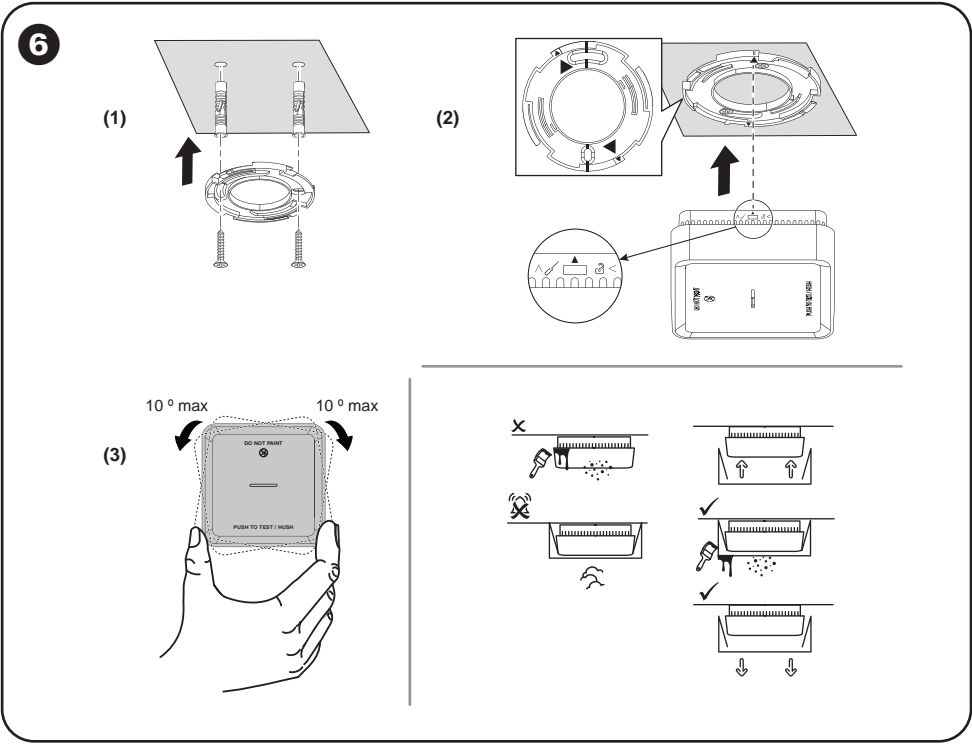
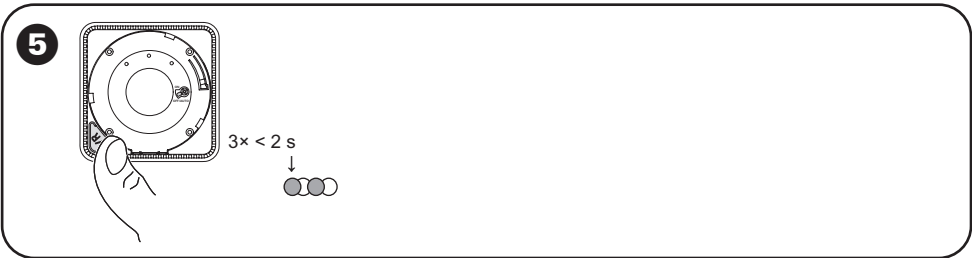
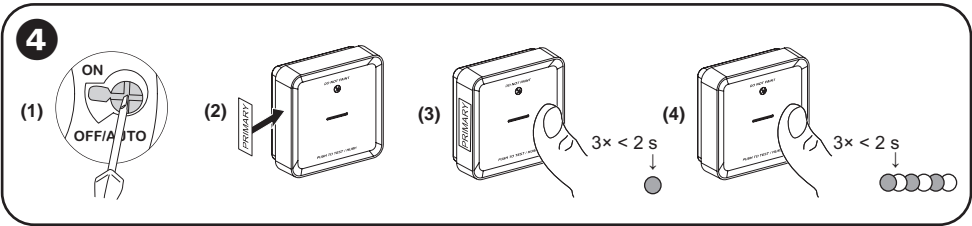
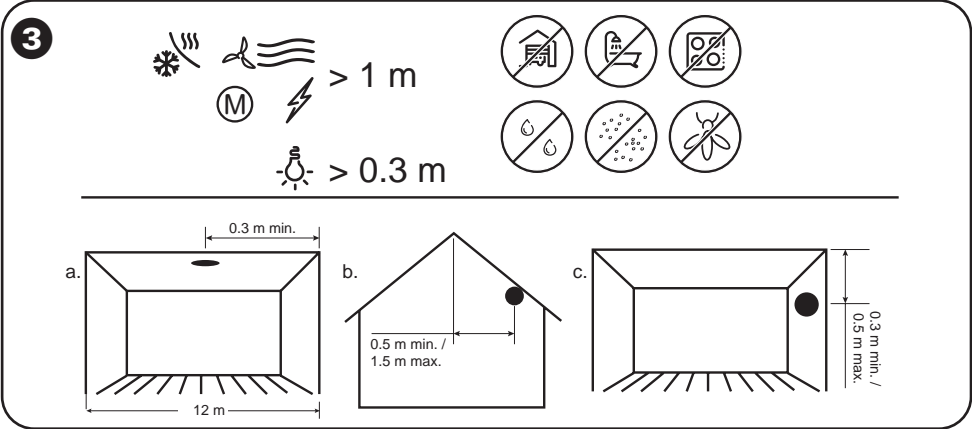
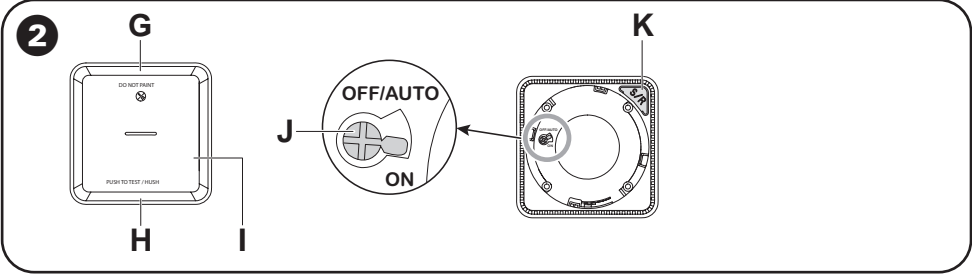
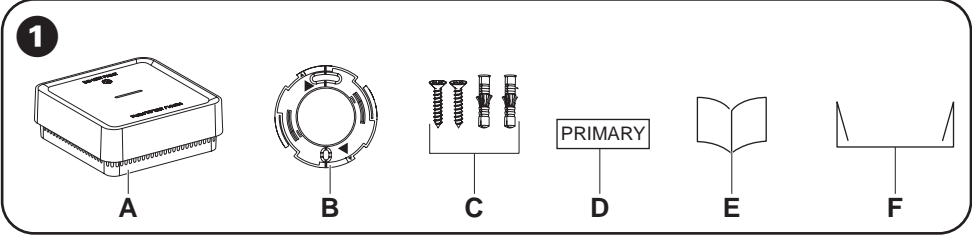


CLP599WSAL
PDL599WSAL

Wiser



Wiser Smoke Alarm Lithium Battery Square

NOTICE

EQUIPMENT INSTALLATION HAZARD

- Always operate the product in compliance with the specified technical data.
- Keep the installation instruction for the life of the product.

Failure to follow these instructions can result in equipment damage.

WARNING

SEALED BATTERY HAZARD

Do not recharge, disassemble or incinerate the battery.

Failure to follow these instructions can result in death, serious injury or equipment damage.

About this product

The Wiser Smoke Alarm Lithium Battery Square (**device**) uses a photoelectric sensor to detect smoke generated by fire and a temperature sensor that detects heat caused by rapid increase in temperature. When connected to the Wiser system, the device sends notifications to the user via the Wiser app.

1 Package contents

- A Wiser Smoke Alarm Battery
- B Mounting base
- C 2 Screws (M3.5 × 20 mm), 2 wall plugs
- D Primary label
- E Installation instructions
- F Dust cover

2 Operating elements

- G Status LED (Amber, Green and Red LED)
- H Standby LED (Red LED)
- I Test/Hush button
- J Power switch

OFF/Auto: The device turns off when it is removed from the mounting base. When mounted on the mounting base the device, it turns on automatically.

- K Setup/Reset Button

NOTICE

EQUIPMENT DAMAGE

- Do not install in garages, kitchens, bathrooms or any area with high levels of moisture, dirt or insects.
- Do not remove the dust cover until all construction work is completed. Construction dust and chemicals causes fault detection and false alarms.
- Install more than 1 m away from air conditioners/heater vents and fans, electrical sources, appliances and fittings.

Failure to follow these instructions can result in equipment damage.

The device can be installed on:

- a. Flat ceiling
- b. Inclined ceiling
- c. Wall

4 Interconnecting devices without Wiser Hub

The smoke alarms (devices) can be connected to each other via RF connections even without a Wiser Hub.

Read the following steps before to interconnect the devices without Wiser Hub.

- Turn the power switch to ON position on all devices.
- Identify a device and mark it as Primary with a label. Other devices are considered Secondary.
- Short press the Test/Hush button 3 times within 2 s on the primary device. The Standby LED turns On for 30 s once it is in pairing mode.
- Identify a secondary device and short press the Test/Hush button 3 times within 2 s. The Standby LED blinks 3 times on both primary and secondary devices. Then on the primary device the Standby LED again turns on for 30 s. Repeat step 4 on all secondary devices.

Note:

To exit from pairing mode, short press (< 0,5 s) the Test/Hush button 3 times on the primary device again. The Standby LED turns off indicating that the primary device is not in pairing mode.

5 Connecting to Wiser Hub

Short press the setup/reset button 3 times, the status LED blinks amber. Then add the device in the Wiser app by following the instructions in the app.

When multiple devices are paired to the Wiser Hub, wireless connection between the devices is created automatically.

For more information, refer to device user guide and system user guide.

6 Installing the device

- Install the mounting base on the wall or ceiling.
- Position the device on the mounting base. Ensure that the arrows on the device and mounting base are aligned.
- Rotate the device clockwise until it locks onto the mounting base.

Note: Make sure that the device is parallel to the wall, otherwise rotate and adjust it to +/- 10°.

7 Removing a device from the mounting base

- Rotate the device anti-clockwise to the end position.
- Insert a flat-headed screwdriver into the small opening of the device further to unlock it from the mounting base.
- Hold the screwdriver into the small opening and then rotate the device anti-clockwise to pull it off from the mounting base.

