



Main

Range of product	Altivar
Product or component type	EMC input filter
Range compatibility	Altivar Machine ATV340
Product compatibility	Variable speed drive ATV340 motor: 15 kW, 380...480 V Variable speed drive ATV340 motor: 11 kW, 380...480 V
Product specific application	Radio interference input filter
Mounting location	At variable speed drive side
[In] rated current	50 A
Thermal losses	8 W
Network number of phases	Three phase

Complementary

Electrical connection	Terminal 16 mm ² AWG 4
Maximum motor cable length	100 M shielded motor cable 4 kHz conforming to EN/IEC 61800-3 category C3, 380...480 V 50 m shielded motor cable 4 kHz conforming to EN/IEC 61800-3 category C2, 380...480 V
Maximum earth leakage current	7.6 mA at 400 V 50 Hz TN
Power supply voltage	380...480 V
Tolerance	10 %
Mechanical robustness	Shocks class 3M4 conforming to IEC 60721-3-3 Vibrations class 3M4 conforming to IEC 60721-3-3
Width	90 mm
Height	285 mm
Depth	170 mm
Net weight	5.2 kg

Environment

IP degree of protection	IP20mounting side by side
Relative humidity	5...95 % without condensation conforming to IEC 61800-5-1
Ambient air temperature for operation	-10...50 °C (without current derating) 50...60 °C (with current derating 1.5 % per °C)
Ambient air temperature for storage	-40...70 °C
Operating altitude	0...1000 m without current derating 1000...4000 m with current derating 1 % per 100 m
Standards	EN/IEC 61800-3

Packing Units

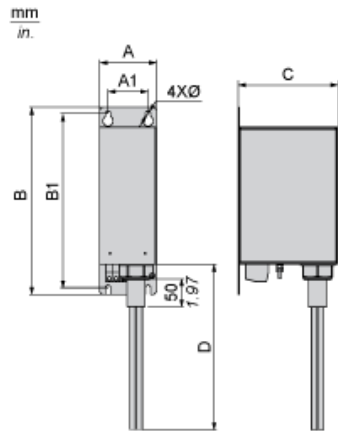
Unit Type of Package 1	PCE
Number of Units in Package 1	1
Package 1 Weight	5.94 kg
Package 1 Height	28.8 cm
Package 1 width	37.5 cm
Package 1 Length	53 cm
Unit Type of Package 2	P06

Number of Units in Package 2	4
Package 2 Weight	32.26 kg
Package 2 Height	77 cm
Package 2 width	60 cm
Package 2 Length	80 cm

Offer Sustainability

REACH Regulation	REACH Declaration
REACH free of SVHC	Yes
EU RoHS Directive	Pro-active compliance (Product out of EU RoHS legal scope) EU RoHS Declaration
Toxic heavy metal free	Yes
Mercury free	Yes
RoHS exemption information	Yes
China RoHS Regulation	China RoHS Declaration

Dimensions



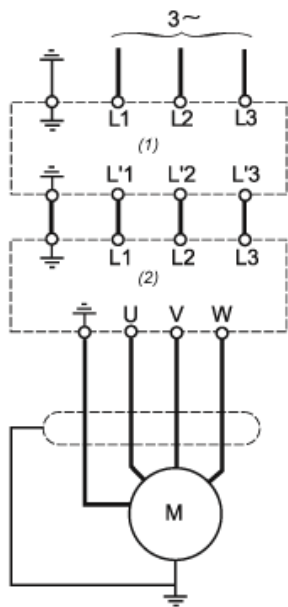
Dimensions in mm

A	B	C	D	A1	B1	Ø
90	283	165	950	70	268	5.5

Dimensions in in.

A	B	C	D	A1	B1	Ø
3.5	11.1	6.5	37.4	2.8	10.6	0.22

Recommended Schema



- (1) Filter
- (2) Drive