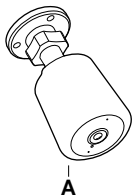


CLP724419  
PDL724419

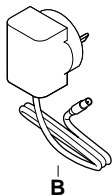


Wiser™

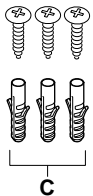
1



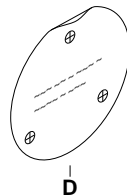
A



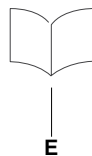
B



C

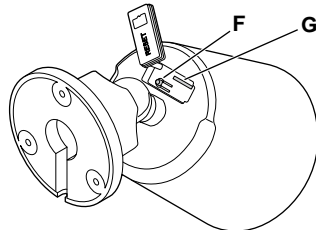
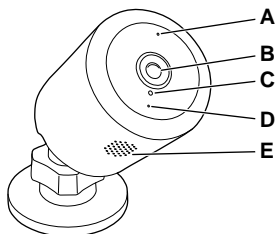


D

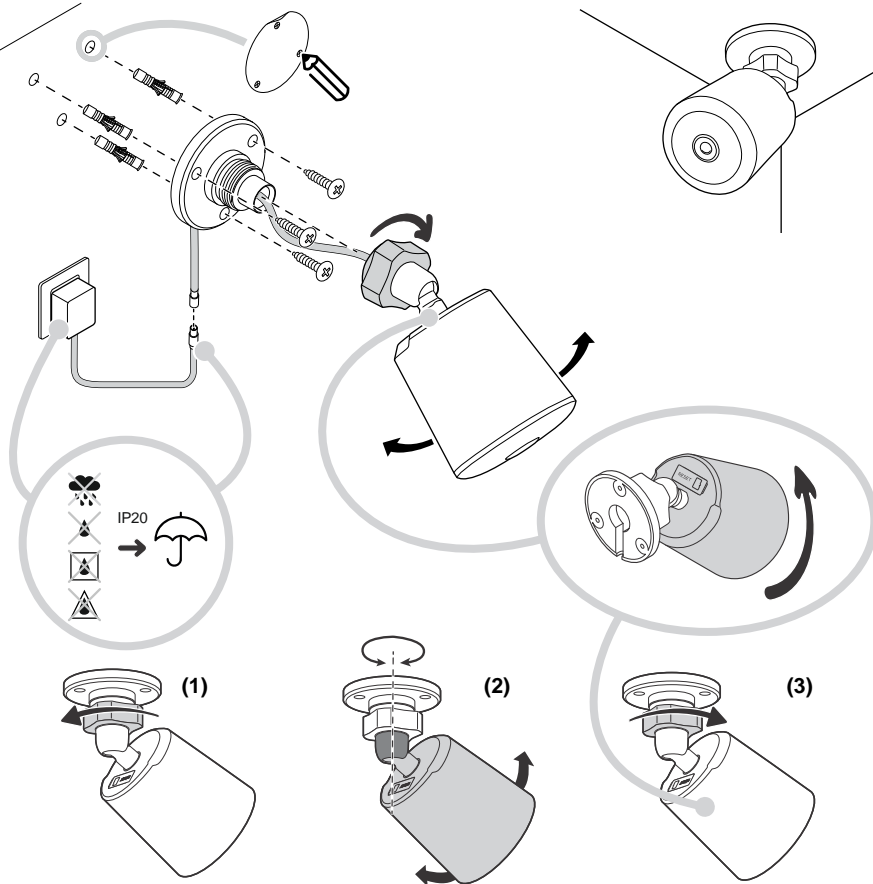


E

2



3



## Prerequisites

Download the **Wiser by SE app** to your smartphone.

## About this product

With the Wiser IP Camera Outdoor (hereinafter referred to as **IP camera**) you can monitor sensitive outdoor areas of your home. The IP camera can be triggered by other Wiser devices.

## 1 Package contents

- A IP camera
- B Power supply
- C 3 screws with wall plugs
- D Marking template
- E Installation instructions

## 2 Product details

- A Microphone
- B Lens
- C IR light sensor
- D LED indicator
- E Speaker
- F Reset button
- G Micro SD card slot

## 3 Installing the product

You can install the camera indoors or outdoors in all directions, e.g. on the wall or under a roof.

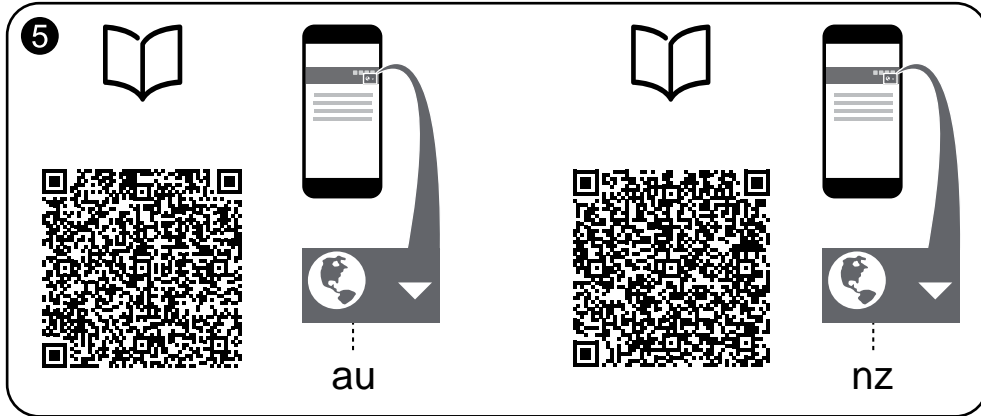
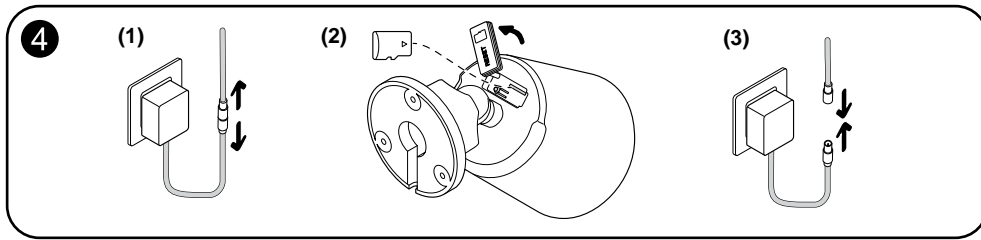
**IMPORTANT:** Users are solely responsible for adhering to applicable laws (e.g. privacy or any other relevant laws around surveillance). Users must ensure that guarantees are taken to avoid any misuse of equipment for surveillance or entirely different and unexpected purposes than intended.

### Aligning the camera

- (1) Loosen the nut on the base.
- (2) Align the camera.
- (3) Fix the nut on the base.

### NOTE:

- The protection class of the power supply and the connector is IP20. Install the power supply and the connector only indoors or in a sufficiently protected housing.
- The IP camera can come loose during assembly or adjustment. After attaching or aligning the camera, tighten it again to check it.



#### 4 Inserting a micro-SD card

You can insert a micro-SD card for local storage.

**Note:** If the IP camera is already powered on, then turn off the IP camera to insert the micro-SD card.

For playback settings, refer to the Device User Guide.

#### 5 Read the full Device User Guide online

Scan the QR code for complete information about the device, including operation, configuration and using the product with a Wiser system.

#### Technical data

Nominal voltage:	AC 100-240 V, 50/60 Hz
Power supply:	12 VDC, 1A
Power consumption:	max. 6 W
Ambient temperature:	-20 °C to +60 °C
Storage and transport temperature:	-30 °C to +85 °C
Relative humidity:	max. 95% non-condensing
<b>Protection class</b>	
IP Camera:	IP56
Power supply:	IP20
Connector:	IP20
<b>Cable length</b>	
IP camera to connector:	0.6 m
Power supply to connector:	1.5 m
Certification:	AS/NZS 62368.1:2018, EN 55032, EN 300 328 V2.2.2, EN 62311:2018, AS 2772.2:2016+A1:2018

#### Compliance

RCM:	
Max. radio-frequency power transmitted:	< 100 mW
Wi-Fi® standard:	IEEE 802.11 b/g/n 2.4 GHz
Wi-Fi® security:	WPA-PSK / WPA2-PSK
Channel bandwidth:	Support 20/40 MHz
Data security:	AES128
Resolution:	1080p
Wide angle lens:	103° horizontally 54° vertically
Night vision IR range:	10 m
Local storage support:	Micro SD card, max. 128 GB

Dispose of the device separately from household waste at an official collection point. Professional recycling protects people and the environment against potential negative effects.

#### Trademarks

- Wiser™ is a trademark and the property of Schneider Electric SE, its subsidiaries and affiliated companies.
  - Wi-Fi® is a registered trademark of Wi-Fi Alliance®.
  - Apple® and App Store® are brand names or registered trademarks of Apple Inc.
  - Google Play™ Store and Android™ are brand names or registered trademarks of Google Inc.
- Other brands and registered trademarks are the property of the relevant owners.

#### Customer care

##### Warranty information

We warrant this product for 2 years. See Warranty links below.

##### Schneider Electric (Australia) Pty Ltd

33-37 Port Wakefield Road, Gepps Cross SA 5094

**Customer Care:** 13 73 28

**Email:** [customercare.au@se.com](mailto:customercare.au@se.com)

**Warranty:** <https://www.se.com/au/en/download/document/AU-TERMS-OF-SALE/>  
[www.clipsal.com](http://www.clipsal.com)

##### Schneider Electric (NZ) Ltd

Building 6, 60 Highbrook Drive, East Tamaka, Auckland 2013

**Customer Care:** 0800 652 999

**Email:** [sales@nz.schneider-electric.com](mailto:sales@nz.schneider-electric.com)

**Warranty:** <https://www.se.com/nz/en/download/document/NZ-TERMS-OF-SALE/>  
[www.se.com](http://www.se.com)