

CLP723419  
PDL723419

Wiser™



## Prerequisites

Download the **Wiser by SE app** to your smartphone.

## About this product

With the Wiser IP Camera Indoor (hereinafter referred to as **IP Camera**) you can monitor sensitive areas of your home. The IP Camera can be triggered by other Wiser devices.

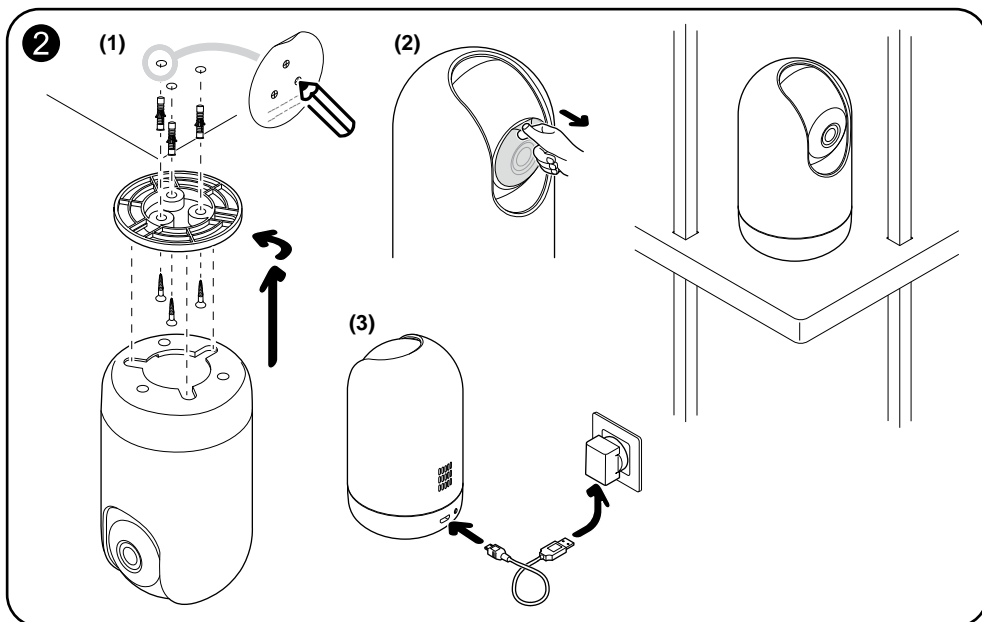
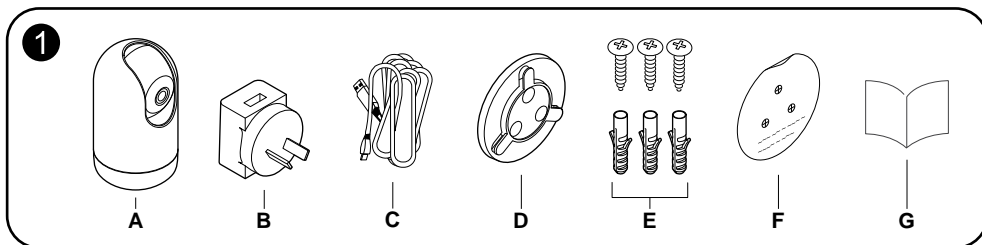
## 1 Package content

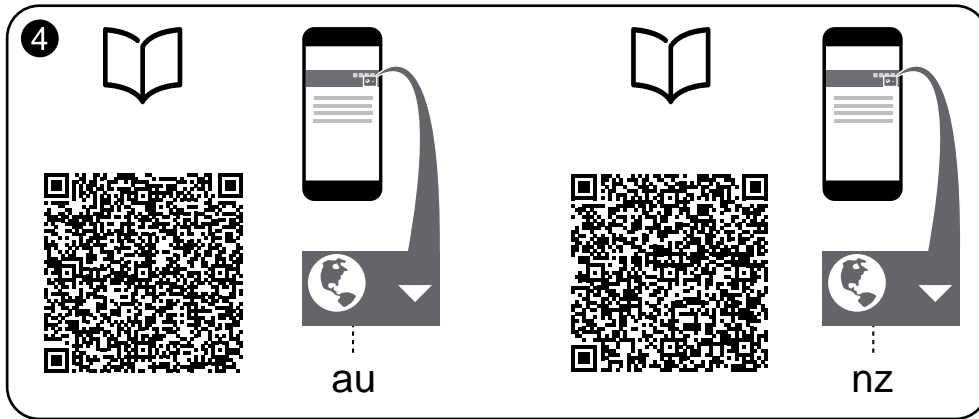
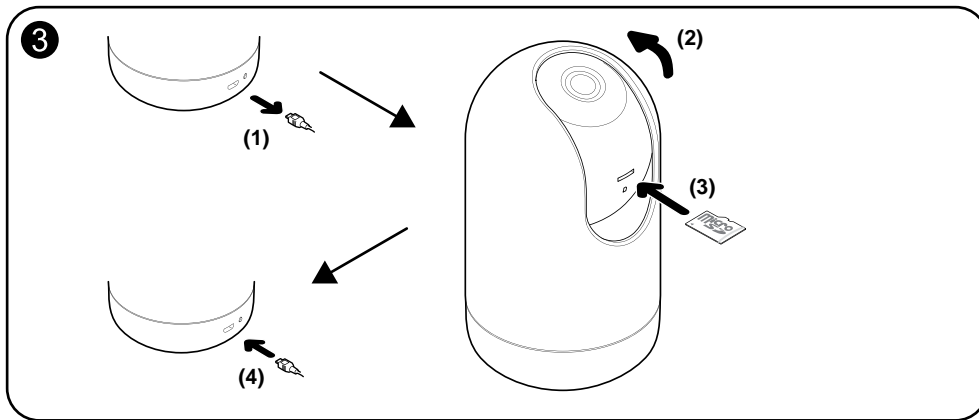
- A IP Camera
- B Power supply
- C Power supply cord
- D Mounting base
- E 3 screws with wall plugs
- F Marking template
- G Installation instructions

## 2 Installing

You can install the camera in all directions, e.g. at the ceiling or just put it on a table.

**IMPORTANT:** Users are solely responsible for adhering to applicable laws (e.g. privacy or any other relevant laws around surveillance). Users must ensure that guarantees are taken to avoid any misuse of equipment for surveillance or entirely different and unexpected purposes than intended.





### 3 Inserting a micro-SD card

You can insert a micro-SD card for local storage.

**NOTE:** If the IP camera is already powered on, then turn off the IP camera to insert the micro-SD card.

For playback settings, refer to the Device User Guide.

### 4 Reading the full Device User Guide online

**Scan the QR code** for complete information about the device, including operation, configuration and using the product with a Wiser system.



Dispose of the device separately from household waste at an official collection point. Professional recycling protects people and the environment against potential negative effects.

### Technical data

|                      |  |
|----------------------|--|
| Nominal voltage:     | AC 100-240 V, 50/60 Hz   |
| Power supply:        | DC 5 V, 2 A  |
| Power consumption:   | max. 10 W  |
| Ambient temperature: | -10 °C to 45 °C  |
| Ambient humidity:    | <95% RH  |
| Storage temperature: | -20 °C to 60 °C  |
| Certification:       | AS/NZS 62368.1:2018,<br>EN 55032, EN 300 328<br>V2.2.2, EN 62311:2018,<br>AS 2772.2:2016+A1:2018 |

### Compliance

|   |                                    |
|---|------------------------------------|
| RCM:                                    |                                    |
| Operating Frequency:                    | 2405 - 2480 MHz                    |
| Max. radio-frequency power transmitted: | < 100 mW                           |
| Wi-Fi® standard:                        | IEEE 802.11 b/g/n 2.4 GHz          |
| Wi-Fi® security:                        | WPA-PSK / WPA2-PSK                 |
| Channel bandwidth:                      | Support 20/40 MHz                  |
| Data security:                          | AES128                             |
| Resolution:                             | 1080p                              |
| Wide angle lens:                        | 80° horizontally<br>40° vertically |
| IR range:                               | 7 m                                |
| Pan angle:                              | 0° to 340°                         |
| Tilt angle:                             | -75° to 75°                        |
| Local storage support:                  | Micro SD Card, max. 128 GB         |

### Trademarks

- Wiser™ is a trademark and the property of Schneider Electric SE, its subsidiaries and affiliated companies.
  - Wi-Fi® is a registered trademark of Wi-Fi Alliance®.
  - Apple® and App Store® are brand names or registered trademarks of Apple Inc.
  - Google Play™ Store and Android™ are brand names or registered trademarks of Google Inc.
- Other brands and registered trademarks are properties of their relevant owners.

### Customer care

#### Warranty information

We warrant this product for 2 years. See Warranty links below.

#### Schneider Electric (Australia) Pty Ltd

33-37 Port Wakefield Road, Gepps Cross SA 5094

**Customer Care:** 13 73 28

**Email:** [customercare.au@se.com](mailto:customercare.au@se.com)

**Warranty:** <https://www.se.com/au/en/download/document/AU-TERMS-OF-SALE/www.clipsal.com>

#### Schneider Electric (NZ) Ltd

Building 6, 60 Highbrook Drive, East Tamaka, Auckland 2013

**Customer Care:** 0800 652 999

**Email:** [sales@nz.schneider-electric.com](mailto:sales@nz.schneider-electric.com)

**Warranty:** <https://www.se.com/nz/en/download/document/NZ-TERMS-OF-SALE/www.se.com>