



Connected Single Socket Outlet
BLE Default Mode

O3015T
PDLO394CS

Iconic® Connected Module

1 Follow the installation instructions

To change default device settings:

2 Download the Wiser™ by SE App

3 Connect the Iconic device

4 Configure the Iconic device



Customer care

Warranty information

We warrant this product for 2 years. See **Warranty** links below.

Schneider Electric (Australia) Pty Ltd
33-37 Port Wakefield Road, Gepps Cross SA 5094
Customer Care: 13 73 28

Email: customercare.au@se.com

Warranty:
<https://www.se.com/au/en/about-us/legal/terms-and-conditions.jsp>
www.se.com

Schneider Electric (NZ) Ltd
Building 6, 60 Highbrook Drive, East Tamaka, Auckland 2013

Customer Care: 0800 652 999
Email: sales@nz.schneider-electric.com

Warranty:
<https://www.se.com/nz/en/about-us/legal/terms-and-conditions.jsp>
www.se.com

For your safety

⚠️ ⚠️ DANGER

HAZARD OF ELECTRIC SHOCK, EXPLOSION, OR ARC FLASH

- It is illegal for persons other than an appropriately licensed electrical contractors or other persons authorised by legislation to work on the fixed wiring of any electrical installation.
- To comply with all safety standards, the device must be used only for the purpose described in this instruction and must be installed in accordance with the wiring rules and regulation in the location where it is installed.
- Lock out and tag the input circuit before accessing the wiring connections.
- There are no user serviceable parts inside the device.

Failure to follow these instructions will result in death or serious injury.

⚠️ CAUTION

EQUIPMENT DAMAGE HAZARD

- Install the device according to instructions in this document.
- Pay attention to the specifications and wiring diagrams related to the installation.
- Do not use this product for any other purpose than specified in this instruction.
- Dropping the device may damage the device. Check device operates after being dropped or if physical damage is shown.
- Do not connect additional sockets to the module.
- See wiring diagram for looping to other sockets.

Failure to follow these instructions can result in injury or equipment damage.

NOTICE

EQUIPMENT DAMAGE HAZARD (LOAD AND OPERATION)

- Operation of units at elevated temperatures or voltages outside of specification (250 V a.c. and 50 °C) may cause the over-temperature protection circuitry to operate. Operating with significant overload may activate thermal shut-down.
- Do not operate the device for prolonged periods in extreme conditions.

Failure to follow these instructions can result in equipment damage.

NOTICE

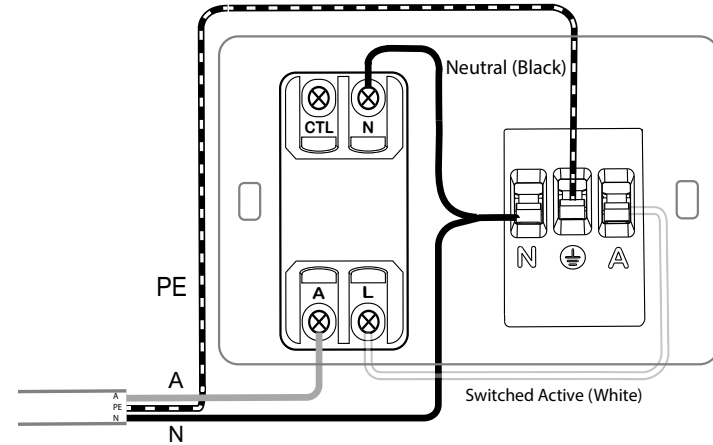
MAXIMUM LOAD RATINGS APPLY

Ensure that the number of low voltage lighting transformers connected to a single device does not exceed the maximum load rating of the device.

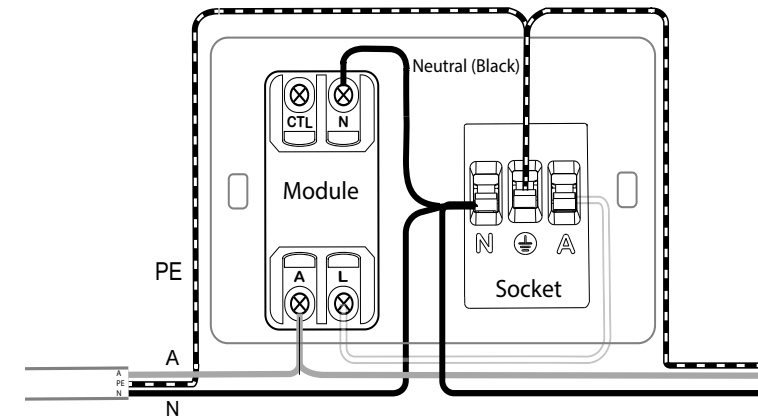
Failure to follow these instructions can result in equipment damage.

Cabling and connections

Single socket within a circuit or socket at the end of a circuit



Socket looped to other sockets within the circuit



Note: Use Module A terminal to loop out, as shown in diagram. **Do not loop out from the Socket A terminal.**



General information

The Connected Socket Outlet operates as a switch and a switched socket outlet 'out-of-the-box', with no configuration needed.

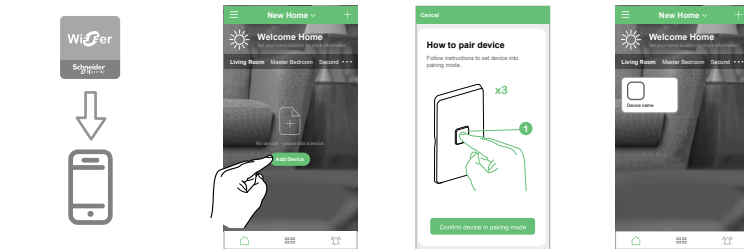
The connected switched socket can optionally be configured as a delay timer/run-on timer, and features a scheduler function. The push button switch LED indicator behaviour can also be configured, if desired.

Tip: It is recommended to set the LED behaviour to **On when load is On** — see *Setting the LED indicator behaviour*.

Note: The connected switched socket must be paired with a mobile phone and the Wiser™ by SE App in order to perform these tasks.

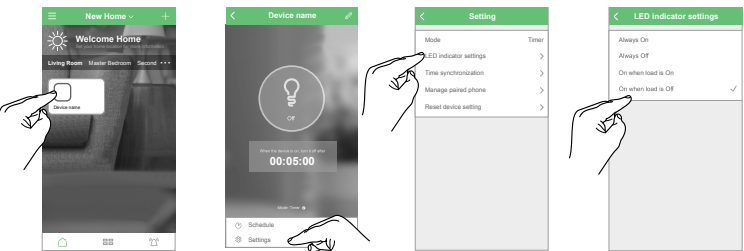
Pairing

Note: When pairing the connected switched socket with the Wiser™ by SE App, be in the same room and within a range of 8 to 10 m of the module. Range can be affected by walls and other structures.



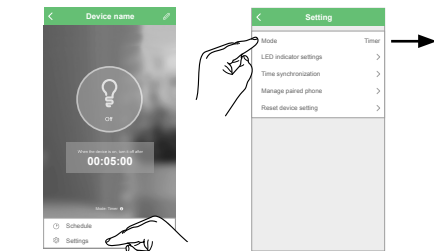
- 1 Install the Wiser™ by SE App on your mobile phone and register an account.
- 2 Tap **Add Device** in the Home page and select the module.
- 3 Follow the animated instruction to pair the module.
- 4 Module is paired to the App and displayed in the Home page.

Setting the LED indicator behaviour



- 1 Tap the module in the Home page.
- 2 Tap **Settings** in the module's device page.
- 3 Tap **LED indicator settings** in the device setting page.
- 4 Tap the desired behaviour in the list (default behaviour: **On when load is Off**).

Setting the mode and timer type



- 1 Tap **Settings** in the module's device page.
- 2 Tap **Mode** in the device setting page and choose from the available options.

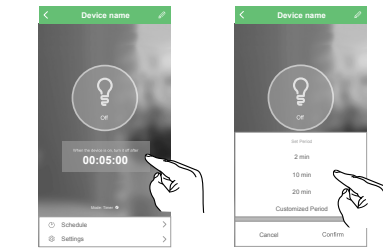
Switch: Timer feature is disabled.

Delay timer: When the outlet is switched On using the push button, power to the outlet is automatically removed when the timer interval expires.

(Run-on timer option): When the outlet is On and then switched Off using the push button, power is maintained to the outlet for the duration of the timer interval and then removed.

Note: If a delay timer is running when a scheduler event (switch On or switch Off) is actioned, the delay timer is cancelled.

Setting the timer interval



- 1 Tap the timer display in the module's device page.
- 2 Select a time interval from the available options, then tap **Confirm**.

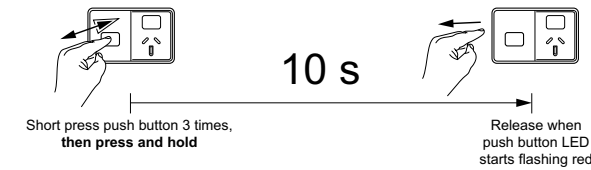
Setting the scheduler



Tap **Schedule** in the module's device page and follow the steps in the App.

Restoring the connected switched socket to factory defaults

Note: All customised settings and Bluetooth pairing information will be lost.



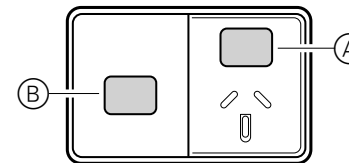
Operating the connected switched socket

Non-connected mode

1. Turn switch (A) on.
2. Short press push button (B) to toggle power to the socket On or Off.

Connected Mode

1. Pair the connected switched socket and set the mode, timer type, interval and scheduler using the Wiser™ by SE app.
2. Turn switch (A) on. You can now operate the connected switched socket using the Wiser™ by SE app. (See the Wiser™ System User Guide for details.)



Tip: In connected mode, you can still short press push button (B) to toggle power to the socket On or Off.

Note: The LED indicator in the push button (B) may be difficult to see when On in daylight.

Preparing the connected switched socket for use with Wiser™ Hub

The connected switched socket can be used as a device in a Wiser™ Hub network. The connected switched socket must first be changed from BLE mode to Zigbee® mode.

For information on using the connected switched socket with the Wiser™ Hub, refer to the Wiser™ System User Guide.

Technical data

Note: See product datasheet for full specifications. Specifications typical at 25 °C

Operating voltage / current	10 A, 250 V a.c., 50 Hz	
Switching technique	Connected Module: Relay	
	Socket: Electromechanical (override)	
Protection	Over temperature:	Yes
	Short circuit:	No
	Over-current fuse:	No
	Thermal protection:	Yes
Design	3-wire	
LED indicator	Yes	
Supported protocols	BLE (default), Zigbee	
Colour	BK-Black, XW-Extra White	
Compliance		
Power failure data retention	Internal date/time retained for at least 6 hrs. Settings preserved indefinitely.	
Environmental rating	IP54 (0 °C to +50 °C)	
Operating humidity	5%–90% RH, non-condensing	
No user serviceable parts inside		

Load compatibility

Resistive load (e.g. incandescent lighting)	10 A
MV halogen load	
Electronic LV lighting transformers	
LED lighting drivers	
Linear fluorescent ballasts	6 A @ 0.6 PF
Inductive load (e.g. exhaust fan)	
M-rating	M40

Disclaimer

Schneider Electric reserves the right to change specifications, modify designs and discontinue items without incurring obligation and whilst every effort is made to ensure that descriptions, specifications and other information in these instructions are correct, no warranty is given in respect thereof and the company shall not be liable for any error therein.

© Schneider Electric 2021

This material is copyright under Australian, New Zealand and international laws. Except as permitted under the relevant law, no part of this work may be reproduced by any process without prior written permission of and acknowledgment to Schneider Electric.

Android is a trademark of Google Inc.

Apple is a trademark of Apple Inc., registered in the U.S. and other countries.

Wiser™ is a trademark and the property of Schneider Electric SE, its subsidiaries and affiliated companies.

Zigbee® is a registered trademark of the Zigbee® Alliance.