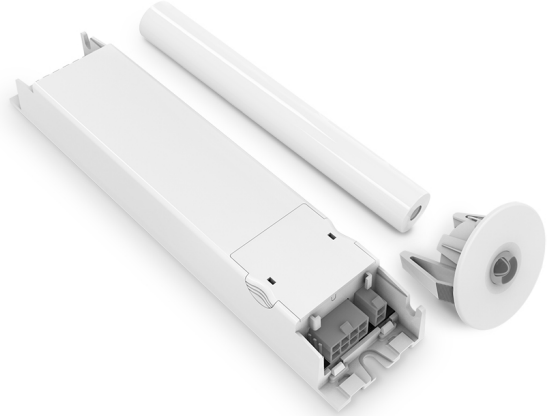


# LED FIRE INBUILT

Emergency Kit for OEM



## ORDERING INFORMATION

<b>Order code</b>	17570
<b>Description</b>	Ledfire Pro OEM Kit D32 White
<b>Driver Type</b>	DALI DT1 Emergency
<b>Item Code</b>	EV-LEDFIRE-OEM-PRO

## MECHANICAL

<b>Body Material</b>	Polycarbonate
<b>Fitting Colour</b>	White
<b>Installation Type</b>	Recessed
<b>IP Rating</b>	IP20

## ELECTRICAL

<b>Electrical Rating</b>	Class II
<b>Input Frequency</b>	50 Hz
<b>Input voltage</b>	230Vac

In Australia the Input voltage is defined as 230Vac -6%/+10%. This effectively means that the voltage range of these products are 216Vac - 253Vac or 240V +6%

<b>Maximum Wattage</b>	2 W
<b>Standby Power</b>	0.25 W

Standby power for non-maintained/switched maintained emergency devices is measured when the light is off and the charger is in standby mode. For maintained emergency devices, standby power is measured when the light is on and the charger is in standby mode. Typically, charging occurs for the first 16 hours after the device is powered or after a battery discharge.

<b>Working Temp Range</b>	0 to 40 °C
---------------------------	------------

## LAMP

<b>Lamp/LED Current</b>	130 mA
<b>Lamp/LED voltage</b>	9 V

## DRIVER

<b>Driver Included</b>	Yes
<b>Driver Type</b>	DALI DT1 Emergency
<b>Wiring Type</b>	Re-wireable terminal block (5 pin)

## EMERGENCY (EM SUFFIX)

<b>Replacement Battery Code</b>	01302
<b>Emergency Classification</b>	C0:D32, C90:D32
<b>Emergency Control</b>	DALI Monitored (DT1)
DALI Monitored ~ Supports Emergency test and monitoring over DALI (IEC62386) with full compliance to IEC62386-202.	
<b>Emergency Duration</b>	90 mins
<b>Emergency Lumen Output</b>	208 lm
<b>Emergency Mode</b>	Non-Maintained
<b>Emergency Output Power</b>	1200 mW

## COMPLIANCE

**Product Design Life** 12 years

The product design life relates to the total product life which includes LEDs, drivers and the enclosure. This is different to the LED lifetime which only refers to the economical lifetime of the LEDs at which time the lumen output has dropped below the L Value. The product design life is calculated at the maximum ambient or working temperature of the product and takes into account the Daily Use.

**Standards** AS/NZS 60598.1  
AS 60598.2.22  
AS/NZS 61347.1  
AS/NZS 61347.2.13  
AS CISPR 15  
AS/NZS 2293.3

## WARRANTY

**Commercial Use Warranty** 8 RTB (Total 8 Years)

## DIMENSIONS

**Cutout** 44 mm

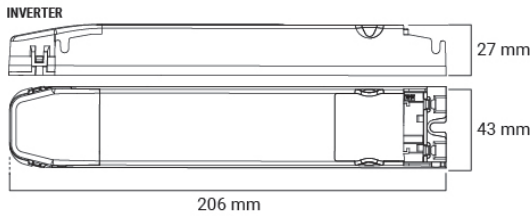
**Product Diameter** 56 mm

**Product Height** 48 mm

## LINE DRAWINGS

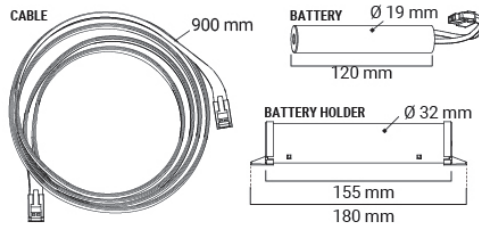
### EV/LEDFIRE/OEM/PRO/2

#### EV-LEDFIRE-OEM-INVERTER



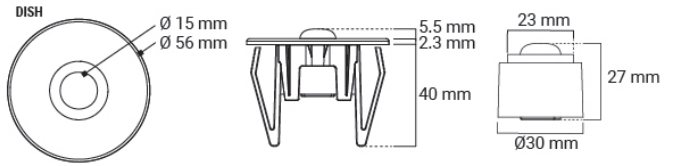
### EV/LEDFIRE/OEM/PRO/3

#### EV-LEDFIRE-OEM-BATTERY



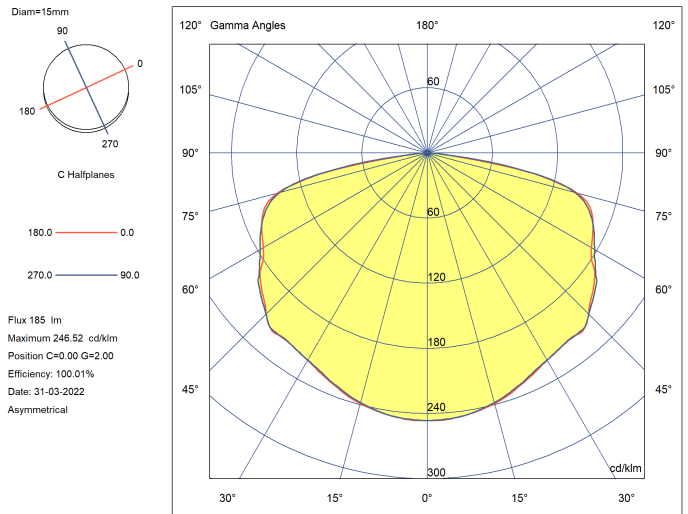
### EV/LEDFIRE/OEM/PRO/1

#### EV-LEDFIRE-OEM-MODULE



## PHOTOMETRICS

### EV/LEDFIRE/OEM/PRO



## ACCESSORIES

**Order code** 17574

**Description** Ledfire Pro OEM Kit Flex&Plug with terminals and covers (F&P and covers only)

**Item Code** EV-LEDFIRE-OEM-PRO-F&P



<b>Order code</b>	17568
<b>Description</b>	Ledfire OEM junction Box Mount - White
<b>Item Code</b>	EV-LEDFIRE-OEM-PRO-JB
<b>Order code</b>	17569
<b>Description</b>	Ledfire OEM Surface Mount - White
<b>Item Code</b>	EV-LEDFIRE-OEM-PRO-SM