

Electrical bracket C-type wallboard clip

Characteristics

Thickness (mm): **0.8**

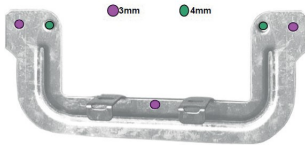
Length (mm): **115**

Width (mm): **49**

Depth (mm): **12**



Thickness	Length	Width	Depth
0.8mm	115mm	49mm	12mm



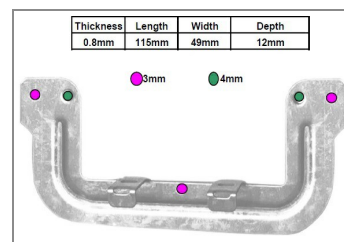
GENERAL INFORMATION

- Description**
Device support type C.
- Technical details**
Pre-galvanized steel.

- Application(s)**
Used to support switches and wall plate into wallboard.

ADDITIONAL INFORMATION

Length : 115 mm.
Width : 49 mm.
Depth : 12 mm.
Thickness : 0.8 mm.



LOGISTIC INFORMATION

Packaging



Carton box

Height (cm) : 10.5
 Length (cm) : 13.6
 Depth (cm) : 13.6
 Net weight (kg) : 1.08
 Gross weight (kg) : 1.13



Outer package 1



x 10

Carton box

Height (cm) : 12.5
 Length (cm) : 70
 Depth (cm) : 29
 Net weight (kg) : 11.3
 Gross weight (kg) : 11.8



Outer package 2



x 360

Pallet

Height (cm) : 125
 Length (cm) : 120
 Depth (cm) : 80
 Net weight (kg) : 424.8
 Gross weight (kg) : 430.8

