

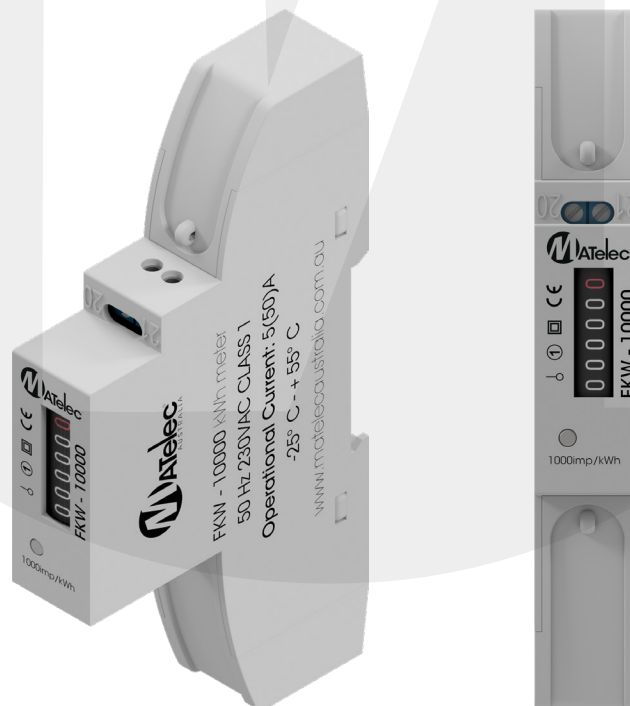
## SINGLE PHASE

### FEATURES & BENEFITS

- For single phase direct metering
- Super compact slimline design
- 1 year warranty
- **Note** - Not suitable for solar applications

### SPECIFICATIONS

Materials:	Case - PBT, PC Hook - ABS
Weatherproof rating:	IP51
Display:	Analogue counter, 5+1 = 00000.9kWh
Accuracy class:	Class 1
Operational current range:	5A - 50A
Nominal voltage:	230V ± 20%
Operating frequency:	50Hz
Starting current:	Below 0.004lb
Maximum cable capacity:	1 Phase: 10mm <sup>2</sup> (neutral 10mm <sup>2</sup> )
Temperature range:	-25°C - +55°C
Power consumption:	≤8VA ≤ 0.4W
Impulse indication:	Flashing red
Impulse constant:	1000imp/kWh
Pulse output:	Voltage - 12~27V Current - ≤27mA Max length of lead - 20m Impulse width - 90ms Connect to terminals 20 & 21 Limit of values - Max 60VCD, max 50mA
Conforms to:	EN50470-3:2006, IEC62052-11, IEC62053-21
Dimensions:	120mm (W) x 63mm (H) x 18mm (H)



Code	Description	Packing	MOQ	Ctn
FKW-10000	KWH Meter - Din Rail Mount - Direct Electronic 0-50A - Single Phase	1	1	10