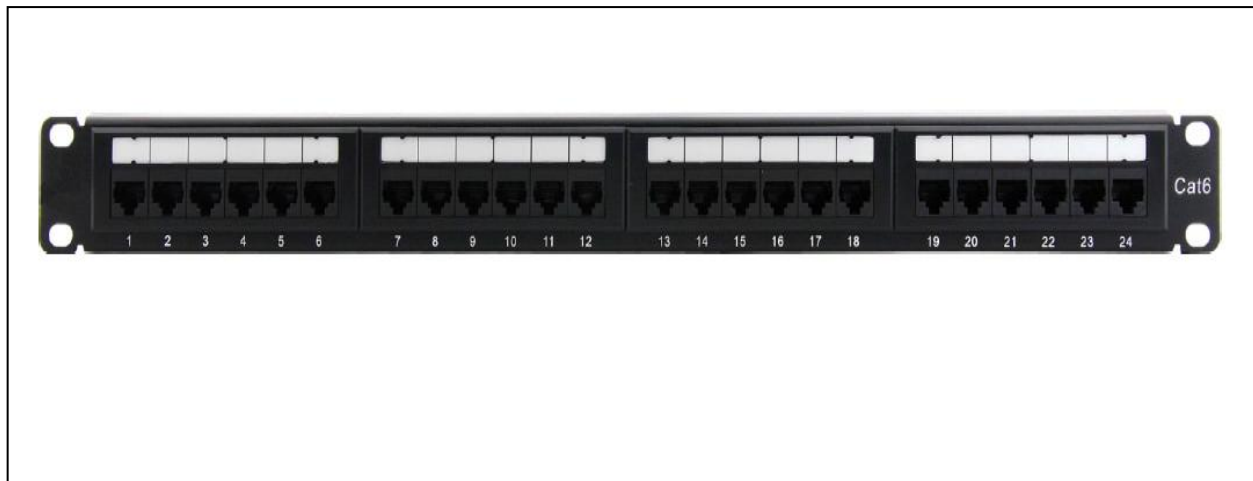
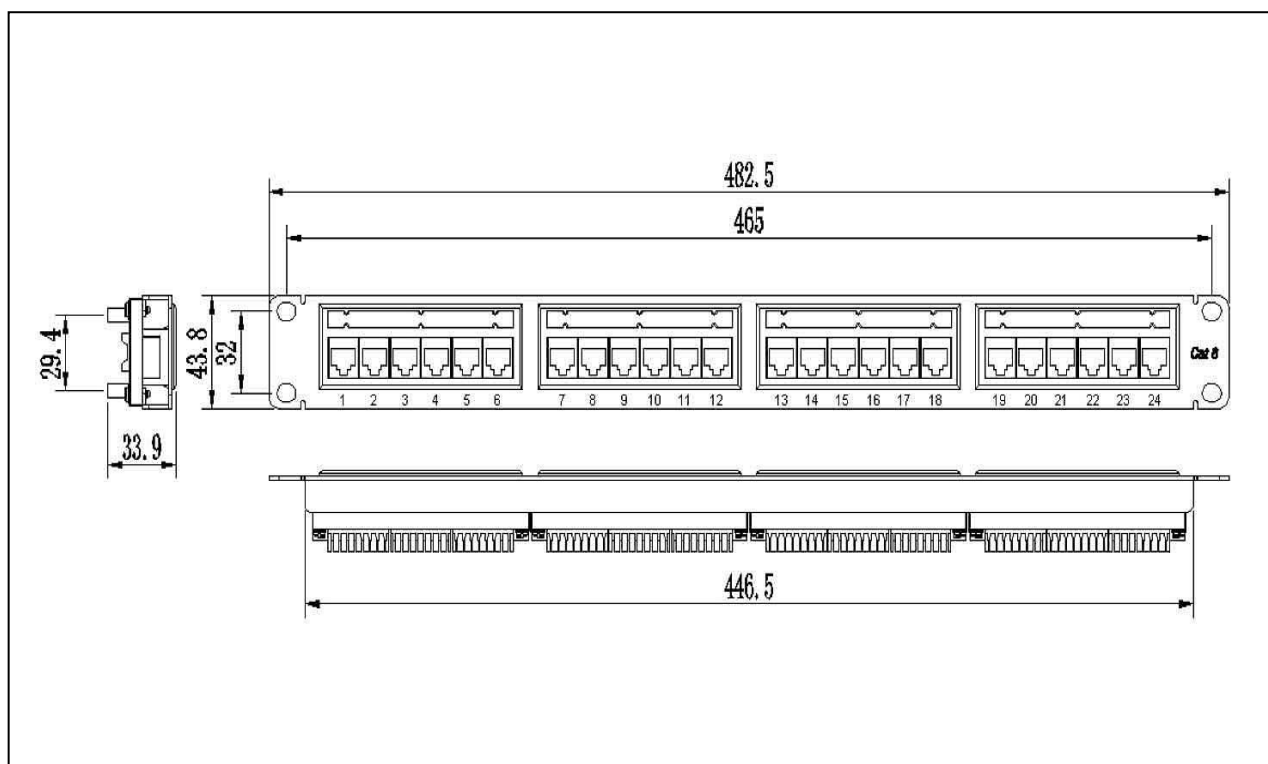


[LPD124-C6U]



[Product Structure Diagram]



[Product Description]

- CAT6 UTP 24-port patch panel, 110 type, matches and exceeds CAT6 350MHZ connecting hardware specifications, comply with Gigabit Ethernet applications, suitable for interaction and termination of horizontal cabling between devices, equipment and centralized points.

[Technical Characteristics]

- Unique exterior design, simple and useful,
- High strength die-casted zinc alloy shielding design meets the industry shielding standards,
- 110 krone punch down tools are available,
- Solid and corrosion phosphor bronze IDC enables over 250 terminations,
- With 50 μ ” gold plate, durability is 1500 matching recycles,
- Be compatible with 19-inch equipment racks, cabinets and wall mount shelf,
- With cable management in the rear for effective guidance of cables and termination points,

Description	Parameter
Contact resistance(max)	100m Ω
Insulation resistance (min)	500M Ω
Return loss (dB)	5.8dB

[Packaging]

PART #	Description	Color	Inner Box	Outer Box	CTN SIZE(L*W*H)	Weight
LPD124-C6U	Cat6 UTP 24 ports patch panel	Black	1PCS	10PCS	53.5*31.3*23.4	8.2kg



电缆识别名: LPD124-C6U

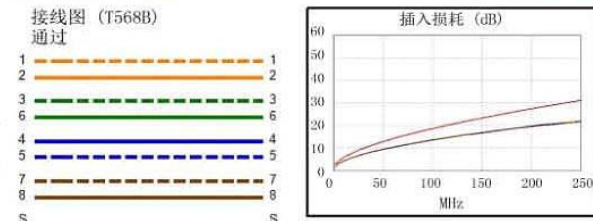
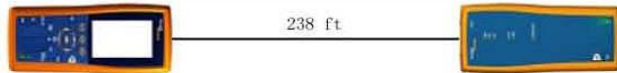
测试总结果: 通过

日期 / 时间: 03/15/2015 01:52:30 PM
 余量 6.3 dB (NEXT 36-78)
 测试限: TIA Cat 6 Perm. Link
 电缆类型: Cat 6 UTP
 校准日期: 06/08/2010

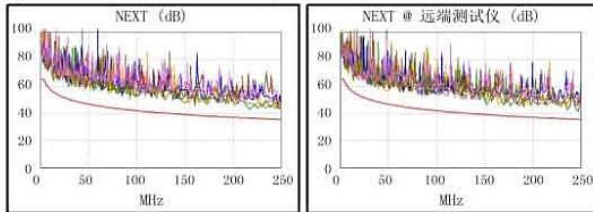
操作人员: Your Name
 软件版本: 2.7400
 测试限版本: 1.9300
 NVP: 69.0%

型号: DTX-1800
 主机 S/N: 1342547
 远端 S/N: 1342548
 主机适配器: DTX-PLA002
 远端适配器: DTX-PLA002

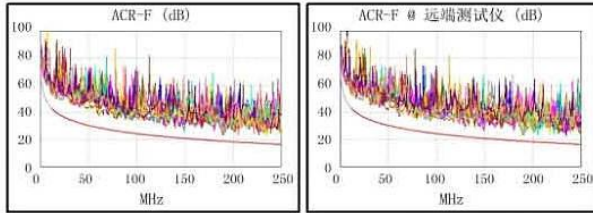
长度 (ft), 极限值 295	[线对 36]	238
传输时延 (ns), 极限值 498	[线对 78]	362
时延偏离 (ns), 极限值 44	[线对 78]	11
电阻值 (欧姆)	[线对 12]	10.6
插入损耗 余量 (dB)	[线对 45]	9.1
频率 (MHz)	[线对 45]	250.0
极限值 (dB)	[线对 45]	31.1



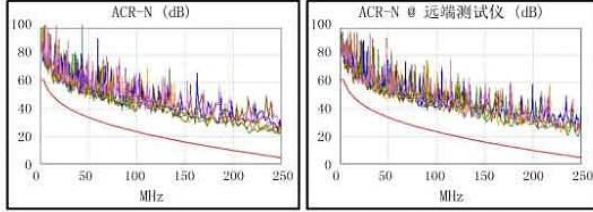
	最差余量		最差值	
	主机	SR	主机	SR
通过				
最差线对	36-78	12-45	12-36	12-45
NEXT (dB)	6.3	6.3	6.8	6.3
频率 (MHz)	171.5	246.5	250.0	246.5
极限值 (dB)	38.0	35.4	35.3	35.4
最差线对	36	12	12	45
PS NEXT (dB)	7.1	7.0	7.2	7.0
频率 (MHz)	172.5	236.0	250.0	245.0
极限值 (dB)	35.4	33.1	32.7	32.9



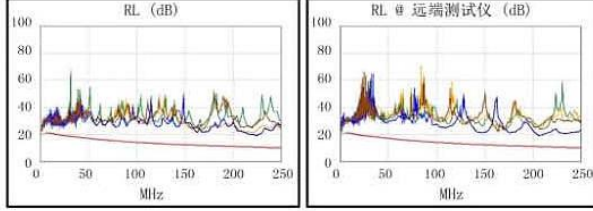
	最差余量		最差值	
	主机	SR	主机	SR
通过				
最差线对	45-36	36-45	45-36	36-45
ACR-F (dB)	4.7	4.4	4.7	4.4
频率 (MHz)	189.5	189.5	189.5	189.5
极限值 (dB)	18.6	18.6	18.6	18.6
最差线对	45	45	12	12
PS ACR-F (dB)	6.6	6.5	7.5	8.4
频率 (MHz)	205.0	189.5	235.0	236.0
极限值 (dB)	15.0	15.6	13.8	13.7



	不适用		不适用	
	主机	SR	主机	SR
通过				
最差线对	36-78	36-78	12-36	12-45
ACR-N (dB)	10.5	10.2	16.4	15.5
频率 (MHz)	13.8	13.6	250.0	246.5
极限值 (dB)	49.1	49.2	4.2	4.6
最差线对	45	78	12	45
PS ACR-N (dB)	11.4	11.2	16.4	16.4
频率 (MHz)	12.5	13.6	250.0	245.0
极限值 (dB)	47.7	46.9	1.6	2.1



	通过		通过	
	主机	SR	主机	SR
通过				
最差线对	45	78	45	45
RL (dB)	6.4	7.2	8.2	8.2
频率 (MHz)	22.3	5.6	224.5	206.0
极限值 (dB)	19.3	21.0	10.5	10.9



满足的标准:

10BASE-T	100BASE-TX	100BASE-T4
100BASE-T	ATM-25	ATM-51
ATM-155	100VG-AnyLan	TR-4
TR-16 Active	TR-16 Passive	

LinkWare 版本 9.1

项目: DEFAULT
2015.03.07.flw

地点: Client Name

