

Catalogue No: **P400-E-3-400-TM**

TBP MCCB 400 FRAME 25kA 3P 400A ADJ THERM ADJ MAG

Power Distribution and Protection > Circuit Breakers > Moulded Case Circuit Breakers > TemBreak PRO Moulded Case Circuit Breaker > TemBreak PRO 400 AF > 3 Pole



Representative Photo Only
(actual product may vary based on configuration selections)

- General purpose power distribution, motor starting as well as energy metering and communications
- Current limiting device, reduces fault let through energy for increased installation safety
- Direct opening and indication of main contact status – maximising machine and user safety
- Complies to AS / NZS 60947-2, IEC 60947-2 and CE
- Panel mount standard, with other mounting options
- 3 or 4 pole versions
- Suits XCP chassis, with panelboard options
- Fault ratings; 25, 36, 50, 70, 110, 125 or 200 kA
- Trip unit options include Thermal magnetic or electronic types

SPECIFICATIONS

| | |
|---|--|
| Switching Poles | 3P |
| Utilisation Category | A |
| Component Type MCCB | MCCB AC |
| Model | P |
| Frame Size | 400 AF size |
| Rated Frequency | 50 / 60 Hz |
| Connection Mode | Cable Tunnel Clamp (Option) Extension Bar (Option) Front Connection Plug-in PM (Option) Plug-in UPX (Option) Rear Connection (Option) |
| Suitable for Distribution Switchboard or MCC | Yes |
| Trip Unit Rating | 400 A |
| Trip Unit Protection Type | Adjustable Thermal Adjustable Magnetic |
| Ue, Rated Operational Voltage, AC, max | 690 V AC |
| Utilisation Voltage (min - max) | 24 V AC to 690 V AC, 250 V DC |
| Uimp, Impulse Withstand Voltage | 8 kV |
| Ui, Rated Insulation Voltage | 800 V (rms) |
| In, Rated Current at 30°C | 400 A @30°C |
| In, Rated Current at 35°C | 400 A @35°C |
| In, Rated Current at 40°C | 400 A @40°C |
| In, Rated Current at 45°C | 400 A @45°C |
| In, Rated Current at 50°C | 400 A @50°C |
| In, Rated Current at 55°C | 400 A @55°C |
| In, Rated Current at 60°C | 369 A @60°C |
| In, Rated Current at 65°C | 358 A @65°C |
| In, Rated Current at 70°C | 321 A @70°C |
| Ics, Rated Service Short-Circuit Breaking Capacity, 415V AC | 25 kA @415VAC |

Catalogue No: **P400-E-3-400-TM**

TBP MCCB 400 FRAME 25kA 3P 400A ADJ THERM ADJ MAG

Power Distribution and Protection > Circuit Breakers > Moulded Case Circuit Breakers > TemBreak PRO Moulded Case Circuit Breaker > TemBreak PRO 400 AF > 3 Pole



| | |
|--|--|
| Icu, Rated Ultimate Short-Circuit Breaking Capacity, 220/240V AC | 35 kA @220/240VAC |
| Icu, Rated Ultimate Short-Circuit Breaking Capacity, 415V AC | 25 kA @415VAC |
| Icu, Rated Ultimate Short-Circuit Breaking Capacity, 440V AC | 22 kA @440VAC |
| AC Power loss per pole at full rated current | 42.4 W |
| Number of Poles | 3 |
| Depth (toggle included) | 151 mm |
| Height | 260 mm |
| Width | 140 mm |
| Weight | 4.3 kg |
| Dielectric Strength | 2500 V AC |
| Electrical Life | 6000 cycles |
| Mechanical Life | 15000 cycles |
| Thermal dial setting range Ir (x In) | 0.63 - 1 |
| Magnetic Dial setting Im (x In) | 6 - 7 - 8 - 9 - 10 - 11 - 12 |
| Cable Cross Section (Min) | 35 mm ² |
| Cable Cross Section (Max) | 400 mm ² |
| Terminal Type | Bolt-Terminal |
| Tightening Torque, Min | 13.7 Nm |
| Tightening Torque, Max | 22.5 Nm |
| Pollution Degree | 3 |
| DIN rail mounting with optional adapter | No |
| Suitable for Panel Mounting | Yes |
| Suitable for Mounting on Chassis | XCP Chassis |
| Withdrawable | No |
| Standards Compliance | AS/NZS 60947-2 IEC 60947-2 |
| Rated temperature of trip unit | 50 °C |
| Storage Temperature, Min | -10 °C min |
| Storage Temperature, Max | 70 °C max |
| Operating Temperature, Min | -5 °C min |
| Operating Temperature, Max | 70 °C max |
| Relative Humidity, Max | 85 %RH |
| Ir, Thermal Trip Current, Min | 252 A |
| Ir, Thermal Trip Current, Max | 400 A |
| Im, Magnetic Trip Current, Min | 2000 A |
| Im, Magnetic Trip Current, Max | 4000 A |
| General Accessories | Alarm Switch Auxiliary Switches Handle Operators Interpole Barriers Locking Devices Mechanical Interlock Motor Operator Shunt Trip Terminal Covers Under Voltage Trip |
| Vibration Acceleration (Max.) | 19 m/s ² |
| Vibration Frequency, Operational (Max.) | 16.7 Hz |
| Vibration Duration (Max.) | 12 min |
| Certifications | CE DEKRA |

Catalogue No: P400-E-3-400-TM

TBP MCCB 400 FRAME 25kA 3P 400A ADJ THERM ADJ MAG

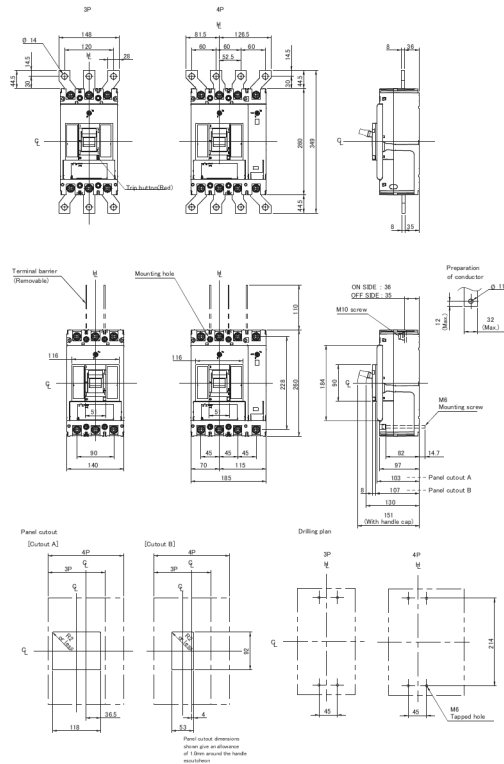
Power Distribution and Protection > Circuit Breakers > Moulded Case Circuit Breakers > TemBreak PRO Moulded Case Circuit Breaker > TemBreak PRO 400 AF > 3 Pole

Shipping Approvals

Contact NHP

REFERENCES

| | |
|---|---|
| IECEX Certificate | - |
| Supplier Declaration of Conformity: | - |
| Installation Guide: | - |
| User Manual: | - |
| Manufacturer Datasheet: | - |
| Manufacturer Catalogue & Product Selection: | - |



Dimension Diagram