

# Catalogue No: **P250-F-3-250-TM**

## TBP MCCB 250 FRAME 36kA 3P 250A ADJ THERM ADJ MAG

Power Distribution and Protection > Circuit Breakers > Moulded Case Circuit Breakers > TemBreak PRO Moulded Case Circuit Breaker > TemBreak PRO 250 AF > 3 Pole



Representative Photo Only  
(actual product may vary based on configuration selections)

- General purpose power distribution, motor starting as well as energy metering and communications
- Current limiting device, reduces fault let through energy for increased installation safety
- Direct opening and indication of main contact status – maximising machine and user safety
- Complies to AS / NZS 60947-2, IEC 60947-2 and CE
- Panel mount standard, with other mounting options
- 3 or 4 pole versions
- Suits XBP and XCP chassis, with panelboard options
- Fault ratings: 25, 36, 50, 70, 125 or 200 kA
- Trip unit options include thermal magnetic or electronic types

### SPECIFICATIONS

Switching Poles	3P
Component Type MCCB	MCCB AC
Model	P
Frame Size	250 AF size
Rated Frequency	50 / 60 Hz
Connection Mode	Cable Tunnel Clamp (Option) Extension Bar (Option) Front Connection Plug-in PM (Option) Plug-in UPX (Option) Rear Connection (Option) Withdrawable TPDR
Suitable for Distribution Switchboard or MCC	Yes
Trip Unit Rating	250 A
Trip Unit Protection Type	Adjustable Thermal Adjustable Magnetic
Ue, Rated Operational Voltage, AC, max	690 V AC
Utilisation Voltage ( min - max)	24 V AC to 690 V AC, 250 V DC
Uimp, Impulse Withstand Voltage	8 kV
Ui, Rated Insulation Voltage	800 V (rms)
In, Rated Current at 30°C	250 A @30°C
In, Rated Current at 35°C	250 A @35°C
In, Rated Current at 40°C	250 A @40°C
In, Rated Current at 45°C	250 A @45°C
In, Rated Current at 50°C	250 A @50°C
In, Rated Current at 55°C	241 A @55°C
In, Rated Current at 60°C	232 A @60°C
In, Rated Current at 65°C	223 A @65°C
In, Rated Current at 70°C	215 A @70°C
Icm, Rated Short-Circuit Making Capacity, 690V AC	6 kA
Ics, Rated Service Short-Circuit Breaking Capacity, 415V AC	36 kA @415VAC

# Catalogue No: **P250-F-3-250-TM**

## TBP MCCB 250 FRAME 36kA 3P 250A ADJ THERM ADJ MAG

Power Distribution and Protection > Circuit Breakers > Moulded Case Circuit Breakers > TemBreak PRO Moulded Case Circuit Breaker > TemBreak PRO 250 AF > 3 Pole



Icu, Rated Ultimate Short-Circuit Breaking Capacity, 220/240V AC	50 kA @220/240VAC
Icu, Rated Ultimate Short-Circuit Breaking Capacity, 415V AC	36 kA @415VAC
Icu, Rated Ultimate Short-Circuit Breaking Capacity, 440V AC	25 kA @440VAC
Icu, Rated Ultimate Short-Circuit Breaking Capacity, 690V AC	6 kA @690VAC
Power Loss	50.7 W
AC Power loss per pole at full rated current	16.9 W
Number of Poles	3
Depth (toggle included)	95.5 mm
Height	165 mm
Width	105 mm
Pole Width	35 mm
Weight	1.5 kg
Dielectric Strength	2500 V AC
Electrical Life	10000 cycles
Mechanical Life	30000 cycles
Thermal dial setting range Ir (x In)	0.63 - 1
Magnetic Dial setting Im (x In)	6 - 7 - 8 - 9 - 10
Cable Cross Section (Min)	35 mm <sup>2</sup>
Cable Cross Section (Max)	185 mm <sup>2</sup>
Terminal Type	Bolt-Terminal
Tightening Torque, Min	7.8 Nm
Tightening Torque, Max	12.7 Nm
Pollution Degree	3
DIN rail mounting with optional adapter	No
Suitable for Panel Mounting	Yes
Suitable for Mounting on Chassis	HC Chassis XBP Chassis XBPSS Chassis
Withdrawable	No
Standards Compliance	AS/NZS 60947-2 IEC 60947-2
Rated temperature of trip unit	50 °C
Storage Temperature, Min	-10 °C min
Storage Temperature, Max	70 °C max
Operating Temperature, Min	-5 °C min
Operating Temperature, Max	70 °C max
Relative Humidity, Max	85 %RH
Ir, Thermal Trip Current, Min	160 A
Ir, Thermal Trip Current, Max	250 A
Im, Magnetic Trip Current, Min	1500 A
Im, Magnetic Trip Current, Max	2500 A
General Accessories	Alarm Switch Auxiliary Switches Handle Operators Interpole Barriers Locking Devices Mechanical Interlock Motor Operator Shunt Trip Terminal Covers Under Voltage Trip

# Catalogue No: P250-F-3-250-TM

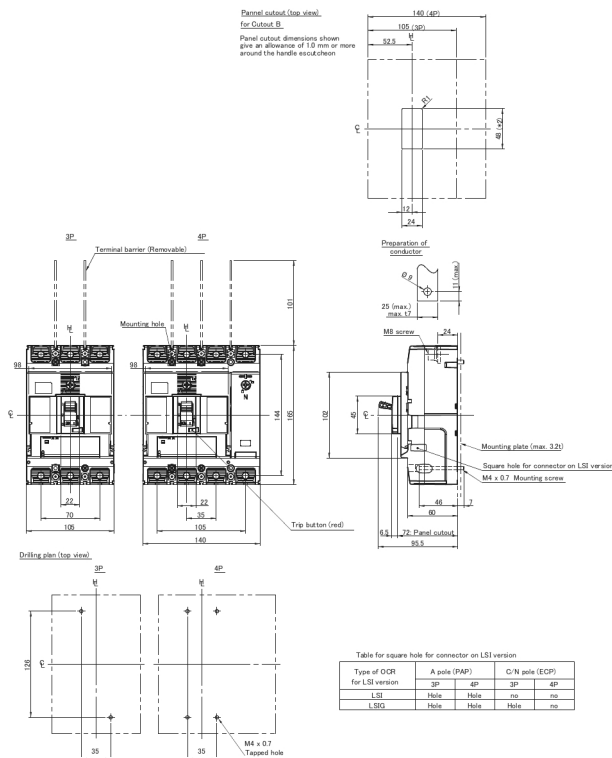
## TBP MCCB 250 FRAME 36kA 3P 250A ADJ THERM ADJ MAG

Power Distribution and Protection > Circuit Breakers > Moulded Case Circuit Breakers > TemBreak PRO Moulded Case Circuit Breaker > TemBreak PRO 250 AF > 3 Pole



Vibration Acceleration (Max.)	19 m/s <sup>2</sup>
Vibration Frequency, Operational (Max.)	16.7 Hz
Vibration Duration (Max.)	12 min
Certifications	CE DEKRA
Shipping Approvals	Contact NHP

REFERENCES	
IECEX Certificate	-
Supplier Declaration of Conformity:	-
Installation Guide:	-
User Manual:	-
Manufacturer Datasheet:	-
Manufacturer Catalogue & Product Selection:	-



Dimension Diagram