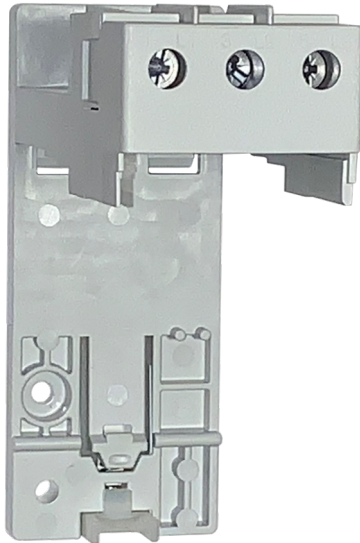




Din rail / panel adapter



Representative Photo Only
(actual product may vary based on configuration selections)

- CEP7-1EE: Trip Class 10 and 20, manual reset only
- CEP7-1EF: Trip Class 10, 15, 20, 30, manual or automatic reset
- 5:1 wide current adjustment range to cover a variety of motor applications
- Supports both single and three-phase operation in a single component
- A variety of accessories available for enhanced protection
- Current measurement-based protection
- Electronic design and thermal memory
- Phase loss protection
- Self-powered and direct-mount design with CA7 contactors

SPECIFICATIONS

Product Series CEP7-1

REFERENCES

IECEX Certificate	-
Supplier Declaration of Conformity:	-
Installation Guide:	-
User Manual:	-
Manufacturer Datasheet:	-
Manufacturer Catalogue & Product Selection:	-