

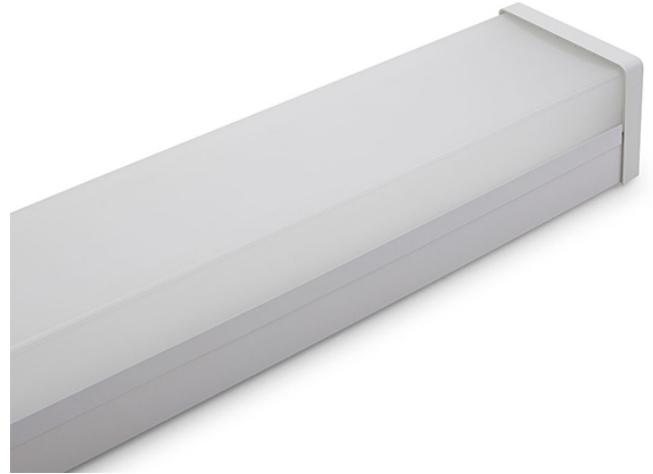
# UMBRA PROFESSIONAL DIFFUSED

EV-UMBRA-PRO-DIFF-600-EM

Professional Diffused Batten, DALI Tuneable White (DT8-Tc)

## FEATURES

- Smartest and most feature inclusive batten on the market. Provides long life and unrivaled control.
- Tuneable white (DT8-Tc) driver and LED allows tuning of the white colour to suit the application or time of day.
- Flicker-free dimming throughout the dimming range which allows light level adjustment to gain maximum power savings.
- LED lifetime >120,000 hours (L70), 90,000 hours (L80) and 43,000 hours (L90).
- 12 years design life at max. ambient
- DALI (IEC62386)
- Full support for DALI and DALI-2 (IEC 62386) DT6 (LED) and DT8 (Tuneable white).
- Emergency models fully compliant (AS/NZS 2293.3) and supports DALI DT1 (IEC 62386-202).
- Soft-start battery charger to reduce building load, allowing the building to stabilize before adding additional load.
- High quality lithium battery (LiFePO4) and smart charger to ensure long battery service life.
- Power monitoring (DT51) allows control systems to monitor and report active power and total power consumption.
- Built-in DALI-2 switch can be used for standalone control or unlimited control with DALI-2 compliant control systems.



ORDERING INFORMATION	
<b>Order code</b>	12234
<b>Description</b>	UMBRA PRO 600mm Diffused LED Emergency batten
<b>Driver Type</b>	DALI DT1 and DT8 Dimmable
Dimmable ~ Includes DALI-2 Driver with full support for DT1, DT6 and DT8-tc allowing flicker free dimming and colour control with compliant DALI-2 Application controllers.	
DALI DT8 ~ Includes DALI-2 Driver with full support for DT6 and DT8-tc allowing flicker free dimming and colour control with compliant DALI-2 Application controllers.	
<b>Item Code</b>	EV-UMBRA-PRO-DIFF-600-EM

MECHANICAL	
<b>Body Material</b>	Powder Coated Steel
<b>Diffuser Material</b>	PMMA
<b>Fitting Colour</b>	White
<b>Installation Type</b>	Surface mount
<b>IP Rating</b>	IP20



ELECTRICAL	
Electrical Rating	Class I
Input Frequency	50 Hz
Input voltage	230Vac
In Australia the Input voltage is defined as 230Vac -6%/+10%. This effectively means that the voltage range of these products are 216Vac - 253Vac or 240V +6%	
Maximum Wattage	20 W
Power Factor	0.95
Standby Power	0.3 W
Standby power for non-maintained/switched maintained emergency devices is measured when the light is off and the charger is in standby mode. For maintained emergency devices, standby power is measured when the light is on and the charger is in standby mode. Typically, charging occurs for the first 16 hours after the device is powered or after a battery discharge.	
Switch Type	Inbuilt Mains Rated DALI Switch
A Terminal input has been provided to allow the wiring of a Main rated switch input. This input can be programmed to switch any controlled area when using a DALI-2 compliant control system. This input supports IEC62386-301 (momentary or rocker switches), IEC62386-302 (on /off switches) and IEC62386-303 (mains rated sensor inputs).	
Working Temp Range	0 to 40 °C

LAMP	
Macadam Steps (SDCM)	3-step MacAdam Ellipse
CCT Configuration	TUNEABLE WHITE
Full support for DALI-2 DT8 has been provided which allows White colour control on a compliant DALI-2 control system. This function can be used to set a desired colour or to transition between colours depending on the time of day.	
CRI	>84
Lamp/LED Current	650 mA
Lamp/LED voltage	24 V

LED LIFETIME		
LED Lifetime	>120000 hrs	
This is the Reported LED Lifetime in Hours based on TM-21. Ektor does not list the projected or calculated LED lifetime, which is normally longer as TM-21 Addendum B explicitly states "The Calculated and Projected Lp(Dk) are not to be reported". This Lifetime refers to the life of a single LED however the system life is longer since the probability and binomial distribution of all LEDs in the system means that the average led is performing above the specification and compensates for the LEDs falling below.		
Ambient Temp (°C)	25 °C	40 °C
L90B10	43000 hrs	43000 hrs
L80B10	90000 hrs	90000 hrs
L70B10	>120000 hrs	>120000 hrs
This rating defines the performance of the led within its lifetime. L relates to lumen depreciation, where the proceeding number gives the resultant lumen output at the end of it reported lifetime. L70, would mean 30% lumen depreciation which means 70% of its initial output and is tested accordingly to TM-21. The B part refers to failures, which can be define as the percentage of LEDs which fall below the L value in the projected lifetime. A value of B10 refers to 10% failure and a value of B50 refers to 50% failure. After the defined lifetime, the system will reach the defined lumen depreciation and the average led failures is defined by the B rating. The B rating is defined in and tested to IEC62717.		

TM-21 Test Hours	20000 hrs
------------------	-----------

COLOUR TEMPERATURE	
CCT	3000 to 6500
CCT Colour	Tunable White
System Lumens	>2200 lm
All photometric data has a tolerance of ±10%.	

DRIVER	
Dimmable	Yes
Driver Included	Yes
Integrated Driver	No
Driver Type	DALI DT1 and DT8 Dimmable
Dimmable ~ Includes DALI-2 Driver with full support for DT1, DT6 and DT8-tc allowing flicker free dimming and colour control with compliant DALI-2 Application controllers. DALI DT8 ~ Includes DALI-2 Driver with full support for DT6 and DT8-tc allowing flicker free dimming and colour control with compliant DALI-2 Application controllers.	

Power Monitoring	DALI Device type 51 power monitoring
Inbuilt DALI-2 support for Device type 51 - Power monitoring for use with DALI-2 compliant control systems which allows the reporting of the products total power consumption for power aggregation and measurements.	
Wiring Type	Re-wireable terminal block (6 pin)

EMERGENCY (EM SUFFIX)	
Replacement Battery Code	01302
Emergency Classification	C0:D50, C90:D25
Emergency Control	DALI Monitored (DT1)
DALI Monitored ~ Supports Emergency test and monitoring over DALI (IEC62386) with full compliance to IEC62386-202.	
Emergency Duration	90 mins
Emergency Lumen Output	330 lm
Emergency Mode	Maintained
Emergency Output Power	1900 mW

COMPLIANCE	
Product Design Life	12 years
The product design life relates to the total product life which includes LEDs, drivers and the enclosure. This is different to the LED lifetime which only refers to the economical lifetime of the LEDs at which time the lumen output has dropped below the L Value. The product design life is calculated at the maximum ambient or working temperature of the product and takes into account the Daily Use.	
Standards	AS/NZS 60598.1 AS 60598.2.22 AS/NZS 61347.1 AS/NZS 61347.2.13 AS CISPR 15

## WARRANTY

<b>Commercial Use Warranty</b>	5Y return to base on General lighting components 8Y return to base on Emergency lighting components First 2Y includes an exclusive onsite warranty
--------------------------------	--

<b>Warranty Operating Hours</b>	30000 hrs
---------------------------------	-----------

This product is provided with a warranty up until the stated warranty period or until the stated warranty operating hours has been reached (whichever occurs first).

## DIMENSIONS

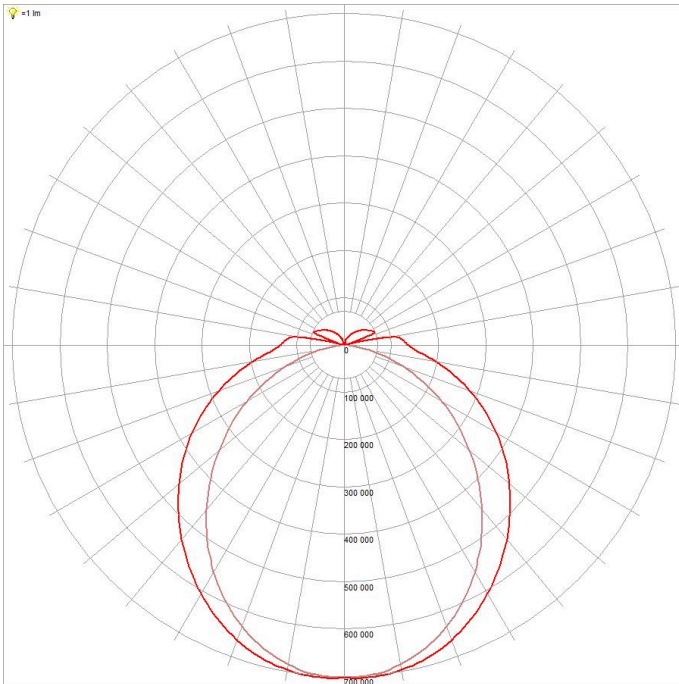
<b>Product Height</b>	93 mm
-----------------------	-------

<b>Product Length</b>	620 mm
-----------------------	--------

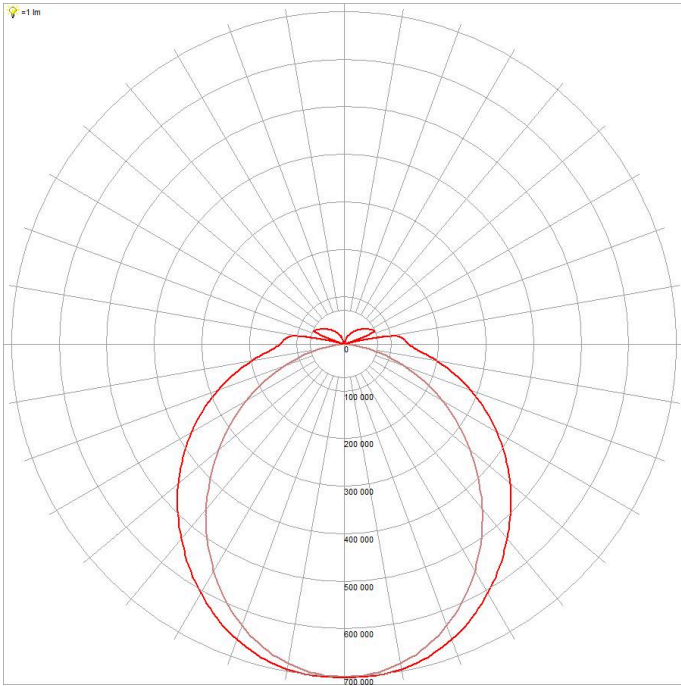
<b>Product Width</b>	130 mm
----------------------	--------

## PHOTOMETRICS

EV/UMBRA/PRO/DIFF/600/4000K



EV/UMBRA/PRO/DIFF/600/500K



EV/UMBRA/PRO/DIFF/600/650K

