



Connected Switch 10AX
Zigbee default mode

41E10PBSWMZ-VW
PDL356PB10MBTZ-VW

Iconic® Connected Module

1 Follow the installation instructions

To change default device settings:

2 Download the Wiser™ by SE App

3 Connect the Iconic device

4 Configure the Iconic device



Customer care

Warranty information

We warrant this product for 2 years. See **Warranty** links below.

Schneider Electric (Australia) Pty Ltd
33-37 Port Wakefield Road, Gepps Cross SA 5094

Customer Care: 13 73 28

Email: customer care.au@se.com

Warranty:

<https://www.se.com/au/en/about-us/legal/terms-and-conditions.jsp>

www.se.com

Schneider Electric (NZ) Ltd

Building 6, 60 Highbrook Drive, East Tamaki, Auckland 2013

Customer Care: 0800 652 999

Email: sales@nz.schneider-electric.com

Warranty:

<https://www.se.com/nz/en/about-us/legal/terms-and-conditions.jsp>

www.se.com

For your safety

⚠️ DANGER

HAZARD OF ELECTRIC SHOCK, EXPLOSION, OR ARC FLASH

- It is illegal for persons other than an appropriately licensed electrical contractors or other persons authorised by legislation to work on the fixed wiring of any electrical installation.
- To comply with all safety standards, the device must be used only for the purpose described in this instruction and must be installed in accordance with the wiring rules and regulation in the location where it is installed.
- Lock out and tag the input circuit before accessing the wiring connections.
- The Locking Bar on the grids must be set to the Closed position to ensure that the device cannot be removed during normal operation.
- There are no user serviceable parts inside the device.

Failure to follow these instructions will result in death or serious injury.

⚠️ CAUTION

EQUIPMENT DAMAGE HAZARD

- Install the device according to instructions in this document.
- Pay attention to the specifications and wiring diagrams related to the installation.
- Do not use the device for any other purpose than specified in this instruction.
- Dropping the device may damage the internal components. Check that the device operates after being dropped or if physical damage is shown.

Failure to follow these instructions can result in injury or equipment damage.

NOTICE

EQUIPMENT DAMAGE HAZARD (LOAD AND OPERATION)

- Operation of the device at elevated temperatures or voltages outside of specification (240 V a.c. and 25 °C) may cause the over-temperature protection circuitry to operate.
- Reduce the size of the connected load or use a different brand of lamp to prevent recurrence.
- Do not operate the product for prolonged periods in extreme conditions.

Failure to follow these instructions can result in equipment damage.

NOTICE

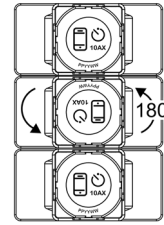
MAXIMUM LOAD RATINGS APPLY

Ensure that the number of low voltage lighting transformers connected to a single device does not exceed the maximum load rating of the device.

Failure to follow these instructions can result in equipment damage.

Installation

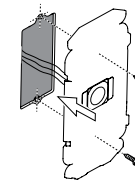
Multi-gang orientation



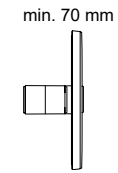
When installing in a 3-gang plate, the middle module must face the opposite way to the other 2 modules.

The maximum load rating of each module must be derated (see Derating section).

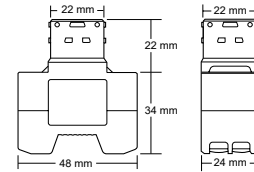
Mounting the grid



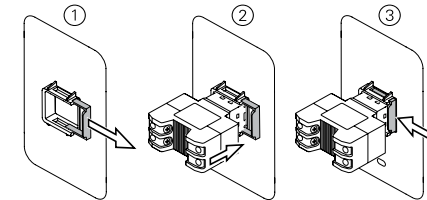
Wall box depth



Module dimensions



Fitting the module to the grid



Derating

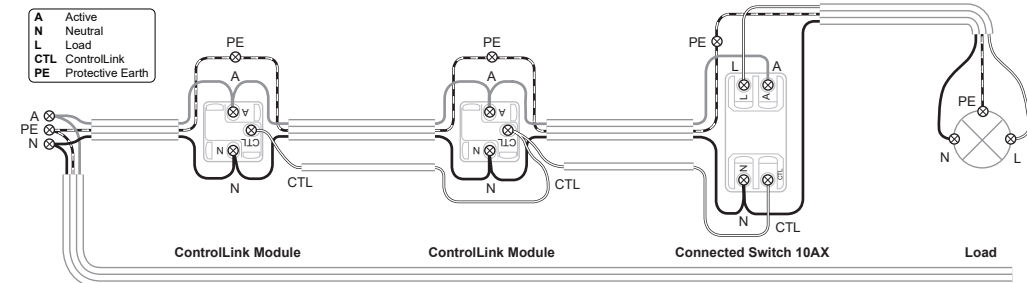
For multi-gang applications, derate the maximum load rating of each module as shown in the table below. The load figures are based on a nominal voltage of 220-240 V a.c.

Primary modules per plate	Max. load per primary module
1	10 A
2	7.5 A
3	6.5 A

Cabling and connections

(Typical 3-way installation using Iconic Connected Module)

Note: Set the ControlLink Module to Switch mode - see ControlLink Module instructions

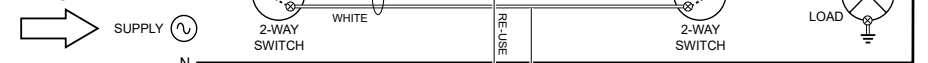


Notes:

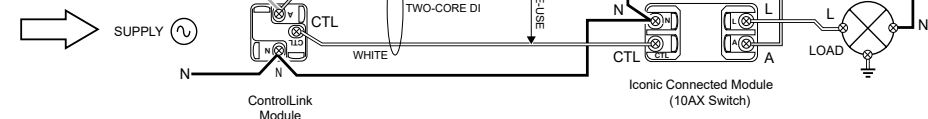
- All Active connections must be on the same phase.
- Up to 5-way switching (e.g. 1x 10AX Switch plus up to 4x ControlLink Modules, or up to 3x 10AX Switches plus 2x ControlLink Modules). In case of multiple 10AX Switches being installed, each switch must be connected to a separate load.
- Total length of CTL and Active loop: max. 50 m.
- Control and load cables must not be coupled.

Retrofit (2-way installation shown)

BEFORE



AFTER



NNZ65145

Configuring the module (optional)

General information

This product operates as a switch 'out-of-the-box', with no configuration needed.

The module can optionally be used as a device in a Wisier™ Hub network. The module must be paired with the Wisier Hub using the Wisier by SE App (see *Pairing* section below).

For information on using the module with the Wisier Hub, refer to the Wisier System User Guide — scan the QR code for your region.



AU

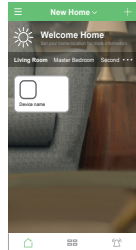
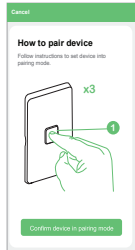
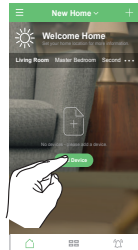


NZ

Pairing to the Wisier Hub

Notes:

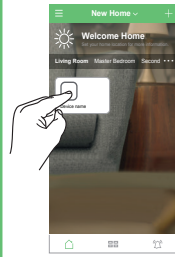
- The Wisier Hub must first be commissioned using the Wisier by SE App. Refer to the Wisier System User Guide.
- When pairing, be in the same room and within a range of 8 to 10 m of the device being paired. Range can be affected by walls and other structures.



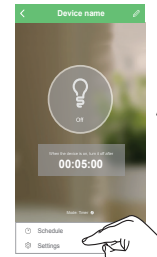
- Install the Wisier by SE App on your mobile phone and register an account.
- Tap **Add Device** in the Home page and select the device.
- Follow the animated instruction to pair the device.
- Device is paired and displayed in the Home page.

IMPORTANT: If you are unable to pair the device with the Wisier hub, please contact customer support.

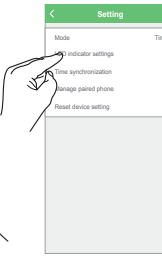
Setting the LED indicator behaviour



- Tap the module in the Home page.



- Tap **Settings** in the module's device page.



- Tap **LED indicator settings** in the device setting page.



- Tap the desired behaviour in the list (default behaviour: **On when load is Off**).

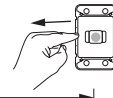
Restoring the device to factory defaults

Note: All customised settings and pairing information will be lost. Before restoring, remove the skin in order to see the module LED indicator.



Short press 3 times, then press and hold

10 s



Release when red LED starts flashing

10 s

Technical data

Note: See product datasheet for full specifications.

Operating voltage	220–240 V a.c., 50 Hz	
Max load rating	15 A. Refer to Load Compatibility table	
Switching technique	Relay	
Protection	Over temperature:	Yes
	Short circuit:	No
	Over-current fuse:	No
	Thermal protection:	Yes
Design	3-wire	
Multiway control	Yes, via ControlLink	
Multiway limits	Max. 5-way switching	
ControlLink/Active cable limit	Total length of CTL and Active loop: max. 50 m	
LED indicator	Yes	
Supported protocols	Zigbee (default), BLE	
Compatible plate ranges	Iconic, Iconic Styl, Iconic Essence, Pro Series	
Mounting centres	84 mm pattern plate	
Compliance	Safety: AS/NZS 60669.2.1 EMC: AS/NZS 60669.2.1 RF: AS/NZS 4268	
Power failure data retention	Internal date/time retained for at least 6 hrs. Settings preserved indefinitely.	
Environmental rating	IP20 (designed for indoor use only)	
Operating humidity	5%–90% RH, non-condensing	
Specifications typical at 25 °C		

Load compatibility

Resistive load (e.g. incandescent lighting)	15 A
MV halogen load	10 A
Electronic LV lighting transformers	
LED lighting drivers	
Linear fluorescent ballasts	6 A @ 0.6 PF
Inductive load (e.g. exhaust fan)	
M-rating	M.40

Disclaimer

Schneider Electric reserves the right to change specifications, modify designs and discontinue items without incurring obligation and whilst every effort is made to ensure that descriptions, specifications and other information in these instructions are correct, no warranty is given in respect thereof and the company shall not be liable for any error therein.

© Schneider Electric 2020

This material is copyright under Australian, New Zealand and international laws. Except as permitted under the relevant law, no part of this work may be reproduced by any process without prior written permission of and acknowledgment to Schneider Electric.

Android is a trademark of Google Inc.

Apple is a trademark of Apple Inc., registered in the U.S. and other countries.

Wisier™ is a trademark and the property of Schneider Electric SE, its subsidiaries and affiliated companies.

Zigbee® is a registered trademark of the Zigbee Alliance.