



PIXIE MULTI-WAY SWITCH G3 - S2W/BTAS

PIXIE SECONDARY DEVICE - SMART HOME digital push button 2 way or 3 way switch or dimming control

Application

Ideal for residential designs, commercial interior spaces requiring multiple location device control

Design Specifications


- Digital remote push button control to enable 2 way or 3 way switch or dimming control.
- Three (3) complimentary key caps provided to suit most switch plates
- Complies to AS/NZS 60669.2.1, easy to retrofit
- Dim or switch with ease, with no messy additional wiring circuits required. Two wire termination mech.
- Switch or dimming control is achieved only in conjunction with PIXIE smart switch or PIXIE smart dimmer. All devices must be paired once installed, for functionality.
- Fully compatible with the PIXIE app and PIXIE PLUS app

Performance

- Dimmable - **NO**



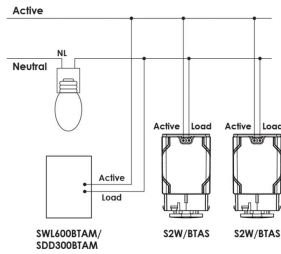
Technical Specification

Product	Model No.	Input Voltage (V/AC)	Body Colour	Dim (mm)
	S2W/BTAS	240	WHITE	42(L) x 24(W) x 24(H)

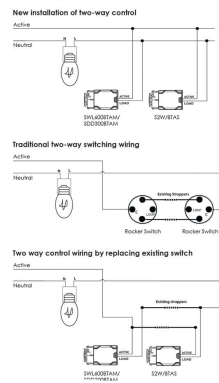
Due to continued product and technology enhancements, data sourced from sal.net.au shall not form part of any contract and or technical performance guarantee unless expressly confirmed in writing by SAL at the time of order. Products are sold in accordance with [SAL Terms and Conditions of sale](#) and all images shown are for illustration purposes only and may vary from the actual colour or finish. Unless specifically stated, all IP ratings nominated for Interior products are from "below the ceiling".

Dimensions

Wiring Diagram

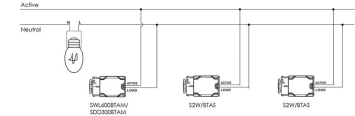


PIXIE MULTI-WAY SWITCH S2W/BTAS G3 - Wiring Diagram

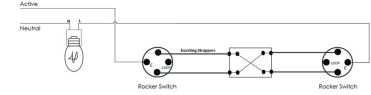


PIXIE MULTI-WAY SWITCH S2W/BTAS G3 - Wiring Diagram

New installation of Three-way control



Traditional Three-way switching wiring



Three-way control wiring by replacing existing switch

