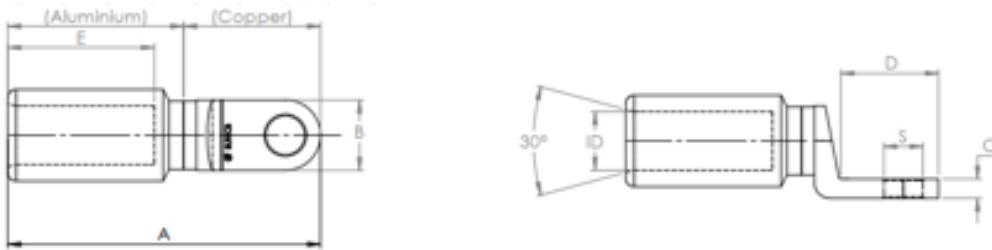


BI-METAL CIRCUIT BREAKER LUGS

FEATURES

- Manufactured using friction welding process producing a very strong electrically sound joint
- Suitable for aluminium conductor and copper circuit breaker terminals
- Crimp from palm end to force compound into conductor strands
- Crimping compound in barrel and sealed with cap
- Crimping positions, AF, clearly marked on barrel

TECHNICAL DATA



ORDERING INFORMATION

PART NO.	NOMINAL CONDUCTOR CSA mm ²	ID	A	B	C	D	E	S	A/F HEX	CRIMP DIE	NO. OF CRIMPS
		+0.2 -0.1	±2	±1	±0.5	±1.0	±1.5	±0.25			
BL70CB-8	70	11.5	69	16	4	18.0	32	8.5	13.2	HT-70AL	2
BL70CB-10	70	11.5	69	16	4	18.0	32	10.5	13.2	HT-70AL	2
BL95CB-8	95	13.5	105	20	4	22.5	60	8.5	17.3	HT-95/120AL	2
BL95CB-10	95	13.5	105	20	4	22.5	60	10.5	17.3	HT-95/120AL	2
BL95CB-12	95	13.5	105	20	4	22.5	60	13	17.3	HT-95/120AL	2
BL120CB-8	120	15.5	105	20	4	22.5	60	8.5	17.3	HT-95/120AL	2
BL120CB-10	120	15.5	105	20	4	22.5	60	10.5	17.3	HT-95/120AL	2
BL120CB-12	120	15.5	105	20	4	22.5	60	13	17.3	HT-95/120AL	2
BL150CB-8	150	16.5	117	25	6	29.0	60	8.5	22.0	HT-150/185AL	2
BL150CB-10	150	16.5	117	25	6	29.0	60	10.5	22.0	HT-150/185AL	2
BL150CB-12	150	16.5	117	25	6	29.0	60	13	22.0	HT-150/185AL	2
BL185CB-8	185	18.5	115	25	6	29.0	60	8.5	22.0	HT-150/185AL	2
BL185CB-10	185	18.5	115	25	6	29.0	60	10.5	22.0	HT-150/185AL	2
BL185CB-12	185	18.5	115	25	6	29.0	60	13	22.0	HT-150/185AL	2
BL240CB-10	240	22.0	132	30	8	33.5	60	10.5	28.4	HT-240/300AL	2
BL240CB-12	240	22.0	132	30	8	33.5	60	13	28.4	HT-240/300AL	2
BL240CB-14	240	22.0	132	30	8	33.5	60	15	28.4	HT-240/300AL	2
BL240CB-16	240	22.0	132	30	8	33.5	60	17	28.4	HT-240/300AL	2
BL300CB-10	300	23.5	120	30	8	33.5	60	10.5	28.4	HT-240/300AL	2
BL300CB-12	300	23.5	120	30	8	33.5	60	13	28.4	HT-240/300AL	2
BL300CB-14	300	23.5	120	30	8	33.5	60	15	28.4	HT-240/300AL	2
BL300CB-16	300	23.5	120	30	8	33.5	60	17	28.4	HT-240/300AL	2

VERSION 1 10/19

In support of our policy of continuous product improvement we reserve the right to change materials and specifications without notice. Drawings, where used, are not to scale. All dimensions are in millimetres and sizes given are approximate. Where possible, technical MSDS data sheets are made available on the website. All products should be installed and used in accordance with manufacturer's instructions provided. Warning: products may be the subject of registered designs and patents. Refer to website for terms and conditions on warranty.