



BOLT LED EXIT SIGN

SUPERIOR OPTICS IN A MODERN AND DISCREET DESIGN

THE **GLOBAL SPECIALIST**
IN ELECTRICAL AND DIGITAL BUILDING INFRASTRUCTURES

 **legrand**[®]

THE LATEST INNOVATION IN LED EXIT SIGNS

Introducing the new **BOLT LED EXIT** by Legrand featuring a modern and slimline design, this exit sign features superior optics and easy installation.

The **BOLT LED EXIT** features a specifically engineered internal one piece linear lens expanding its light coverage when paired with the honeycomb diffuser. Allowing **BOLT** to achieve superior optics, providing greater illumination with minimal glare.



FAST INSTALLATION AND MAINTENANCE



5 YEAR WARRANTY



2.7W 100,000 HOURS



STANDALONE OR MONITORED

Upgrade to **BOLT LED EXIT** from your traditional G2 exit by simply sliding off a G2 and sliding on a **BOLT** slide connect.

BOLT LED EXIT can also be networked with Legrand's Award winning Galaxy Connected emergency lighting system® for monitored installations.



⚡ Design

The **BOLT LED EXIT** combines function and design to suit all applications. Bolt is available in three models; white, black and theatre to fit different ceiling finishes and application areas.

SNAP-FIT

SLIDE CONNECT

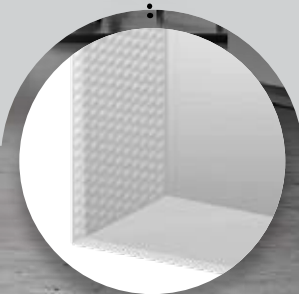


⚡ Optics

BOLT LED EXIT features a specifically engineered linear one piece lens for the LEDs, refracting light to provide an even illumination across the exit sign fascia.



The sign's honeycomb diffuser gives **BOLT** superior optics, providing greater illumination with minimal glare.



Lighting performance

BOLT LED EXIT's superior optics provides a greater lighting coverage, this allows **BOLT** to assist in reducing emergency lighting points depending on the floor plan. A lighting design is required to determine if a reduction in lighting points can be achieved.



MAXIMUM SPACING FOR 0.2 LUX (AUSTRALIA)

Classification	Maximum spacing between luminaires Mounting height (metres)					
	2.1	2.4	2.7	3	3.3	3.6
C ₀ :E6.3	6.9	7.4	7.9	8.2	8.5	8.8
C ₉₀ :D6.3	8.5	8.8	8.9	9.1	9.1	9.2

As per AS/NZS 2293:2018

MAXIMUM SPACING FOR 1 LUX (NEW ZEALAND)

Classification	Maximum spacing between luminaires Mounting height (metres)					
	2.1	2.4	2.7	3	3.3	3.6
C ₀ :E6.3	4.1	4.1	-	-	-	-
C ₉₀ :D6.3	4.0	3.7	-	-	-	-

As per AS/NZS 2293:2018

Note: Theatre versions have no classification as they are an internally illuminated sign as per AS/NZS 2293.

Lighting design floorplans



LIGHTING DESIGN USING A STANDARD EXIT SIGN



THIS LIGHTING DESIGN SHOWS BOLT **SIGNIFICANTLY REDUCES** THE NUMBER OF EMERGENCY LIGHTING POINTS REQUIRED

It is recommended to perform a lighting design to see the full benefits for your installation.

Technology and Controls



BOLT LED EXIT sign is fitted with a premium Lithium-ion battery (LIION) which offers a 10 year design life. Batteries are fitted with a Protection Circuit Module (PCM) for added protection from excessive charging and over discharging. iSmart™ temperature sensing is designed to ensure that the battery is not charged outside its specified ambient temperature zones.

BOLT LED EXIT is available as a Standalone emergency lighting product or can be easily integrated into Legrand's Galaxy Connected Emergency Lighting System for monitored installations.

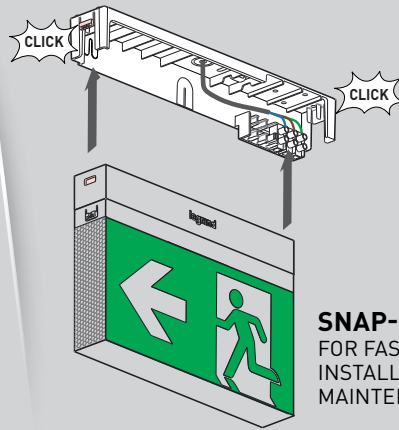
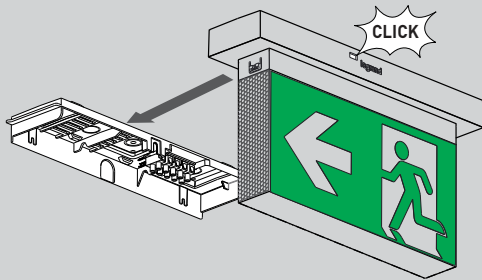




Installation

The **BOLT LED EXIT** sign has been manufactured with the installer in mind. Featuring a snap fit design, installation is easy and fast. The exit is equipped with added safety with an auto power disconnection terminal when the base is removed from the mounting bracket with a simple click from both sides.

SLIDE CONNECT
FOR UPGRADING EXISTING INSTALLATIONS
FROM OTHER LEGRAND SLIDE CONNECT EXITS



SNAP-FIT
FOR FAST AND SIMPLE
INSTALLATION AND
MAINTENANCE

Maintenance

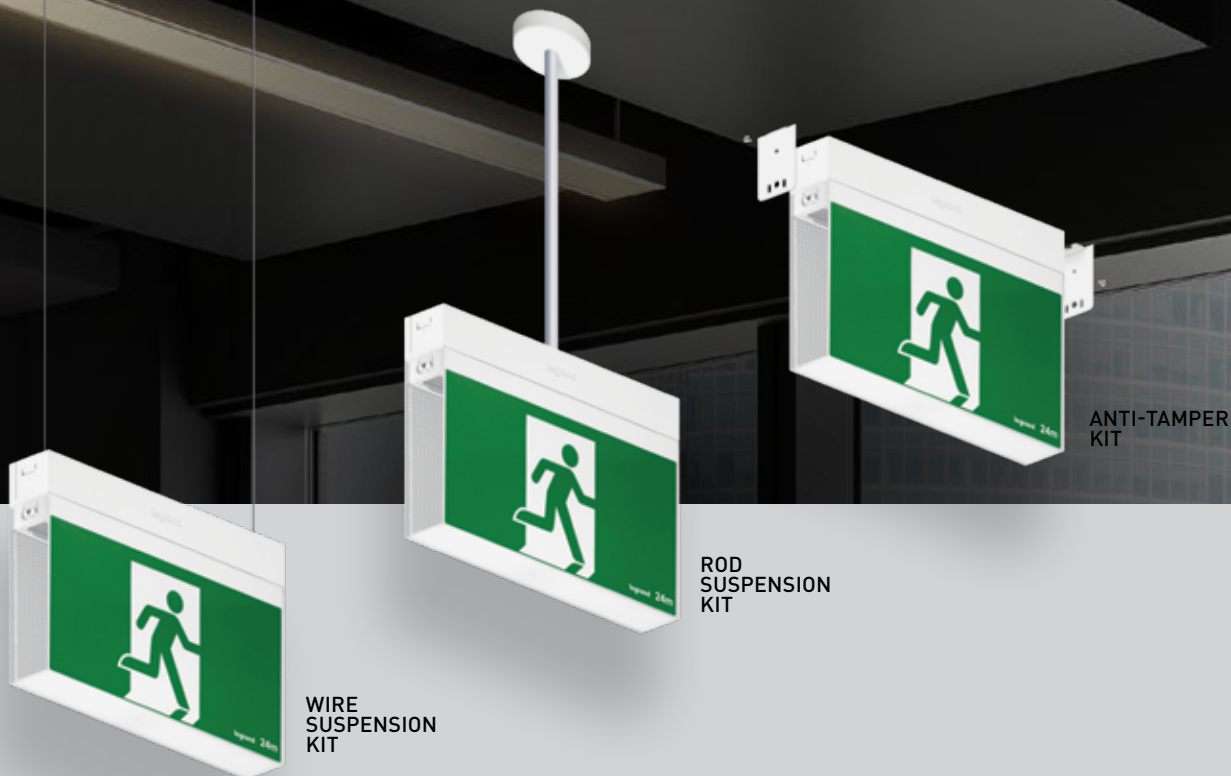
BOLT LED EXIT sign's innovative design allows simple and fast in house maintenance with its snap feature and clip in lithium battery.



Upgrading existing installations

For legacy slide connect installations such as the G2 or the traditional fluorescent slide connect. The Exit sign can be simply upgraded by sliding off the legacy product and replacing with **BOLT LED EXIT** Slide Connect model without the need of rewiring.





STANDALONE MODELS

	Cat No	Description
SNAP-FIT BRACKET	659573LI	Maintained LED SS/DS – White
	659577LI	Maintained LED SS/DS – Black
	659574LI	Maintained LED SS/DS- Theatre
SLIDE CONNECT BRACKET	659575LI	Maintained LED SS/DS – White
	659578LI	Maintained LED SS/DS – Black
	659576LI	Maintained LED SS/DS- Theatre

GALAXY MODELS

	Cat No	Description
SNAP-FIT BRACKET	659135LI	Maintained LED SS/DS – White
	659139LI	Maintained LED SS/DS – Black
	659136LI	Maintained LED SS/DS - Theatre
SLIDE CONNECT BRACKET	659137LI	Maintained LED SS/DS – White
	659140LI	Maintained LED SS/DS – Black
	659138LI	Maintained LED SS/DS- Theatre

DS = Double-Sided, SS = Single-Sided
 Bolt LED Exit is supplied with three Running Man decals: Straight, Left and Right

ACCESSORIES

Cat No	Description
659459	L-Bracket for Snap-fit Models - White
686215	L-Bracket for Slide Connect Models - White
686216	Wire Suspension Kit (2x6 m)
686235	Wire guard for Wall Mount Exit Signs
686236	Wire guard for Ceiling Mount Exit Signs
686260	Suspension Rod Kit 600 mm – White
686261	Suspension Rod Kit 1200 mm – White
686262	Suspension Rod Kit 3000 mm – White
686263	Suspension Rod Kit 600 mm – Black
686264	Suspension Rod Kit 1200 mm – Black
686265	Suspension Rod Kit 3000 mm – Black
659460	Anti-tamper Kit - White
659461	Anti-tamper Kit - Black



SCAN QR CODE
 FOR MORE INFORMATION
 ABOUT THE BOLT LED EXIT

LEAD THE WAY WITH LEGRAND

Legrand is an active member of



Legrand Australia
1300 369 777
www.legrand.com.au

Legrand New Zealand
0800 476 009
www.legrand.co.nz

Disclaimer: The information provided in this document is intended for informational purposes only has been prepared and reviewed with all reasonable care, believed to be correct at the time of printing. Legrand Australia and New Zealand may also make improvements and/or changes in the products, pricing and/or programs described in this information at any time without notice.