

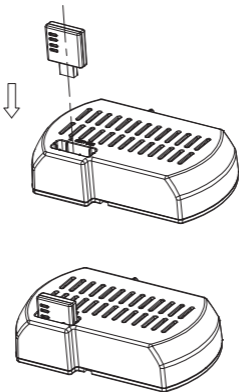
Skyfan<sup>DC</sup>  
The future in fans

App WiFi Control Module



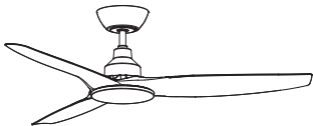
Model No.: SKYAPPCM

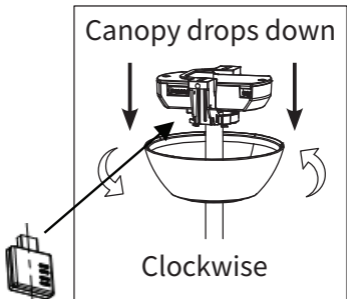
1. Remove Orange rubber cover from app control slot on Skyfan receiver box.



2. Finalise Installing your Skyfan DC ceiling fan (must be installed by licensed and qualified tradesperson. Note: If fan has already been installed, turn off main power supply, remove fan upper canopy by twisting in a clockwise direction and lowering to expose receiver box. Then insert App control module. This can be completed without removing the receiver but should be completed by a licensed and qualified tradesperson.

Refer to digram on next page.





Replace Canopy by sliding upward and re-fixing by twisting Anti clockwise.

3. Download the “Tuya Smart” app.  
Scan the QR code or download from  
Apple Store (iOS) or Google Play  
(Android).

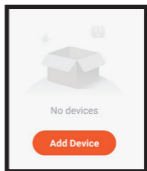


It's also compatible with the  
Smartlife App.



4. Register/sign up your Tuya smart account. Follow the prompts using a choice of either mobile phone number or email address.
5. Turn on Wi-Fi on your mobile phone and ensure fan is in the same Wi-Fi area.

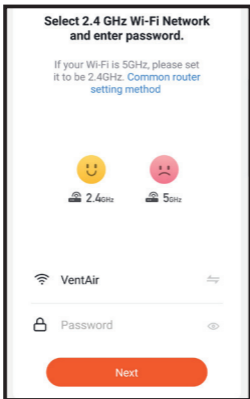
6. Open your Tuya Smart App and choose 'add device'



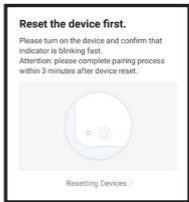
7. Choose 'Small Home Appliances' then choose 'Fan'



8. Select a 2.4GHz Wi-Fi network and enter password. (if your Wi-Fi is 5GHz, it should also display a 2.4GHz version as a Wi-Fi option available) please set to the 2.4GHz option. Select 'Next'.



## 9. Reset the Fan, ready for pairing/syncing.



- Ensure Remote control is set to fan 'OFF' and LIGHT OFF'.
- Turn isolation switch (found on the wall in same room as fan) to 'ON' the fan will emit one beep, the 'with light' models will also turn the light on as is default setting) and "within 10 seconds' press and hold the 'TIMER' BUTTON on the fan remote (3-5 sec).

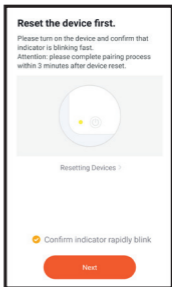




A. The Skyfan DC fan ‘without light’ will emit a “beep-beep” sound to indicate that your fan is ready to be paired with your Tuya Smart App.

B. The Skyfan DC fan ‘with light’, the light will flash to indicate that your fan is ready for pairing with your Tuya Smart app.

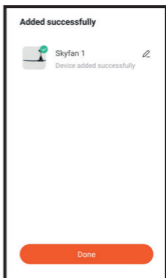
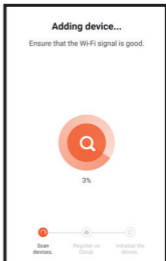
10. Select ‘confirm’ indicator rapidly blink’ then select ‘NEXT’ to begin the pairing procedure.



## Note:

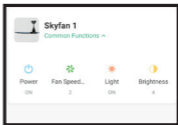
Please complete the pairing procedure within 3 minutes of resetting.

11. Your Skyfan DC fan now has been added to your Tuya Smart account. If it is failed, repeat steps 8 to 10 until you see this interface.

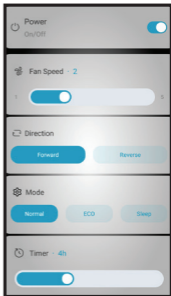
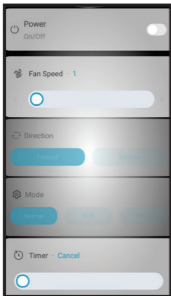


## CONTROLS:

You can control some basic functions from the home screen.



Or click on the fan to access the main control panel for full list of control functions.





4 Capital Place,  
Carrum Downs,  
Victoria, 3201

Technical Support Ph: 1300 665 926  
e: [info@ventair.com.au](mailto:info@ventair.com.au)  
w: [www.ventair.com.au](http://www.ventair.com.au)

Ventair reserves the right to alter technical specifications without prior warning

Rev: 1.0