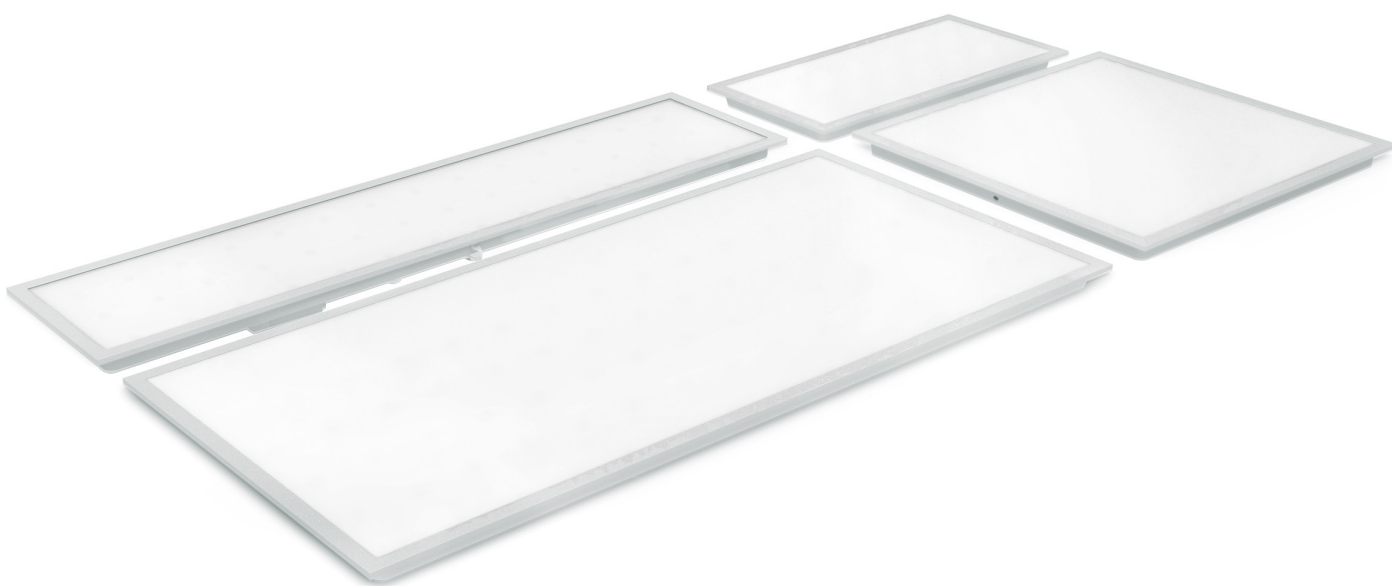


atomⁱ

BACKLIT PANELS

LED Tri-Colour Backlit panels

AT6023



Features

- Easy to install
- Three year warranty¹
- Large range of mounting accessories



Selectable colour temperature
3000K, 4000K & 6500K



System efficiency
>110lm/W²



Wide working temperature
-10°C – 45°C



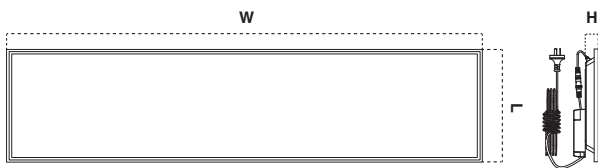
Reported lifetime (TM-21)
L70 B10 (9K) >54,000 Hrs³

Product datasheet

Product range

SKU	Code	Wattage	Lumens			Dimensions		
			Warm white	Cool white	Daylight	Length	Width	Height*
SKU 16955	AT6023/306	20W	1930lm	2090lm	1970lm	295mm	595mm	34mm
SKU 16957	AT6023/312	36W	3760lm	4010lm	3815lm	295mm	1195mm	34mm
SKU 16956	AT6023/606	36W	3385lm	3620lm	3440lm	595mm	595mm	34mm
SKU 16958	AT6023/612	60W	5815lm	6330lm	6025lm	595mm	1195mm	34mm

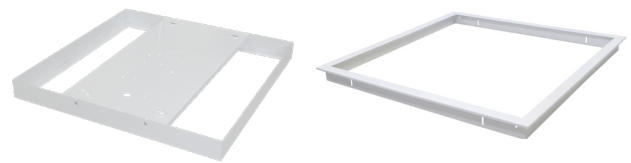
* Height does not include driver. Allow 70mm height with driver included.



Product specification

Voltage	220-240V ~ 50/60Hz		
Power consumption	20W, 36W or 60W		
Light colour options	Warm white	Cool white	Daylight
Colour temperature	3000K	4000K	6500K
Finish	White		
Colour rendering index	> 80		
Beam angle	120°		
Dimmable	No		
Warranty	3 Year ¹		
Working temperature	-10°C – 45°C		
System efficiency	> 110 lm/W ²		
Reported lifetime (TM-21)	L70 B10 (9K) > 54,000 Hrs ³		
IP Rating	IP20		
Electrical classification	Class II		
UGR	< 22 ⁴		
Sdcm	< 6		

Accessories



Surface mount frames

SKU	Description
16222	White surface mount panel frame 300x1200
16223	White surface mount panel frame 600x600
16224	White surface mount panel frame 300x600

Plaster recessed frames

SKU	Description
10398	White plaster recessed panel frame 300x1200
10760	White plaster recessed panel frame 600x600
10258	White plaster recessed panel frame 300x600
13856	White plaster recessed panel frame 600x1200

Accessories dimensions

SKU	Length	Width	Height
16222	302mm	1202mm	75mm
16223	602mm	602mm	75mm
16224	302mm	602mm	75mm
10398	330mm	1230mm	41mm
10760	630mm	630mm	41mm
10258	630mm	330mm	41mm
13856	645mm	1225mm	45mm

1) Three years/15,000 Hours operation time (whichever arrives first) subject to all warranty conditions. 2) System efficiency for AT6023/312/TRI at 4000K.

3) Atom Lifetimes are based on the requirements of TM21, where Atom only states the reported lifetime as addendum B states that the calculated or projected lifetimes are NOT to be reported due to statistical uncertainty. 4) UGR is based on industry standard room measurements.