



# AIRPLUS 52" AC CEILING FAN

REXEL



**50W**  
AC  
MOTOR

**ABS**  
BLADES

**52**  
INCH  
1320mm

**10047**  
m<sup>3</sup>/hr  
AIRFLOW

**15°**  
CEILING  
RAKE MAX

**6YR**  
WARRANTY

Wall control  
Included



Watch our demonstration video here

**Airplus fans are made from rust and UV resistant ABS plastic giving you endless options of where you can place them around your home. A simple modern design will compliment any space whilst giving you a great airflow.**

- Patented\* Ezi-Fit blades reduce fan assembly and installation time
- Durable corrosion and UV resistant body and canopy construction with high strength moulded ABS blades
- 3 speed wall control with switch included
- Reversible All-Seasons technology for use all year round
- 85% pre-assembled out of the box for fast installation
- Powerful 50W AC motor
- 18W 1400lm Cool White (4000K) dimmable LED light kit (model with light only)
- Uses our Quick Connect Plug System to reduce installation time
- Suitable for indoor or enclosed alfresco areas
- Compatible with Brilliant remotes and BrilliantSmart fan controllers

## APPLICATIONS

- Bedrooms, lounge and family rooms
- Indoors or enclosed alfresco areas not exposed to the weather



WHITE NO LIGHT



WHITE WITH LIGHT



# AIRPLUS 52" AC CEILING FAN



## TECHNICAL SPECIFICATIONS

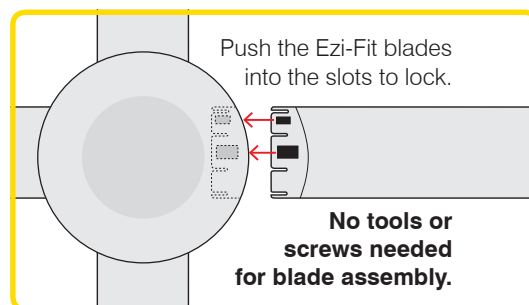
Size	52 inch (1320mm)
Motor Type	AC (Alternate Current)
Operating Voltage	240V / 50Hz
Motor Wattage	50W
Construction	ABS body and canopy
Blade Material	Moulded ABS (x4)
Ceiling install	Hangsure
Blade Pitch	14 degree (effective)
Ceiling Rake	15 degree max
Control	Wall 3 speed with on/off switch (included)
Light Wattage:	18W
Lumens:	1400lm (4000K)
Dimmable:	Yes
Operating Temperature:	10°C - 35°C
Warranty	3 year in-home plus 3 year replacement (6-Year) <i>*Limited warranty for wall controller, remote controller and light. Refer to warranty card inside the box for more details.</i>
Standards:	AS/NZS 60335-1 AS/NZS 60335-2-80
Patent:	2018201157 (pending)

## INSTALLATION

Must be installed by a licensed electrician

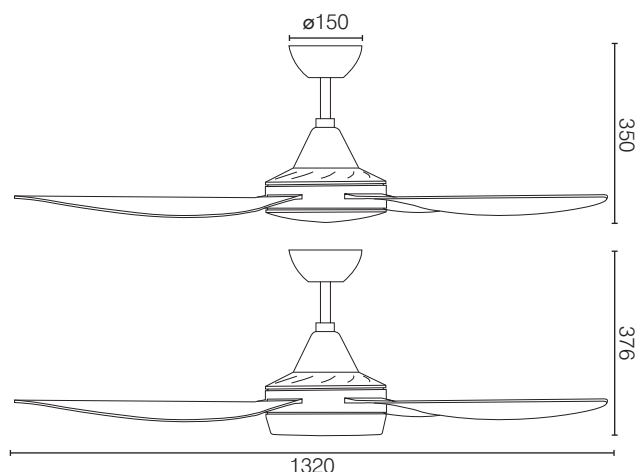
## ACCESSORIES (sold separately)



Extension Rod with loom kits, 900mm x Ø21mm:	100550/05 white
Remote Kits	99999 Basic 99222 LCD Display 99111 Smart WiFi



## AIR MOVEMENT:

SPEED	LOW	MED	HIGH
RPM	108	154	212
Power	15W	25W	50W
Airflow	4,965m³/h	6,849m³/h	10,047m³/h



	MODEL	COLOUR	DESCRIPTION	BOX SIZE	GROSS WEIGHT	BOX QTY	BARCODE/TUN
RETAIL BOX	21540/05	White	Airplus 52 AC Fan	W591 x H318 x D288 mm	6.5 kg	1 pc	 9 312641 215400 >
RETAIL BOX	21541/05	White	Airplus 52 AC Fan & Light	W591 x H318 x D288 mm	6.7 kg	1 pc	 9 312641 215417 >