



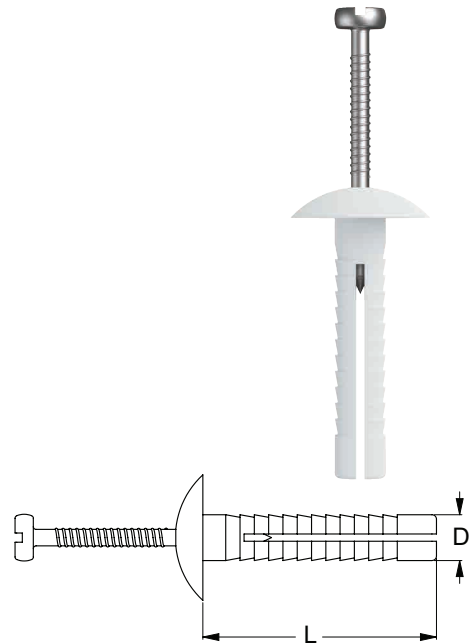
PRODUCT DATA

Nail in Anchor - Mushroom Head

A steel/nylon style anchor that is set by hammer impact, thus sliding the pin down the stem creating an expansive force against the wall of the substrate. Ideal for mechanical service trades using suspending straps, various hanger systems, and through fixings. Nylon body provides insulation between screw and work surface.

Anchor Component	Material/Plating			
Drive Nail	Steel			
Anchor Body	Nylon			
Part	QFIND	Dia Ø	Length	Pack Qty
		D (mm)	L (mm)	
MNMNM050025	MNM100	5.0	25	100
MNMNM050040	MNM101	5.0	40	100
MNMNM0650025	MNM102	6.5	25	100
MNMNM0650040	MNM103	6.5	40	100
MNMNM0650050	MNM104	6.5	50	100

Anchor Component	Material/Plating			
Drive Nail	304 Stainless			
Anchor Body	Nylon			
Part	QFIND	Dia Ø	Length	Pack Qty
		D (mm)	L (mm)	
MNMSM050025	MNM107	5.0	25	100
MNMSM0650025	MNM108	6.5	25	100

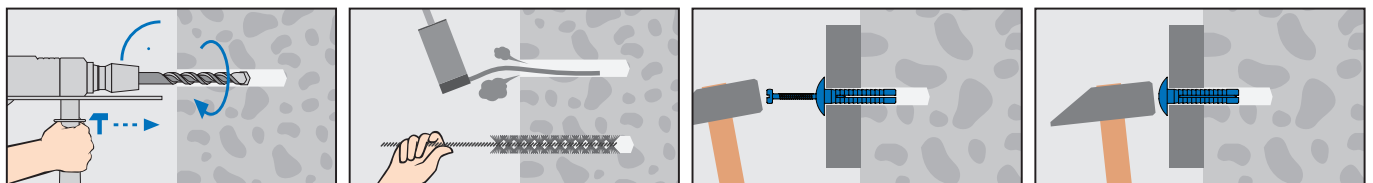


Quick & easy installation

Once installed the anchor becomes tamper resistant

Applications	Trades	Base Material
<ul style="list-style-type: none"> • Signage • Pipe and Conduit Saddles • Shelf brackets • Switch boxes 	<ul style="list-style-type: none"> • Electrical • Plumbing 	<ul style="list-style-type: none"> • Concrete • Brick • Stone

Installation



Disclaimer: While every reasonable effort has been made to ensure that this document is correct at the time of printing, Hobson Engineering, its agencies and employees, disclaim any and all liability to any person in respect of anything or the consequences of anything done or omitted to be done in reliance upon the whole or any part of this document.

Bolt Tension | Anti-Vibration | Product Reliability | Traceability

hobson.com.au **QUALITY FASTENERS SINCE 1935**