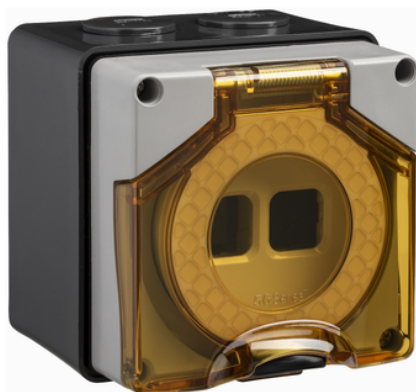


## Product data sheet

### Characteristics

# 56M42-CG

## Clipsal - 56 Series, 40 Module Adaptor, 2 Aperture



### Main

Range of product	Series 56
Range	Clipsal - 56 Series
Product brand	Clipsal
Product or component type	Enclosure
Plug, socket category	Low voltage
Outlet standard	Industrial
Colour	Grey (RAL 7035)

### Complementary

Number of gangs	1 gang
Shape	Square
Device mounting	Surface
Cable entry number	3
Material	ABS (acrylonitrile butadiene-styrene): cover
Fixing mode	By screws
Tightening torque	0.8 N.m
Cable entry	3 entries of 25 mm diameter
Length	107 mm
Width	101 mm
Depth	77 mm
Height	107 mm
Net weight	0.5 kg
IP degree of protection	IP66
Targeted country	Australia

### Environment

Ambient air temperature for operation	-25...75 °C
---------------------------------------	-------------

### Packing Units

Unit Type of Package 1	PCE
Number of Units in Package 1	1
Package 1 Height	11.28 cm
Package 1 Width	10.35 cm
Package 1 Length	10.65 cm
Package 1 Weight	0.5 kg

The information provided in this documentation contains general descriptions and/or technical characteristics of the performance of the products contained herein. This documentation is not intended as a substitute for and is not to be used for determining suitability or reliability of these products for specific user applications. It is the duty of any such user or integrator to perform the appropriate and complete risk analysis, evaluation and testing of the products with respect to the relevant specific application or use thereof. Neither Schneider Electric Industries SAS nor any of its affiliates or subsidiaries shall be responsible or liable for misuse of the information contained herein.

## Offer Sustainability

REACH Regulation	<a href="#">REACH Declaration</a>
EU RoHS Directive	Compliant with Exemptions
Mercury free	Yes
China RoHS Regulation	<a href="#">China RoHS Declaration</a>
RoHS exemption information	<a href="#">Yes</a>