

Bi-metal HSS hole saw with 8 % cobalt Ø 20 mm
8 % cobalt!



Characteristics

Ø (mm) : 20

Materials

- ☑ Metal
- ☑ Wood
- ☑ Plasterboard

GENERAL INFORMATION

Description

Supplied without arbor.

Technical details

Material: bi-metal HSS steel with 8 % cobalt.
Cutting depth: 38 mm.

Application(s)

To drill steel, stainless steel, wood, metal and plastic.

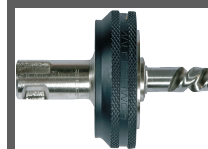
ACCESSORIES



Arbors for bi-metal hole saws standard



HSS pilot drill for BIZ 700 896 and BIZ 700 897 arbors



SHAFTS FOR CLIC HOLE SAWS



HSS PILOT DRILL FOR BI-METAL 8 % COBALT HOLE SAWS



SET OF TWO CLIC ADAPTERS



Set of 3 adapters standard hole saw ø > 30 mm

LOGISTIC INFORMATION

Packaging



Blister package

Height (cm) : 5.1
Length (cm) : 2
Depth (cm) : 2
Net weight (kg) : 0.03
Gross weight (kg) : 0.08



Outer package 1



Carton box

Height (cm) : 8
Length (cm) : 17.5
Depth (cm) : 9
Net weight (kg) : 0.19
Gross weight (kg) : 0.24



Outer package 2



Carton box

Height (cm) : 19.5
Length (cm) : 47
Depth (cm) : 34
Net weight (kg) : 3.83
Gross weight (kg) : 4.83

