

**Bi-metal HSS hole saw with 8 % cobalt Ø 64 mm**  
*8 % cobalt!*



**Caracteristics**

Ø (mm) : 64

**Materials**

- ☑ Metal
- ☑ Wood
- ☑ Plasterboard

**GENERAL INFORMATION**

**Description**

Supplied without arbor.

**Technical details**

Material: bi-metal HSS steel with 8 % cobalt.  
Cutting depth: 38 mm.

**Application(s)**

To drill steel, stainless steel, wood, metal and plastic.

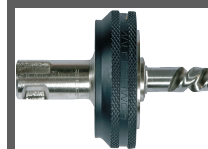
**ACCESSORIES**



**Arbors for bi-metal hole saws standard**



**HSS pilot drill for BIZ 700 896 and BIZ 700 897 arbors**



**SHAFTS FOR CLIC HOLE SAWS**



**HSS PILOT DRILL FOR BI-METAL 8 % COBALT HOLE SAWS**



**SET OF TWO CLIC ADAPTERS**



**Set of 3 adapters standard hole saw ø > 30 mm**

**LOGISTIC INFORMATION**

**Packaging**

**Blister package**

Height (cm) : 4.4  
Length (cm) : 6.4  
Depth (cm) : 6.4  
Net weight (kg) : 0.19  
Gross weight (kg) : 0.24



**Outer package 1**

**Carton box**

Height (cm) : 12  
Length (cm) : 25.5  
Depth (cm) : 15.2  
Net weight (kg) : 1.12  
Gross weight (kg) : 1.17



x 6



**Outer package 2**

**Carton box**

Height (cm) : 32.5  
Length (cm) : 62  
Depth (cm) : 27  
Net weight (kg) : 11.16  
Gross weight (kg) : 12.16



x 60

