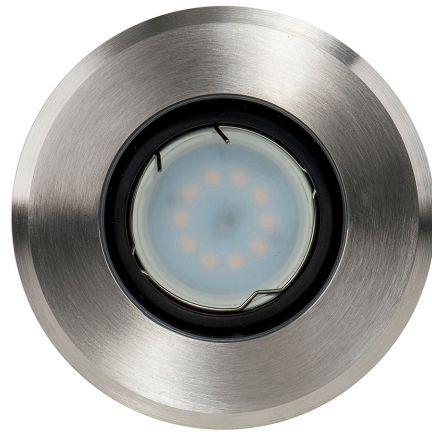


# 316 Stainless Steel Round Adjustable Inground Lights



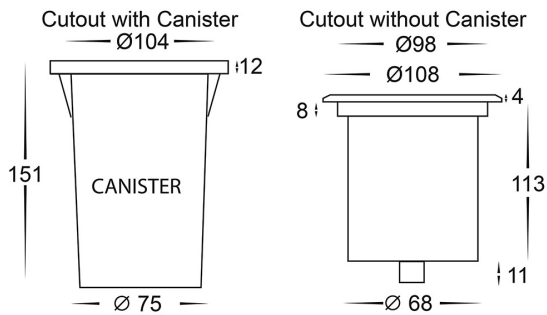
## PRODUCT SPECIFICATIONS

**Name:** Luta Round  
**Material:** 316 Stainless Steel + aluminium  
**Colour:** Stainless Steel  
**Tilt:** 30°  
**IP Rating:** IP67  
**IK Rating:** IK10  
**Trafficable:** 500kg  
**Lamp Base:** MR16  
**CRI:** ≥80  
**Cable Length:** 300mm  
**Wiring:** Parallel  
**Dimmable:** No  
**Warranty:** 2 Years Replacement\*\*



**Compatible with**  
**Tri-Colour 9in1**  
**3w, 5w, 7w**  
**12v or 24v LED Globe**

## DIMENSIONS



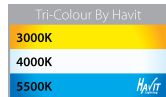
## APPROVALS



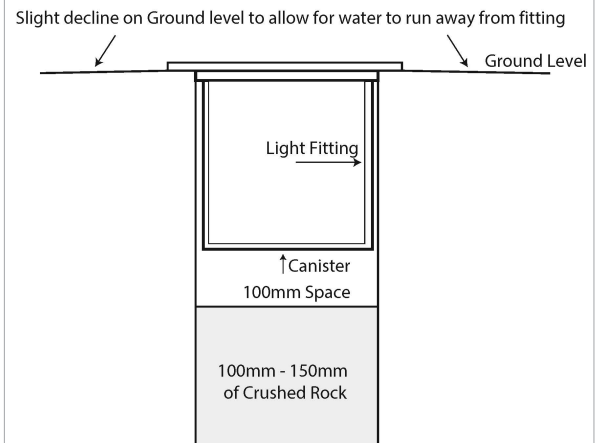
## IP RATING



## COLOUR TEMPERATURE



## INSTALLATION WITH ADEQUATE DRAINAGE



## Product Ordering

IMAGE	PART NUMBER	COLOURTEMP	LUMENS	INPUT	BEAM ANGLE	INCLUDED LED
	<b>HV1825T</b>	3000K 4000K 5500K	270lm 285lm 300lm	12v DC	120°	<b>Tri-Colour</b> 5w MR16 LED

12v DC models must be used with suitable 12v DC LED Driver

\* Lumen output measured at source

\*\* See Warranty Terms and Conditions for more information

For more information contact Havit Lighting

ADDRESS:  
 143 Beauchamp Road  
 Matraville NSW 2036  
 Australia

Tel: 02 9381 8300  
 Fax: 02 9666 8881  
 Email: sales@havit.com.au  
 web: www.havit.com.au