



MR16CC7KIT DIMMABLE - 7W

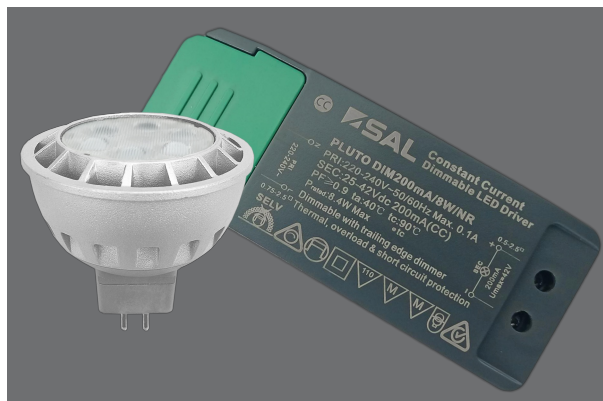
Dimmable 7 watt - MR16 profile shape LED lamp complete with driver, flex and plug

Application

Ideal for any residential interior space

Design Specifications

- Shockproof frosted polycarbonate lens
- Die-cast aluminium lamp body
- High efficiency LED optics, CRI >80
- Kit includes lamp, constant current (trailing edge) dimmable driver, flex and plug. Mix and match with your choice of downlight profile, ordered separately. Replacement lamp is only - SAL CC7KIT/LAMP.
- Beam distribution 60°, CCT 3000K
- Lamp base GU5.3, mandatory replacement lamp SAL CC7KIT/LAMP



Performance

- Dimmable - **YES**
- Dimmer Type - **Trailing Edge**



Technical Specification

Product	Model No.	Input Voltage (V/AC)	Power (W)	Lumens (lm)	CCT (K)	Beam Angle (°)
	MR16CC7KIT/WW	240	7	650	3000	60
	CC7KIT/LAMP		7	650	3000	60

Dimmable	CRI	Diameter (mm)	Dim (mm)
YES	80	50	100(L) x 40(W) x 23(H)
YES	80	50	

Due to continued product and technology enhancements, data sourced from sal.net.au shall not form part of any contract and or technical performance guarantee unless expressly confirmed in writing by SAL at the time of order. Products are sold in accordance with [SAL Terms and Conditions of sale](#) and all images shown are for illustration purposes only and may vary from the actual colour or finish. Unless specifically stated, all

IP ratings nominated for Interior products are from "below the ceiling".

Dimensions



Warning

Use only SAL MR16CC7 lamp.