

RESIDUAL CURRENT CIRCUIT BREAKER

The CBI SFRSE5 Range

✓ RESIDENTIAL ✓ COMMERCIAL ✓ INDUSTRIAL



SFRSE5 |
Residual Current Circuit Breaker |
1 + N | 6 kA

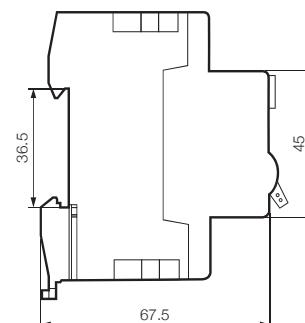
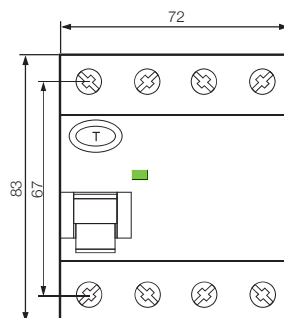
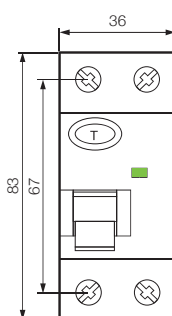


SFRSE5 |
Residual Current Circuit Breaker |
3 + N | 6 kA

Features



- > Provides earth leakage protection
- > Provides protection against insulation failure
- > DIN mounting
- > 6 kA high breaking capacity
- > Pin / fork type busbar terminal connection
- > Fire resistant material to withstand abnormally high temperature
- > Resistant to impacts to the device
- > Automatically disconnects the circuit when an earth fault occurs or exceeds the rated leakage current
- > IEC / EN 61008-1
- > Independent of power supply and line voltage, and free from external interference

SFRSE5 Range | Dimensions



RESIDUAL CURRENT CIRCUIT BREAKER

SFRSE5 Range | Technical Data

	SFRSE5
Equipment Type	Residual Current Circuit Breaker (Type A)
Standards	AS/NZS 61008.1
Approvals / Marks	SAA-191450-EA  
Number of Poles	1 + N, 3 + N
Rated Breaking Capacity (kA) (I_{cn} = I_{cs})	6 kA
Standard Ampere Rating (A) (I_n)	40, 63 A
Residual Operating Current (mA)	30 mA
Rated Voltage (V) (U_e)	240 V ac (1P+N), 415 V ac (3P+N)
Frequency (Hz)	50/60 Hz
Operating Principal	Thermal-Magnetic
Handle Colour	Black
Terminal Configuration	Pillar type
Max Conductor Size	35 mm ²
Terminal Torque	2.5 Nm
Electrical Endurance	10 000 cycles
Mechanical Endurance	20 000 cycles
IP Degree	IP20
Max Back-up Fuse	I _n = 16 - 63 A 63 A Gg/gl I _n = 80 A 80 A Gg/gl

***Note:** Please use fuse or MCB to obtain overload protection.

RESIDUAL CURRENT CIRCUIT BREAKER

SFRSE5 Range | Selection Data

SFRSE5 - Type A

	BOM No.	
	1 + N	3 + N
Ampere Rating	30 mA	30 mA
40	SFRSE5R1N40	SFRSE5R3N40
63	SFRSE5R1N63	SFRSE5R3N63
Qty / Box	1	1
Qty / CTN	60	60
CTN Size	47.5 x 25.6 x 17.5 cm	
Wiring Diagram	