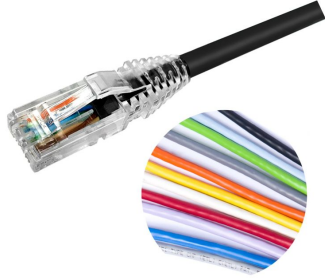


NPC6AUZDB



NETCONNECT® Cat 6A U/UTP RJ45 Patch Cord, LSZH

- High-performance patch cords exceeding industry standards supporting NETCONNECT channel specifications
- Standardized transparent, slim-line boots provides consistent patch cord appearance and supports highest density applications
- Colored clips are available to fit the transparent boot, eliminating the need of multiple colors for matching every jacket color
- Colored pull latch tabs are available for easier plug release handling from the modular jack

Product Classification

Regional Availability	EMEA
Portfolio	NETCONNECT®
Product Type	Twisted pair patch cord
Product Series	NPC
Ordering Note	Cords < 1 m are valid elements for use in a channel or as an equipment interconnect but due to their limited length are not guaranteed to meet component compliance requirements that were developed to assess the quality of longer cords Cords > 1 m are authorized for use in channels and are an effective standalone method used to connect active devices

General Specifications

ANSI/TIA Category	6A
Cable Type	U/UTP (unshielded)
Conductor Type	Solid
Interface, Connector A	RJ45 plug
Interface Feature, connector A	Standard
Interface, Connector B	RJ45 plug
Interface Feature, connector B	Standard
Jacket Color	Black Blue Green Orange Red Slate White Yellow
Pairs, quantity	4
Transmission Standards	IEEE 802.3bt Type 4
Wiring	T568B

Dimensions

Cable Assembly Length Range (m)	1 – 30
--	--------

NPC6AUZDB

Cable Assembly Length Range (ft)	1 – 100
Cable Assembly Length Range (cm)	15 – 999
Cable Assembly Length Range (in)	6 – 999
Diameter Over Jacket	7.24 mm 0.285 in
Compatible Conductor Gauge, solid	24 AWG

Ordering Tree

NPC - ¹⁰ OR ¹² ¹¹

Jacket Color

10	BK	Black
	BL	Blue
	GN	Green
	GY	Gray
	OR	Orange
	PK	Pink
	RD	Red
	WT	White
	YL	Yellow

UOM

11	F	Foot
	M	Meter
	N	Inch
	C	Centimeter

Length

12 XXX

Notes

- Cords > 1m are authorized for use in channels and are an effective standalone method used to connect active devices
- Cords < 1m are also valid elements for use in a channel or as an equipment interconnect but due to their limited length are not guaranteed to meet component compliance requirements that were developed to assess the quality of longer cords

Material Specifications

Conductor Material	Bare copper
Contact Plating Material	Gold over nickel
Material Type	Phosphor bronze contacts Polycarbonate plug housing

Mechanical Specifications

Minimum Bend Radius Note	4 times the outer cable diameter
Plug Insertion Life, minimum	750 times

Environmental Specifications

Operating Temperature	-20 °C to +60 °C (-4 °F to +140 °F)
Relative Humidity	Up to 93%, non-condensing
Acid Gas Test Method	IEC 60754-2
Environmental Space	Low Smoke Zero Halogen (LSZH)
Flame Test Method	IEC 60332-3-22

NPC6AUZDB

Safety Standard	UL 1863
Smoke Test Method	IEC 61034-2

Packaging and Weights

Packaging quantity	1
---------------------------	---

Regulatory Compliance/Certifications

Agency	Classification
RCM	Compliant to electrical safety & telecommunications requirements



Included Products

- 2843018-3
MP-6AU-Boot-71-1 – Integrated Boot and Pair Manager for MP-6AU, size 71, transparent
- 6-2843008-1
MP-6AU-Plug-B-1 – Modular Plug, Category 6A/6, Unshielded, Cond Insulation OD - 0.79mm, 100 pcs