

FASTENERS

### E1180 END CAP

To suit 41x41mm channel/strut.

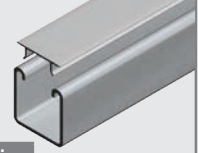
41



Available Finish	Part Number	Service Guide
P	<b>E1180P</b>	<b>A</b>

### E1184 CHANNEL COVER

To suit 41mm wide channel/strut.



Available Finish	Part Number	Service Guide
P	<b>E1184P</b>	<b>A</b>
A	<b>E1184A</b>	<b>A</b>

STRUT SYSTEMS

### E3380 END CAP

21

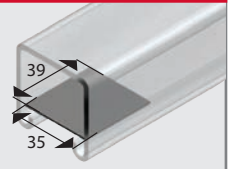


To suit 41x21mm channel/strut.

Available Finish	Part Number	Service Guide
P	<b>E3380P</b>	<b>A</b>

### E2552 FIBRE RETAINER

Suitable for use in all 41mm channel sections for the support of cables prior to cover strip installation.



Available Finish	Part Number	Service Guide
P	<b>E2552P</b>	<b>B</b>

CABLE SUPPORTS

### E5580 END CAP

61



To suit 41x61mm channel/strut.

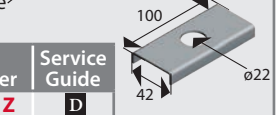
Available Finish	Part Number	Service Guide
P	<b>E5580P</b>	<b>A</b>

### E2541 SPACER CLEVIS

41mm wide channel

E2541

Fluorescent Fixture



Available Finish	Part Number	Service Guide
Z	<b>E2541Z</b>	<b>D</b>

FIRERATED

## HOW TO ORDER CHANNEL ACCESSORIES

Example

# E1180 P



#### Select Channel Accessory

- E1180** 41x41mm Channel End Cap
- E3380** 41x21mm Channel End Cap
- E5580** 41x61mm Channel End Cap
- E1184** 41mm wide Channel Cover
- E2552** Fibre Retainer
- E2541** Spacer Clevis

#### Select Finish

- P** Plastic
- A** Aluminium\*
- Z** Zinc Plated\*\*

\*E1184 only

\*\*E2541 only

**Service Guide Key:** **A** Usually in stock at all branches

**C** Normal lead time

**B** Usually in stock at head office

**D** Made to Order (lead time on enquiry)

PIPE SUPPORTS