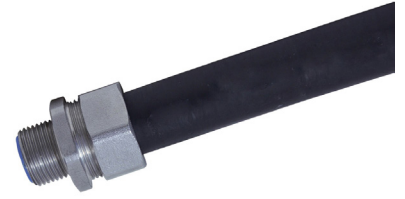


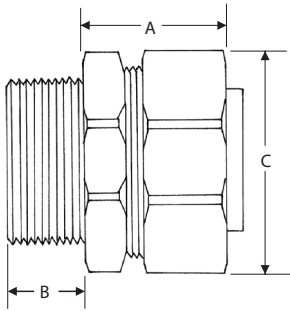
STRAIGHT STAINLESS FITTINGS

Features & Benefits

- 304 grade stainless steel Liquid Tight straight configuration, presents a male thread
- Tested and Certified to IEC60079-0: 2007-10 and IEC60079-31: 2008
- Ex ta IIIC IP66, IEC Ex TSA 11.0026
- High performing corrosion and chemical resistance, high mechanical strength
- Supplied with a flanged grounding cone and sealing ring



Line Drawing



PART NO.	THREAD SIZE (MM)	CONDUIT SIZE (MM)	A (MM)	B (MM)	C HEX MAX (MM)
LTCM-S10	20	16	23	12.7	28
LTCM-S11	20	20	23	12.7	31.5
LTCM-S12	25	25	26	14.2	38.5
LTCM-S13	32	32	28	16.3	46.5
LTCM-S14	40	40	33	18.2	59
LTCM-S15	50	50	32	18.2	67
LTCM-S16	63	63	34	20	80

Ordering Information

PART NUMBER	DESCRIPTION
LTCM-S10	Liquid tight Straight Stainless Steel Fitting 16/20mm
LTCM-S11	Liquid tight Straight Stainless Steel Fitting 20mm
LTCM-S12	Liquid tight Straight Stainless Steel Fitting 25mm
LTCM-S13	Liquid tight Straight Stainless Steel Fitting 32mm
LTCM-S14	Liquid tight Straight Stainless Steel Fitting 40mm
LTCM-S15	Liquid tight Straight Stainless Steel Fitting 50mm
LTCM-S16	Liquid tight Straight Stainless Steel Fitting 63mm

In support of our policy of continuous product improvement we reserve the right to change materials and specifications without notice. Drawings, where used, are not to scale. All dimensions are in millimetres and sizes given are approximate. Where possible, technical MSDS data sheets are made available on the website. All products should be installed and used in accordance with manufacturer's instructions provided. Warning: products may be the subject of registered designs and patents. Refer to website for terms and conditions on warranty.