

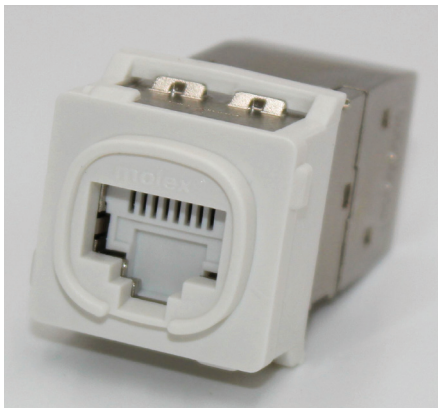
PowerCat 6A MOD-Clip Shielded Jack >

The Molex PowerCat 6A MOD-Clip DataGate Shielded Jack is a key component of the PowerCat 6A shielded end-to-end solution.

The PowerCat 6A MOD-Clip Shielded Jack offers superior alien crosstalk suppression, excellent insertion loss, and provides enhanced electromagnetic interference (EMI) protection by utilizing robust die cast zinc alloy connector body housing. This shielded connector also features a unique spring loaded shutter that not only protects it from dust and contaminants, but the ingenious spring-loaded design also ejects improperly seated patch cords. The shielded connector is dual color coded for either 568A or 568B wiring schedules. The jack accommodates flexible cable routing by allowing 90° or 180° cable entry.

The PowerCat 6A MOD-Clip Shielded Jack was specifically designed for high-speed data transmission. The Jack is also backwards compatible with shielded C6 and C5e systems.

Molex recommends that the full range of PowerCat 6A Shielded products be used in an end-to-end system to maximize cabling performance. The PowerCat 6A shielded system is compliant with ANSI/TIA-568.2-D-2018 and ISO 11801:2017 for the support of 10GBASE-T.



MOD-Clip Front



MOD-Clip Straight Entry



MOD-Clip Side Entry

FEATURES & ADVANTAGES

Robust die cast zinc alloy housing	Spring loaded cable/drain wire clamp
Category 6A performance when installed as a complete PowerCat Shielded System	Cable can be terminated in 3 directions – Straight, on left or right side of jack
Dual color coding allows 568A/B wiring	Complies with ISO/IEC 11801 and TIA Cat 6A channel and PL requirements
Patented IDC (insulation displacement contact) V-shaped contacts that flex not fatigue when terminated	Molex DataGate jacks may accommodate both solid (AWG22 to AWG24) and stranded (AWG26) cables
Spring-loaded shutter	RoHS Compliant
Accepts color coded port identification labels	Jack can be terminated with 4 Pair Termination Tool or standard IDC Punch Down Tool
360°Shielded	

www.molex.com/products/copper/cat6a/

Molex is a registered trademark of Molex, LLC in the United States of America and may be registered in other countries; all other trademarks listed herein belong to their respective owners. This information is correct at the time of publication, specifications are subject to change.

PowerCat 6A MOD-Clip Shielded Jack >

SPECIFICATIONS

Commercial Standards

ANSI/TIA-568.2-D-2018
ISO 11801:2017
IEC 60603-7
UL 1863
CSA C22.2

Environmental Standards

RoHS compliant
REACH compliant

Electrical

Interface Resistance: 20mΩ
Initial Contact Resistance: 2.5mΩ
Insulation Resistance: >100MΩ

Physical

Minimum Backbox Depth Requirement:
44mm
Shipping Weight: 25g (0.88 oz)
Dimensions: 17.8mm(W) x 23.1mm(H)
x 41.3mm(L)

Mechanical

RJ45 Connector
Connector Housing: Zinc Alloy plated bright
Ni/Cu
Operating Life: Minimum 750 insertion
cycles
Contact Material: Copper Alloy
Contact Plating: 50μ Gold/ 50μ Nickel
minimum
Contact Force: 100g minimum
Plug Retention Force: 6.8kg minimum

IDC Connector
Housing: Thermoplastic, UL94V-0
Operating Life: Minimum 20
reterminations
Contact Material: Copper Alloy
IDC Contact Plating: Matte Tin
Contact Force: 100g minimum
Wire Accommodation: 22-24 AWG solid and
26 AWG stranded
Module Fascia: Thermoplastic UL94V-0

PoE

**Our PowerCat 6A system is suitable
for the most demanding PoE
applications:**

IEEE 802.3bt from Type 1 to Type 4, and
CISCO UPoE+
HD Base-T PoH up to 100W
RP3 compliant as defined by EN 50174-
2:2018, ISO/IEC 14763-2:2019 and AS/NZS
14763.2:2020

Notes:

For new installations of PoE Type 3 / Class
5 and above that wish to be eligible for
the Molex 25 year Application Assurance
Warranty, we require Category 6A cable to be
used throughout.

To confirm your PoE / RP3 cabling design is
eligible for the Molex 25 year Application
Assurance Warranty, your design must be
verified and validated with the Molex PoE
Calculator. Read more <https://www.molexces.com/poe-calculator>

Molex recommends that the PoE feature on an
individual switch port are power disabled prior
to unplugging the associated powered Device.

Molex recommends that the full range of
PowerCat 6A products be used in a system to
maximize cabling and PoE performance.

Details on Molex requirements for Warranty
can be found at <https://www.molexces.com/about-us/our-warranty/>

www.molexces.com/products/copper/cat6a/

PowerCat 6A MOD-Clip Shielded Jack >

ORDERING INFORMATION

Order No.	SAP No.	Description
MMC-00017-01	183010091	PowerCat 6A MOD-Clip Shielded Jack RJ45 568A/B - Almond
MMC-00017-02	183010020	PowerCat 6A MOD-Clip Shielded Jack RJ45 568A/B - White
MMC-00017-04	183010019	PowerCat 6A MOD-Clip Shielded Jack RJ45 568A/B - Black
MMC-00017-BL	183010092	PowerCat 6A MOD-Clip Shielded Jack RJ45 568A/B - Blue
MMC-00017-08	183010093	PowerCat 6A MOD-Clip Shielded Jack RJ45 568A/B - Gray
MMC-00017-GR	183010094	PowerCat 6A MOD-Clip Shielded Jack RJ45 568A/B - Green
MMC-00017-05	183010095	PowerCat 6A MOD-Clip Shielded Jack RJ45 568A/B - Ivory
MMC-00017-PP	183010097	PowerCat 6A MOD-Clip Shielded Jack RJ45 568A/B - Purple
MMC-00017-RD	183010098	PowerCat 6A MOD-Clip Shielded Jack RJ45 568A/B - Red
MMC-00017-YL	183010099	PowerCat 6A MOD-Clip Shielded Jack RJ45 568A/B - Yellow
MMC-00017-PK	183010173	PowerCat 6A MOD-Clip Shielded Jack RJ45 568A/B - Pink
Termination Tool		
31.0011	182520002	4 Pair Termination Tool Frame
31.0015	182520015	4 Pair Termination Lacing Head C6A

www.molex.com/products/copper/cat6a/