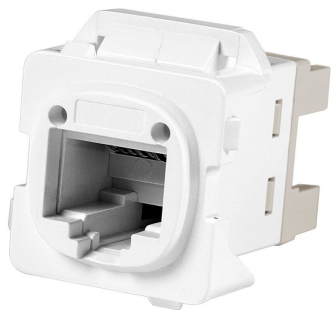


760241220 | FMK10G-A.WHT



NETCONNECT FMK Series Modular Jack, RJ45, category 6A, T568A /T568B, unshielded, no dust cover, alpine white

- Color is more prominently visible across the body of the jack
- Allows for all jack variants to be terminated with the SL termination tool
- Lacing fixture of the SL termination tool is used to establish the cable termination

Product Classification

Regional Availability	Australia/New Zealand
Portfolio	NETCONNECT®
Product Type	Modular jack
Product Series	KJ Series

General Specifications

ANSI/TIA Category	6A
Cable Type	Unshielded
Color	Alpine white
Conductor Type	Solid Stranded
Integrated Dust Cover Type	None
Mounting	Clipsal/HPM faceplates
Outlet Type	Standard
Termination Tool	SL Termination tool
Termination Type	IDC
Transmission Standards	ANSI/TIA-568.2-D ISO/IEC 11801 Class EA
Wiring	T568A T568B

Dimensions

Panel Thickness, recommended	1.6 mm 0.063 in
Height	16.2 mm 0.638 in
Width	21.5 mm 0.846 in
Depth	33.08 mm 1.302 in
Compatible Cable Diameter, maximum	7.24 mm 0.285 in

760241220 | FMK10G-A.WHT

Compatible Insulated Conductor Diameter, maximum	1.45 mm 0.057 in
Contact Plating Thickness	1.27 µm
Compatible Conductor Gauge, solid	22 AWG 24 AWG
Compatible Conductor Gauge, stranded	24 AWG 26 AWG

Electrical Specifications

Remote Powering	Fully supports the safe delivery of power over LAN cabling described by IEEE 802.3bt (Type 4) and complies with the unmating under electrical load requirements prescribed by IEC 60512-99-002
------------------------	--

Material Specifications

Contact Base Material	Beryllium copper
Contact Plating Material	Gold
Material Type	Copper alloy High-impact, flame retardant, thermoplastic Polycarbonate

Environmental Specifications

Operating Temperature	-10 °C to +60 °C (+14 °F to +140 °F)
Storage Temperature	-40 °C to +70 °C (-40 °F to +158 °F)
Flammability Rating	UL 94 V-0

Packaging and Weights

Packaging quantity	10
Packaging Type	Bag

Regulatory Compliance/Certifications

Agency	Classification
CHINA-ROHS	Below maximum concentration value
ISO 9001:2015	Designed, manufactured and/or distributed under this quality management system
RCM	Compliant to electrical safety & telecommunications requirements
REACH-SVHC	Compliant as per SVHC revision on www.commscope.com/ProductCompliance
ROHS	Compliant

