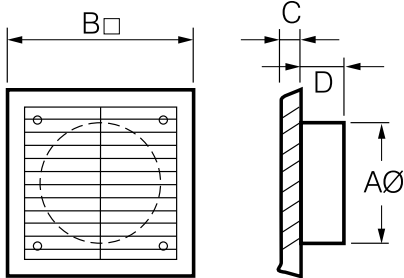




Includes flywire mesh sheet to eliminate entry of insects.



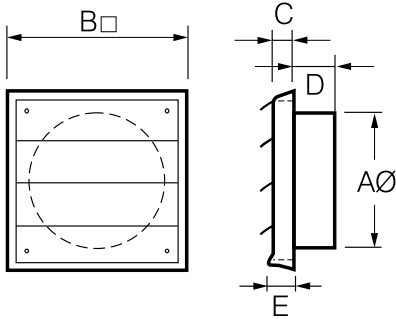
EPFL/PFL EXTERNAL FIXED LOUVRE GRILLE



- Designed to withstand harsh outdoor conditions, made with impact & UV resistant Polypropylene.
- Includes flywire mesh sheet to eliminate entry of insects.
- Available in 100mm, 125mm, 150mm & 200mm.

MODEL NO. (SINGLE UNIT ONLY)	MODEL NO. (FOR BULK PACK)	NO. OF GRILLES IN BULK PACK	DUCT DIAMETER AØ	B□	C	D
EPFL100PK	EPFL100	20	100	155	16	29
EPFL125PK	EPFL125	10	125	155	16	29
EPFL150PK	EPFL150	10	150	186	17	37
PFL200PK	PFL200	15	200	248	10	30

All dimensions in mm



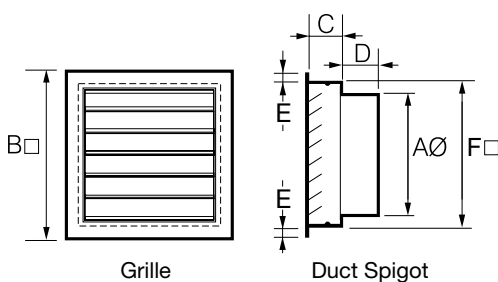
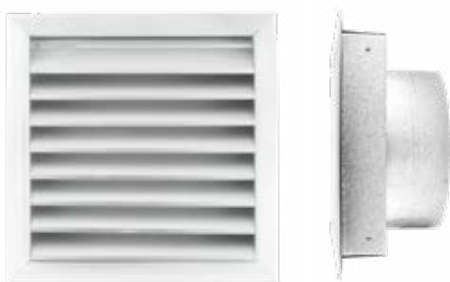
PGL EXTERNAL GRAVITY LOUVRE GRILLE



- Designed to withstand harsh outdoor conditions, made with impact & UV resistant PVC.
- Includes shutters that open when the fan is running and close when it is off.
- Available in 100mm, 125mm & 150mm.

MODEL NO. (SINGLE UNIT ONLY)	MODEL NO. (FOR BULK PACK)	NO. OF GRILLES IN BULK PACK	DUCT DIAMETER AØ	B□	C	D	E
PGL100PK	PGL100	20	100	155	15	25	18
PGL125PK	PGL125	10	125	155	17	28	20
PGL150PK	PGL150	10	150	185	15	35	20

All dimensions in mm



Grille

Duct Spigot

ALUMINIUM EXTERNAL FIXED LOUVRE GRILLE



- Comes with a galvanised steel spigot that fits inside the wall cavity, leaving the front face to finish flush to the wall.
- Its rigidly-fixed horizontal blades are designed to reduce the possibility of rainwater entry.
- Vermin proof mesh is fitted to minimise the entry of debris.

MODEL NO.	DUCT DIAMETER AØ	B□	C	D	E	F
ELDA200	200	297	60	95	20	250
ELDA250	250	345	60	95	25	300

All dimensions in mm



EXTERNAL EAVE GRILLE

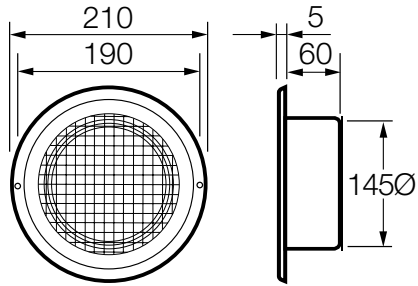
MADE TOUGH

316 GRADE STAINLESS STEEL



The Under Eave Vent EVSS is made from high quality 316 grade stainless steel, and has been designed for general air intake or exhaust applications. It is fitted with a sturdy wire mesh that prevents pests from entering.

- Flush mounting ideal for under-eave venting.
- Can be used for air intake or exhaust.
- Wire mesh face allows it to be used for wall or ceiling mounting also.
- Made from high quality 316 marine grade Stainless Steel.
- Cinder Mesh insert for compliance with Bushfire Attack Level BAL -40.
- Mounting gasket forms an air-tight seal.



Code: EVSS150



DOME VENT EXTERNAL GRILLE

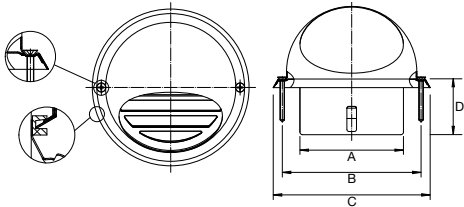
MADE TOUGH

304 GRADE STAINLESS STEEL



The stainless steel Dome Vent is designed for external wall mounting. It is suitable for areas with harsh weather and the mesh screen prevents pests and insects from entering.

- Ideal for extreme weather conditions.
- High quality 304 stainless steel.
- Includes mounting gasket for an air tight seal.
- Cinder mesh with a 2mm aperture to comply with Bushfire Attack Level BAL-40.



MODEL NO.	DUCT DIAMETER AØ	B	C	D
EDVSS100	100	130	147	50
EDVSS125	125	165	187	50
EDVSS150	150	189	210	60

All dimensions in mm



HOOD VENT EXTERNAL GRILLE

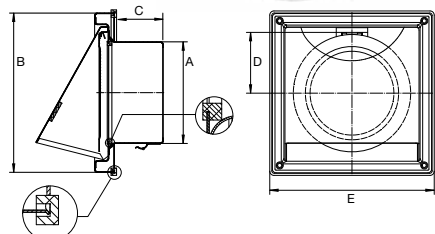
MADE TOUGH

304 GRADE STAINLESS STEEL



The Hood Vent is made from high quality 304 stainless steel and has a gravity backdraft shutter that prevents cold air flowing back into the room. The valve body is equipped with a mounting gasket that forms an air tight seal.

- Ideal for extreme weather conditions.
- Includes gravity backdraft shutter.
- Cinder mesh with a 2mm aperture to comply with Bushfire Attack Level BAL-40.



MODEL NO.	DUCT DIAMETER AØ	B	C	D	E
EHVSS100	100	156	50	58	156
EHVSS125	125	180	50	66	184
EHVSS150	150	181	60	78	184

All dimensions in mm




Designed to fit directly onto the EDM-300C wall mounted fan in narrow wall panel applications.

Fan and grille combination designed to be installed into wall panels from 45 to 130mm wide.

SLIMFIT

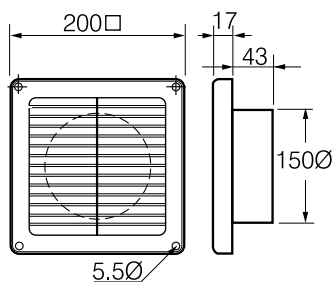
EXTERNAL GRILLE AND SPACER PLATE



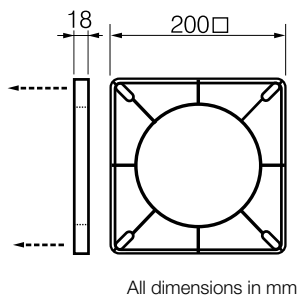
The Slimfit Grille and Spacer Plate have been specifically designed to fit directly onto the spigot of an EDM-300C fan.

- Spacer Plate can be mounted on exterior or interior wall.
- Made from UV-stabilised ABS Plastic.
- Comes with flywire mesh sheet to eliminate entry of insects.
- Grille can also be used with thicker walls or ducted applications using wall tube or flex duct.
- Available with 150mm spigot only.

Slimfit Louvre Grille (Model No: DPL150)



Spacer Plate (Model No: DPS150)



INSTALLATION DATA

Can be installed into 45 to 130mm thick narrow wall panel applications such as mining accommodation huts, portable homes and site offices.

